

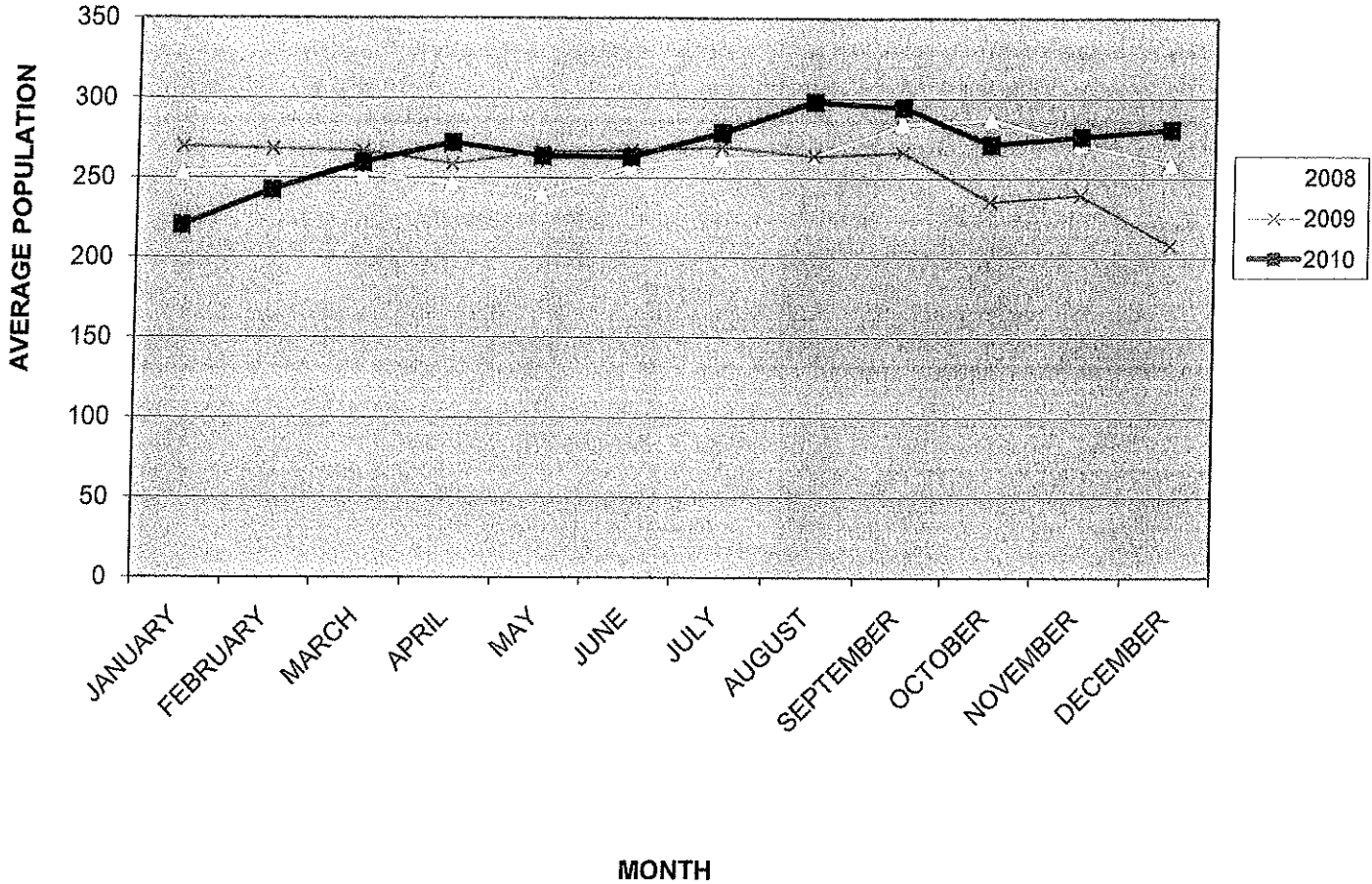
Scott County Board of Supervisors
 FY11 Revenue Update
 as of January 15, 2011

	Gaming Revenue Of Capri	Gaming Revenue Rhythm City	Total Gaming Revenue	Recorder Revenue	Road Use Tax	Local Option Sales Tax	Interest Income (a)	Building Permits	Sheriff Revenue (charges for service)
FY09 Actual	\$ 455,173	\$ 293,747	\$ 748,920	\$ 1,154,872	\$ 2,230,212	\$ 3,691,392	\$ 677,558	\$ 180,441	\$ 891,134
FY10 Actual	\$ 398,550	\$ 277,705	\$ 676,255	\$ 1,131,048	\$ 2,881,248	\$ 3,637,825	\$ 160,348	\$ 144,490	\$ 687,387
FY11 Budget	\$ 337,500	\$ 287,500	\$ 625,000	\$ 1,209,530	\$ 2,792,526	\$ 3,500,000	\$ 150,000	\$ 165,000	\$ 857,300
FY11 YTD \$\$	\$ 179,214	\$ 111,518	\$ 290,732	\$ 702,450	\$ 983,842	\$ 1,600,068	\$ 109,217	\$ 92,671	\$ 407,171
FY11 YTD %	53.10%	38.79%	46.52%	58.98%	35.23%	45.72%	72.81%	56.16%	47.49%
Annualized %	53.33%	53.33%	53.33%	52.50%	33%	42%	41.667%	52.50%	42%
Over/(Under) Budget % YTD	-0.23%	-14.54%	-6.82%	5.58%	1.90%	4.95%	31.145%	3.664%	5.828%
Over/(Under) Budget \$\$ YTD	\$ (785.56)	\$ (41,815.33)	\$ (42,600.89)	\$ 67,446.75	\$ 53,000.24	\$ 141,734.68	\$ 46,717.00	\$ 6,046.25	\$ 49,962.17

(e) General Fund interest income overstated due to the influx of cash related to bond proceeds. A portion of this interest will be allocated back to these large capital projects at the end of the year.

Scott County Jail Population Trend

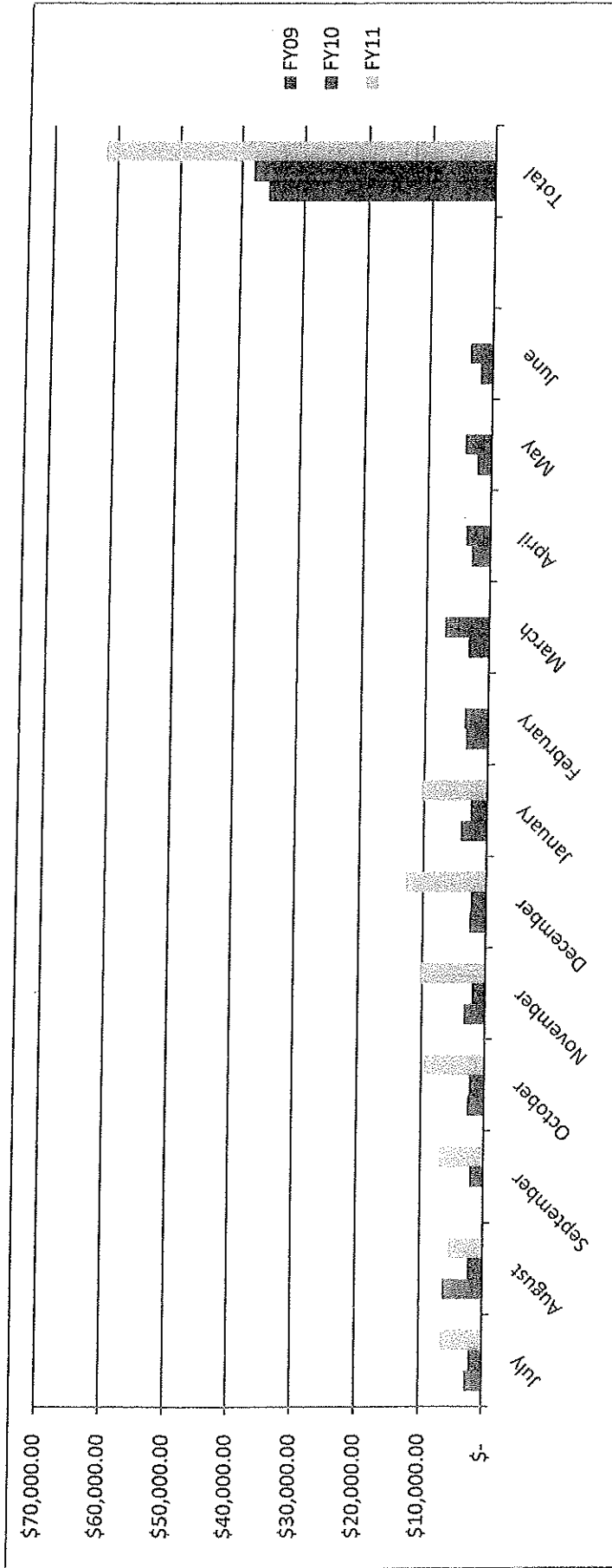
1/18/2011



AVERAGE DAILY POPULATION BY MONTH

	2008	2009	2010
JANUARY	253.2	269.7	219.9
FEBRUARY	255.5	268.3	242.3
MARCH	252.1	266.9	259.3
APRIL	246.1	258.9	271.8
MAY	239.4	266.4	263.3
JUNE	256.9	267.2	263
JULY	262.2	269.4	278.2
AUGUST	263.5	264	297.6
SEPTEMBER	283.8	266.2	294.1
OCTOBER	286.7	235.8	270.9
NOVEMBER	271.3	239.7	275.8
DECEMBER	258.8	208.4	280.3

Scott County Attorney
Delinquent Fine Collection Program



	FY09	FY10	FY11
July	\$ 2,784.02	\$ 2,132.92	\$ 6,550.33
August	\$ 6,309.62	\$ 2,316.19	\$ 5,352.24
September	\$ 30.00	\$ 2,099.12	\$ 6,966.24
October	\$ 2,615.55	\$ 2,348.37	\$ 9,502.87
November	\$ 3,338.28	\$ 2,047.71	\$ 10,350.90
December	\$ 2,590.01	\$ 2,397.08	\$ 12,723.30
January	\$ 4,129.81	\$ 2,534.14	\$ 10,398.14
February	\$ 3,444.42	\$ 3,718.54	
March	\$ 3,289.34	\$ 6,952.94	
April	\$ 2,959.29	\$ 3,838.47	
May	\$ 2,228.81	\$ 4,186.13	
June	\$ 1,961.66	\$ 3,548.53	
Total	\$ 35,680.81	\$ 38,120.14	\$ 61,844.02

