

SCOTT COUNTY ENGINEER'S OFFICE

500 West Fourth Street
Davenport, Iowa 52801-1106

(563) 326-8640
FAX – (563) 326-8257
E-MAIL - engineer@scottcountyiowa.com
WEB SITE - www.scottcountyiowa.com



JON R. BURGSTRUM, P.E.
County Engineer

ANGIE KERSTEN
Assistant County Engineer

BECKY WILKISON
Administrative Assistant

MEMO

TO: Dee Bruemmer
County Administrator

FROM: Jon Burgstrum
County Engineer

SUBJ: First reading of ordinance for establishing two new yield signs on county road.

DATE: September 26, 2013

First reading of an ordinance to establish two yield signs in Parkview.

- a) From the West entrance at the intersection of Park Avenue Court and Park Lane Circle.
- b) From the East entrance at the intersection of Park Avenue South and Park Lane Circle.

The Parkview Homeowners Board requested that we place stop signs at this location. My response was that we would do a traffic study to determine if stop signs were warranted. We looked at Traffic volume, Speed limits, and sight distance which are the major factors in determining justification for regulatory signs. We also did a “live” observation during the peak times to determine turning patterns and peak volumes. Our study showed that the warrants for stop signs were not met but the location did meet warrants for yield signs. The primary focus here is to create a safer environment at this location. Yield signs should adequately alert the driver to slow down and watch for oncoming traffic.

SCOTT COUNTY ORDINANCE NO. 13-_____

AN ORDINANCE TO ADD CHAPTER 13, SEC. 13-47-B(3), PARKVIEW OF THE SCOTT COUNTY CODE RELATIVE TO PLACEMENT OF TWO YIELD SIGNS ON SCOTT COUNTY SECONDARY ROADS.

BE IT ENACTED BY THE BOARD OF SUPERVISORS OF SCOTT COUNTY, IOWA:

SECTION 1.

Under Sec. 13-47-B, add Item No. 3. Parkview to read:

- a. From the West entrance at the intersection of Park Avenue Court and Park Lane Circle.
- b. From the East entrance at the intersection of Park Avenue South and Park Lane Circle.

SECTION 2.

The County Auditor is directed to keep and maintain a copy of the Ordinance in the County Auditor's office.

SECTION 3. SEVERABILITY CLAUSE

If any of the provisions of the Ordinance are for any reason illegal or void, then the lawful provisions of this Ordinance shall be and remain in full force and effect, the same as if the Ordinance contained no illegal or void provisions.

SECTION 4. REPEALER

All Ordinances or parts of Ordinances in conflict with the provisions of this Ordinance are hereby repealed.

SECTION 5. EFFECTIVE DATE

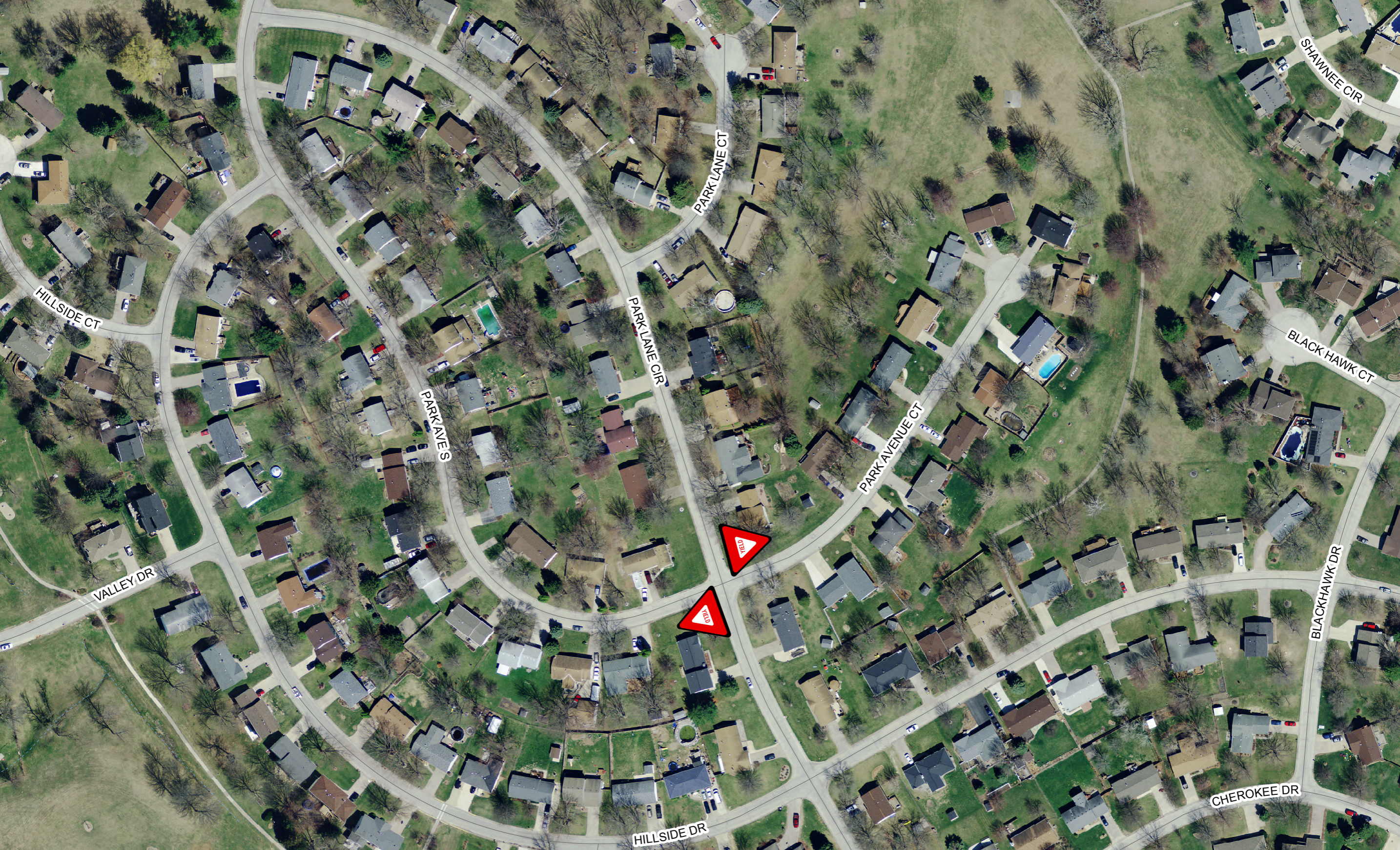
This Ordinance shall be in full force and effect after its final passage and publication as by law provided.

APPROVED this _____ day of _____, 2013.

Larry Minard, Chairperson
Scott County Board of Supervisors

ATTESTED BY:

Roxanna Moritz
Scott County Auditor



SHAWNEE CIR

PARK LANE CT

HILLSIDE CT

BLACK HAWK CT

PARK LANE CIR

PARK AVE S

PARK AVENUE CT

YIELD

VALLEY DR

BLACK HAWK DR

STOP

CHEROKEE DR

HILLSIDE DR