

Facility and Support Services

600 West 4th Street

Davenport, Iowa 52801-1003

fss @ scottcountyiowa.com

(563) 326-8738 Voice (563) 328-3245 Fax



July 5, 2016

To: Mahesh Sharma
Scott County Administrator

From: Tammy Speidel, Director
Facility and Support Services

Subj: Sheriff Patrol Headquarters- Approve of Change Order #1

During excavation at the Patrol Headquarters site, poor soil conditions were discovered. Working with Wold Architects, TEAM Services, the company performing the testing and Verbeke-Meyer, the civil engineering firm, we identified the impacted areas that needed to be over excavated and have stabilizing rock brought in for remediation.

During the construction bid process we included bids for unit prices in anticipation of the potential need for this type of work.

Change Order #1 has been received and contains only this item, in the amount of \$45,176.07 and will be paid from the project contingency.

Work was previously verbally authorized to allow work to continue.

I will be available at the next Committee of the Whole meeting to answer any questions you or the Board may have.

CC: FSS Management Team

AVENUE

APPROACH ACCORDING TO CITY SPECIFICATIONS (7" PCC)

CONCRETE W/ 4" ROLLOVER CURB

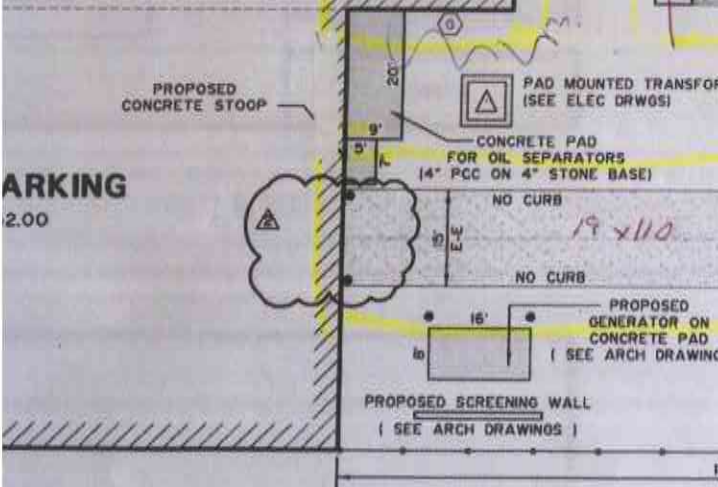
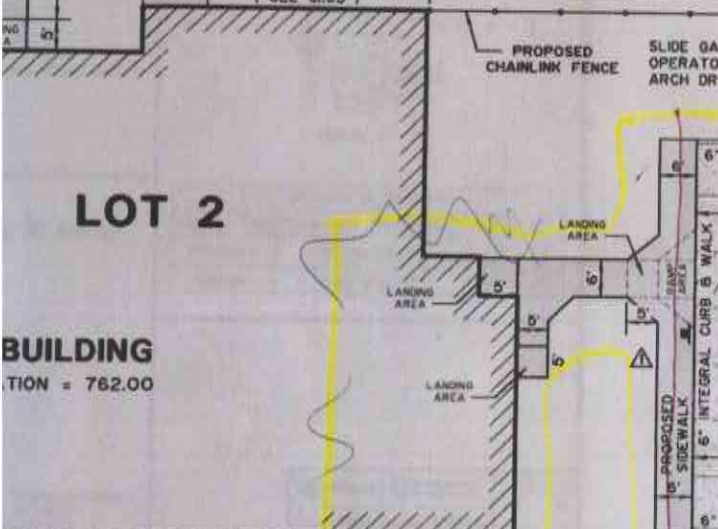
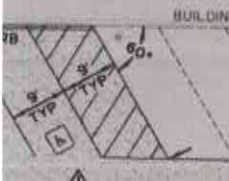
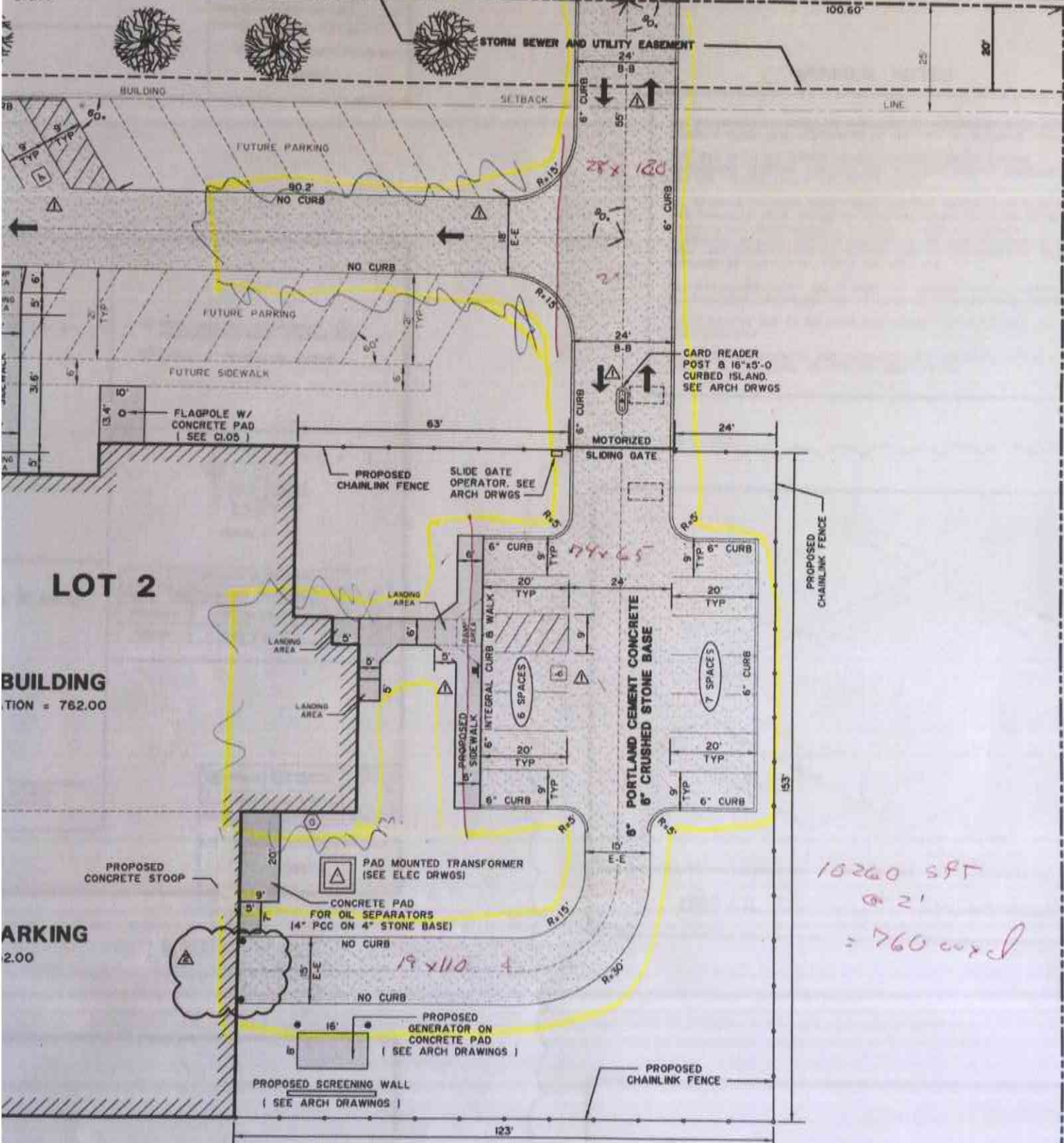
504.30'

PROPOSED SIDEWALK

PROPOSED SIDEWALK

290.00'

100.60'



LOT 2

BUILDING

ION = 762.00

PARKING

2.00

*10260 SFT
@ 2'
= 760 curbs*

S.61-05-38"W. - 314.71'

May 20, 2015



Wold Architects & Engineers
110 N Broadway Street Suite # 220
Palatine, IL 60067

Attn: Kirsta Ehmke

Re: Proofroll Inspection
Scott County Sheriff's Patrol HQ (Owner)
Eldridge, Iowa
TEAM No. 16-1143.001

Dear Ms. Ehmke:

TEAM Services observed proofrolling at the above project on May 16 and 19, 2016. Proofrolling was performed on the entire building and paving areas. Soils observed generally consisted of brown and gray silt. Please refer to the attached sketch for approximate test locations.

Proofrolling runs were staggered by full truck widths and were performed with a loaded tandem axle truck. The May 16, 2016 inspection was performed on the north half of the property. Minimal rutting and pumping were observed in this area and it was determined that the subgrade soils were suitable for their intended use at the time of our inspection.


The May 19, 2016 inspection was performed on the south half of the property. It was observed that the upper 12 to 18 inches of surface soils in a 130 foot by 240 foot area were soft and saturated due to surface water and/or groundwater. Rutting of 3 to 12 inches was noted during proofrolling in these areas. Therefore, we recommend that the softened soils should be removed and replaced with engineered compacted and tested fill meeting the project specifications. If water seepage is encountered during overexcavation, clean crushed rock may be required for the first lift of fill to provide a stable base for placement and compaction of additional fill. Additional crushed rock, possibly up to 18 inches, may be required in areas where heavy construction traffic is anticipated. Further, depending on the amount of construction traffic on the crushed rock following placement, a geotextile fabric may be required to prevent migration of the silty soils into the clean granular materials.

Scott County Sheriff's Patrol HQ
Eldridge, Iowa
TEAM No. 16-1143.001
May 20, 2016



We appreciate the opportunity to be of service to you on this project. Should you have any questions regarding this document, or if we can be of assistance to you in another matter, please do not hesitate to contact us.

Sincerely,
TEAM Services

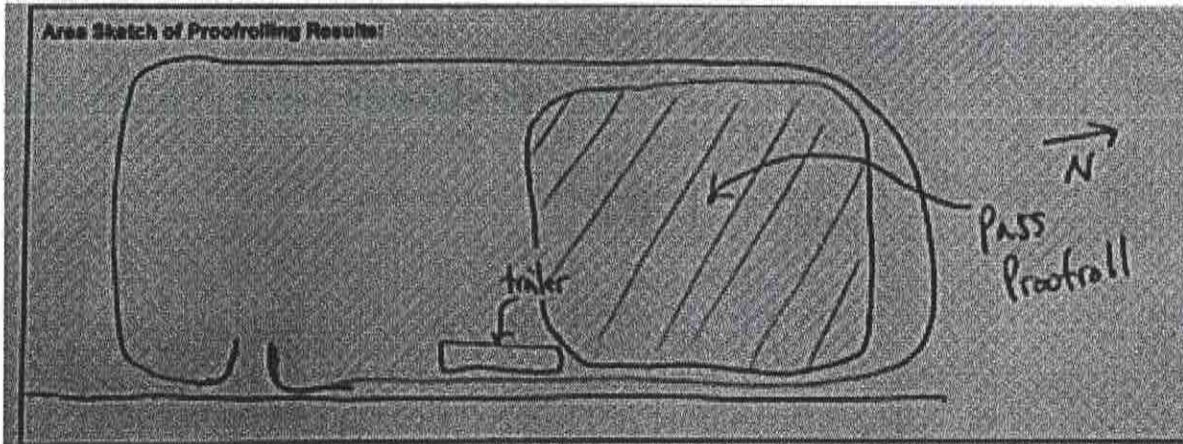

Nicholas Gilles, P.E.
Iowa No. 21385



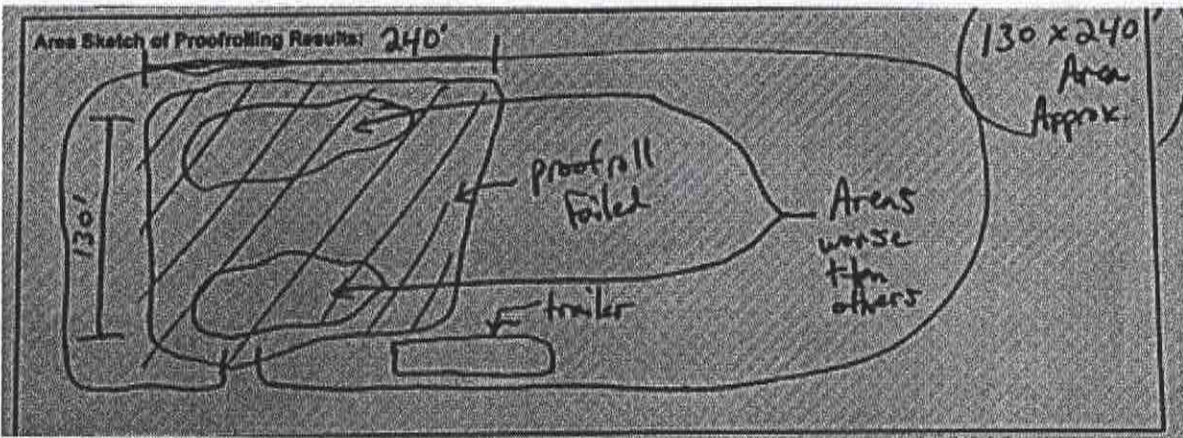
Engineering Technician: Nick McClean

CC: Michael Hunt, Tom Pins – Conlon Construction Company, Inc.

Sketch of Area Inspected – 5/16/16



Sketch of Area Inspected – 5/19/16



THE COUNTY AUDITOR'S SIGNATURE CERTIFIES
THAT THIS RESOLUTION HAS BEEN FORMALLY
APPROVED BY THE BOARD OF SUPERVISORS ON

DATE

SCOTT COUNTY AUDITOR

R E S O L U T I O N

SCOTT COUNTY BOARD OF SUPERVISORS

July 14, 2016

A RESOLUTION APPROVING SHERIFF PATROL HEADQUARTERS CHANGE ORDER
#1 IN THE AMOUNT OF \$45,176.07.

BE IT RESOLVED BY the Scott County Board of Supervisors as follows:

- Section 1. Change Order #1 in the amount of \$45,176.07 is hereby approved.
- Section 2. That the Director of Facility & Support Services is authorized to sign Sheriff Patrol Headquarters Change Order #1.
- Section 3. This resolution shall take effect immediately.