

Facility and Support Services

600 West 4th Street

Davenport, Iowa 52801-1003

fss @ scottcountyiowa.com

(563) 326-8738 Voice (563) 328-3245 Fax



Item #10

10/31/17

October 24, 2017

To: Mahesh Sharma
County Administrator

From: Tammy Speidel, Director
Facility and Support Services

Subj: Approval of Purchase-Exterior Campus Signage

With the completion of the Campus Walkway Project, I have received pricing for exterior signage for the downtown campus location. This pricing includes:

- five large "monument" type signs
- three staff only signs for staff entrances, to try and stop the public before they head up the sidewalk to those staff only doors
- four campus parking signs, two for each of the fifth street parking lots
- shipping

I obtained pricing directly from Takeform as this signage is from the same line that has been used on all interior signage at the Courthouse, new Sheriff Patrol, the Administrative Center, new Juvenile Detention Center space, and one exterior sign already in place on the campus.

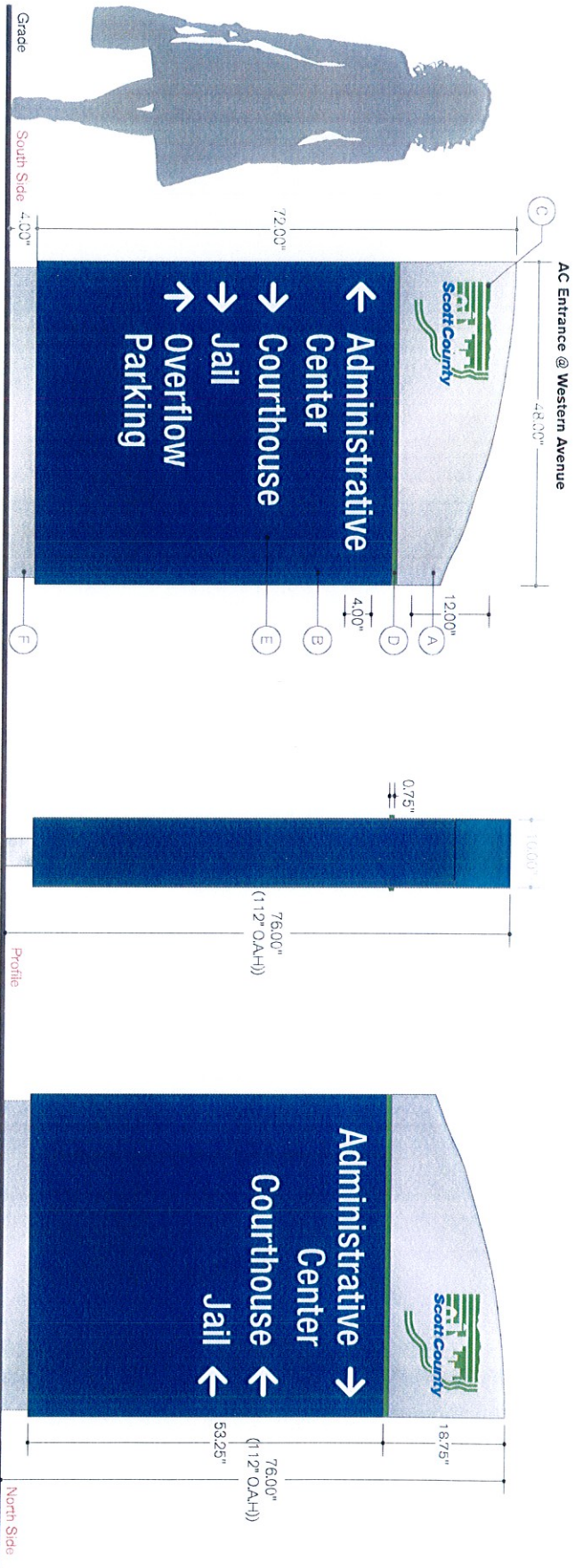
The quote for signage and shipping is \$18,895.07. They had quoted an additional \$17,000.00 for installation. FSS staff has worked with this product previously on both interior and exterior installations and believe that they are capable of the installation. Therefore I am recommending we perform the install with FSS staff, saving the \$17,000.00 labor expense.

We had budgeted \$45,000.00 in the current FY for this project. This is within the budgeted amount and I recommend approving this purchase.

I plan to be at the next Committee of the Whole meeting to answer any questions you or the Board may have.

CC: FSS Management Team

Type 1
 SO4PC-48-72
 Double Sided, Non-Illuminated
 Post and Cabinet
 Panel Count: Side A (2), Side B (2)
 Direct Bury
 36" Minimum Post Embedment
QTY: 5



Messages oriented with tall side of sign toward the building.

takeform
 EXTERIOR SIGNAGE
Signify

11001 Maple Ridge Rd, Mechanicsville, MO 63050
 P 503.526.1390 F 563.796.0889
 www.takeform.net

Project: Scott County Campus
 Exterior Wayfinding

Date: 09.25.17
 Drawn By: JB

Filename: SC000002_158631_EXT_Rev2

Revisions:
 10.04.17 JB
 10.17.17 JB

Signify 04

Scale: 3/4" = 1'-0"

Notes:
 Site Survey Required

- Header Panel**
 - A Painted .125 Aluminum CO601 Satin Silver
- Directional Panel**
 - B Painted .125 Aluminum MP02758 Regalia Blue
- Accent Bar**
 - D Painted .50" Aluminum AkzoNobel SIGN3328
- Copy**
 - E First Surface Applied Vinyl Font: Helvetica Medium Condensed 220-10
- Logo**
 - C First Surface Applied Vinyl Logo: Customer Supplied Artwork printed to match PMS 355 C / 220-47 Intense Blue
- Post**
 - F Painted 4" Aluminum Square Tube w/ .080 Aluminum Cladding CO601 Satin Silver

Product Approval
 no changes

Approved By: _____
 Date: _____
 WITH CHANGES AS NOTED

Approved By: _____
 Date: _____

Type 1 - Message Schedule
CH Entrance @ Western Avenue



North Side

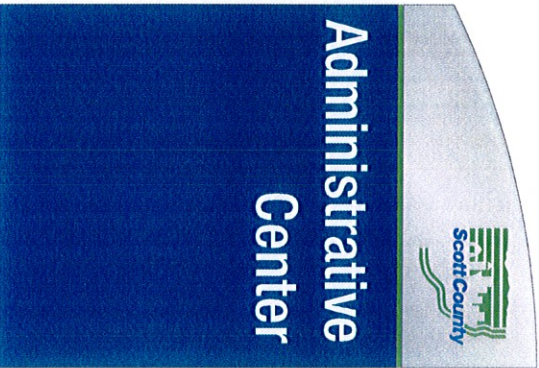


South Side



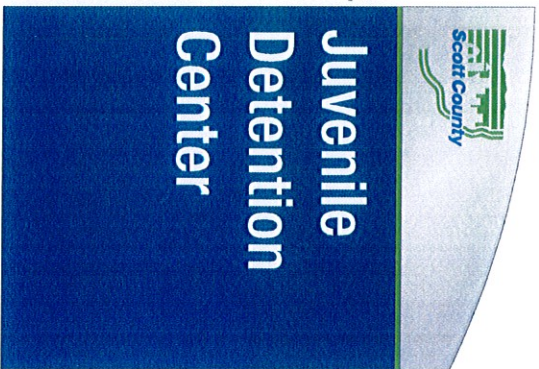
AC Entrance @ Gains Street

North Side

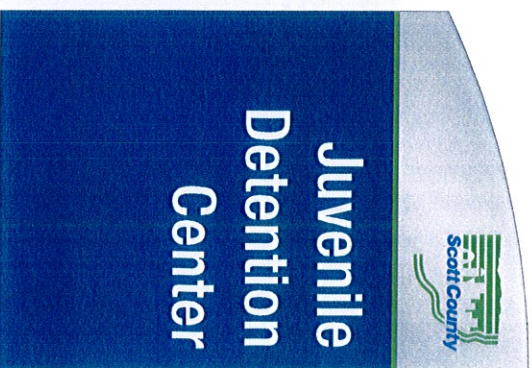


South Side

4th Street @ Annex



West Side



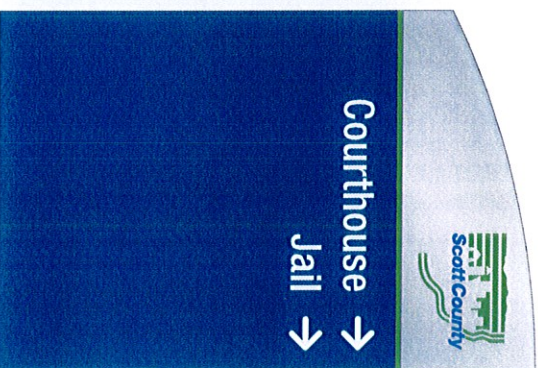
East Side

Messages oriented with tall side of sign toward the building.



4th Street @ Flagpole

West Side



East Side

takeform
11031 Maple Ridge Road, Macchartery, Midlothian
P 508 578 1390 F 505 790 0889
www.takeform.net

Signify
EXTERIOR SIGNAGE

Project:
Scott County Campus
Exterior Wayfinding

Date: 09.25.17
Drawn By: JB

Filename:
SC000002_158631_EXT_Rev2

Revisions:
10.04.17 JB
10.17.17 JB

Signify 04

Scale:
3/4" = 1'-0"

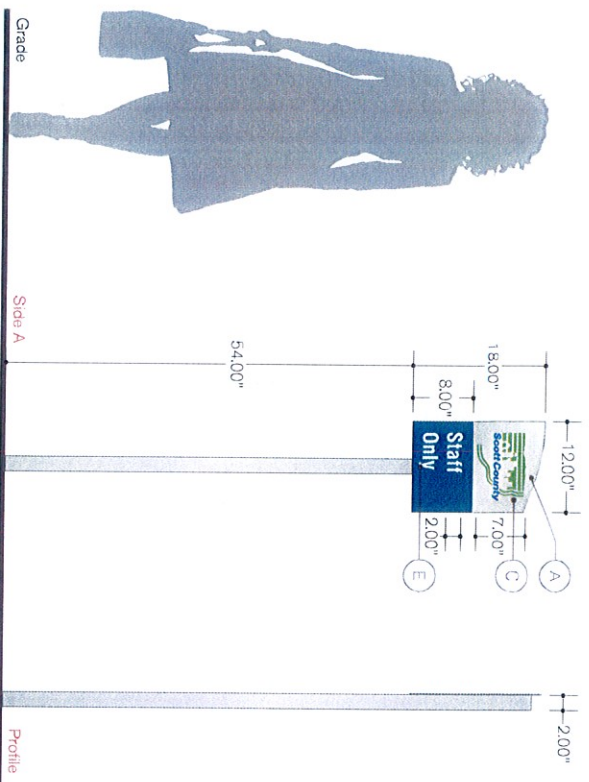
Notes:

Site Survey Required
Refer to page 1 of 4 for fabrication details.

Product Approval	
NO CHANGES	
Approved By: _____	Date: _____
WITH CHANGES AS NOTED	
Approved By: _____	Date: _____

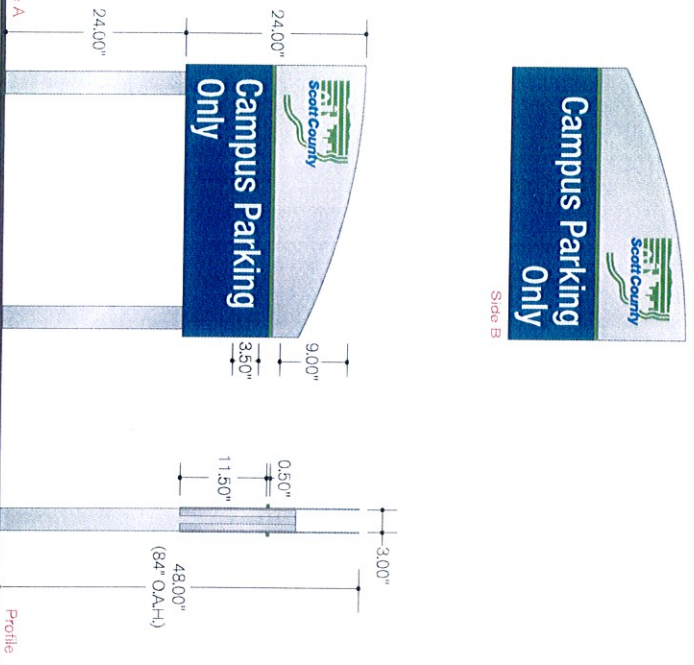
Product will be manufactured as indicated on this document. Please review carefully.

Type 3
 S04P-12-18
 Single Sided Post and Panel
 Direct Bury
 36" Minimum Post Embedment
QTY: 3



- Face Panel**
- A** Painted .125 Aluminum
CO601 Satin Silver / MP02758 Regalia Blue
 - Not Used
- Logo**
- C** First Surface Applied Vinyl
Logo: Customer Supplied Artwork
printed to match PMS 355 C / 220-47 Intense Blue
 - Not Used

Type 4
 S04P-36-24
 Double Sided Post and Panel
 Direct Bury
 36" Minimum Post Embedment
QTY: 4



- Not Used**
- D** Painted .50" Aluminum
AkzoNobel SIGN3328
- Copy**
- E** First Surface Applied Vinyl
Font: Helvetica Bold Condensed
220-10 White
- Post**
- F** Painted 2" / 3" Aluminum Square Tube
CO601 Satin Silver

takeform
 1101 Maple Ridge Rd., Lincoln, NE 68503
 P: 402.526.1396 F: 402.792.2859
 www.takeform.net

Signify
 EXTERIOR SIGNAGE

Project: Scott County Campus
 Exterior Wayfinding
Date: 09.25.17
Drawn By: J/B
Filename: SC00002_158631_EXT_Rev2

Revisions:
 10.04.17 J/B
 10.17.17 J/B

Signify 04

Scale:
 3/4" = 1'-0"

Notes:
 Site Survey Required

Product Approval

NO CHANGES	Approved By: _____
WITH CHANGES AS NOTED	Date: _____
	Approved By: _____
	Date: _____

THE COUNTY AUDITOR'S SIGNATURE CERTIFIES
THAT THIS RESOLUTION HAS BEEN FORMALLY
APPROVED BY THE BOARD OF SUPERVISORS ON

DATE

SCOTT COUNTY AUDITOR

R E S O L U T I O N

SCOTT COUNTY BOARD OF SUPERVISORS

November 2, 2017

A RESOLUTION APPROVING THE QUOTE FOR EXTERIOR CAMPUS SIGNAGE
FROM TAKEFORM IN THE AMOUNT OF \$18,895.07.

BE IT RESOLVED BY the Scott County Board of Supervisors as follows:

- Section 1. That the quote for exterior campus signage is hereby approved and awarded to Takeform in the amount of \$18,895.07.

- Section 2. This resolution shall take effect immediately.