

SCOTT COUNTY ENGINEER'S OFFICE

950 E Blackhawk Trail
Eldridge, Iowa 52848

(563) 326-8640
FAX – (563) 328-4173
E-MAIL - engineer@scottcountyiowa.com
WEB SITE - www.scottcountyiowa.com



JON R. BURGSTRUM, P.E.
County Engineer

ANGIE KERSTEN
Assistant County Engineer

TARA YOUNGERS
Administrative Assistant

MEMO

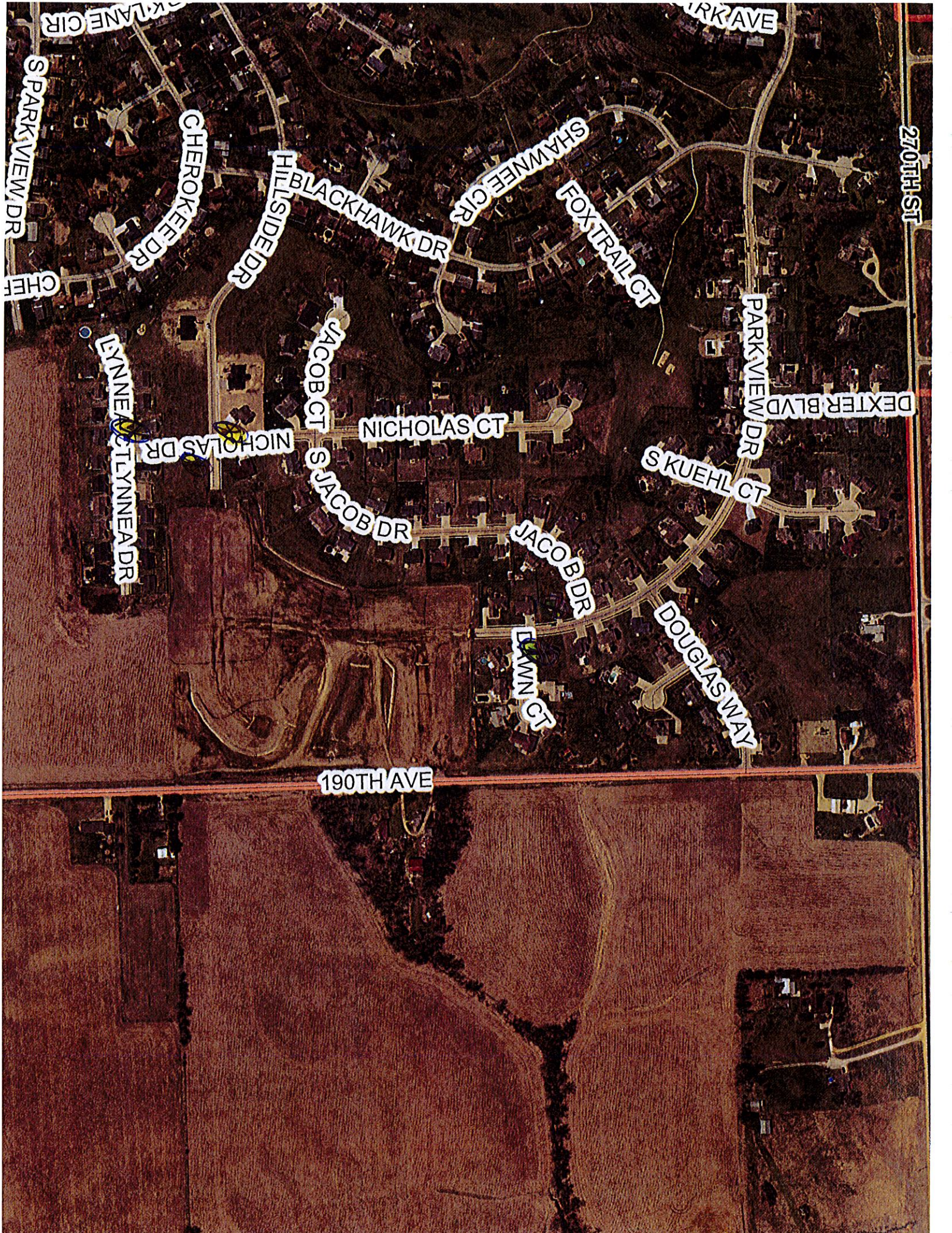
TO: Mahesh Sharma
County Administrator

FROM: Jon Burgstrum
County Engineer

SUBJ: First Reading placing stop signs in Park View

DATE: December 14, 2017

With the addition of Dexter's 7th to Park View, there are 0.453 mi of streets that have been added to our system. The new streets create three new intersections and also creates stopping situations at two other locations. We have evaluated the intersections and in order to allow the public to safely travel through this new area, we feel that nine new stop signs should be placed. Stop sign locations are shown on the attached aerial photo and plat of the area.



270TH ST

URK AVE

SPARKLANE CIR

SPARK VIEW DR

CHEROKEE DR

HILLSIDE DR

BLACKHAWK DR

SHAWNEE CIR

FOX TRAIL CT

PARK VIEW DR

DEXTER BLVD

NICHOLAS CT

JACOB CT

LYNNEA DR

NICHOLAS DR

JACOB DR

SKUEHL CT

JACO B DR

DOUGLAS WAY

LAWN CT

190TH AVE

DEXTER ACRES SEVENTH ADDITION

FINAL PLAT OF
TO SCOTT COUNTY, IOWA
BEING PART OF THE NORTHEAST QUARTER OF SECTION 31
TOWNSHIP 50 NORTH, RANGE 4 EAST OF THE 5TH PA. 1

OWNER	ADDRESS	AREA	ACRES	REMARKS
1
2
3
4
5
6
7
8
9
10
11
12
13
14
15
16
17
18
19
20
21
22
23
24
25
26
27
28
29
30
31
32
33
34

GENERAL NOTES

1. ALL DIMENSIONS ARE IN FEET AND DECIMAL PARTS THEREOF.

2. ALL DIMENSIONS SHOWN ARE IN FEET AND DECIMAL PARTS THEREOF.

3. THE SURVEY WAS MADE BY THE SURVEYOR IN ACCORDANCE WITH THE

4. ALL DIMENSIONS ARE IN ACCORDANCE WITH THE

5. THE SURVEY WAS MADE BY THE SURVEYOR IN ACCORDANCE WITH THE

6. THE SURVEY WAS MADE BY THE SURVEYOR IN ACCORDANCE WITH THE

7. THE SURVEY WAS MADE BY THE SURVEYOR IN ACCORDANCE WITH THE

8. THE SURVEY WAS MADE BY THE SURVEYOR IN ACCORDANCE WITH THE

9. THE SURVEY WAS MADE BY THE SURVEYOR IN ACCORDANCE WITH THE

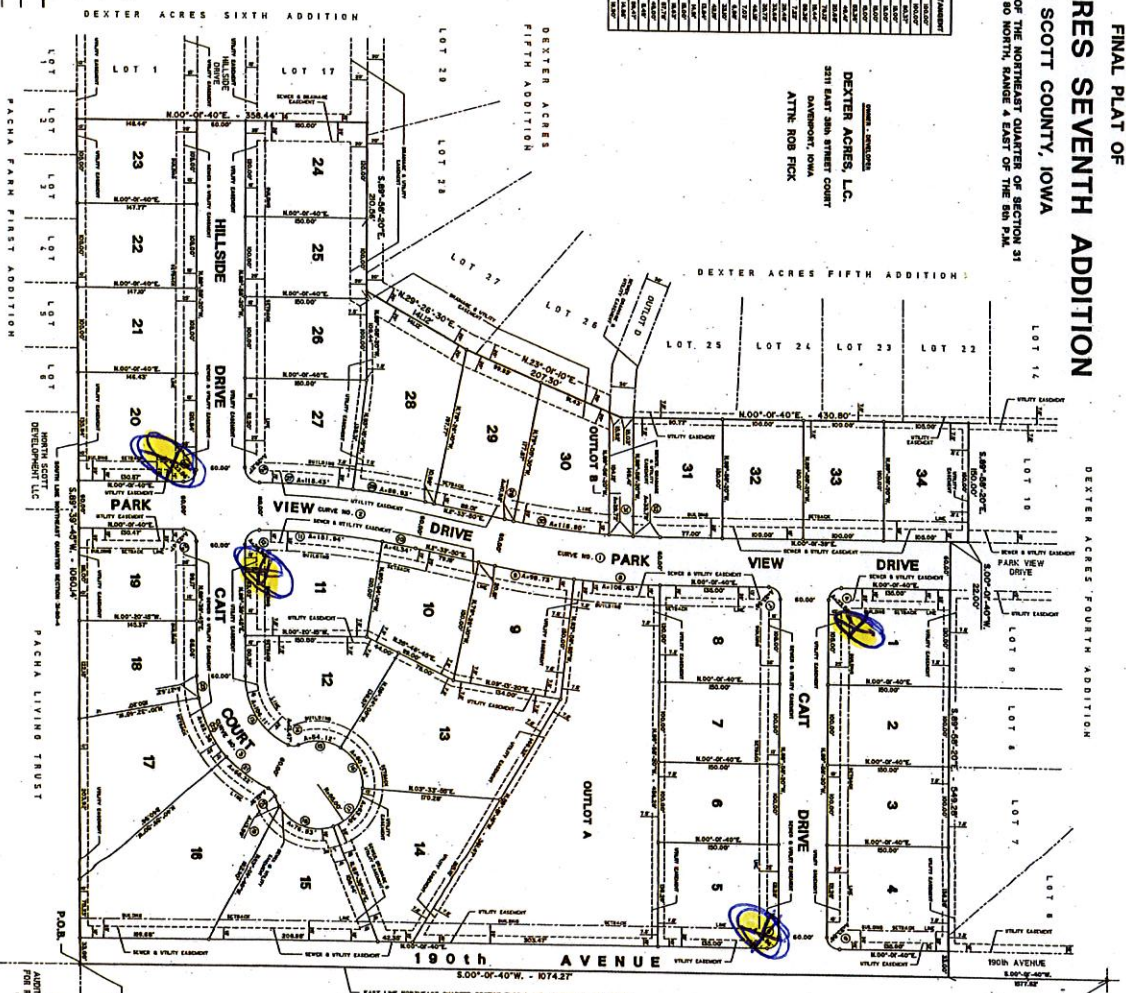
10. THE SURVEY WAS MADE BY THE SURVEYOR IN ACCORDANCE WITH THE

MEDACOM
CENTRAL SCOTT TELEPHONE

MEDAMERICAN ENERGY COMPANY
ALLIANT ENERGY

VERBERG - MEYER
CONSULTING ENGINEERS, P.C.

1000 UNIVERSITY AVENUE, SUITE 100
DES MOINES, IOWA 50319
PHONE: 563-281-1111
FAX: 563-281-1112



LOT	AREA	ACRES
1
2
3
4
5
6
7
8
9
10
11
12
13
14
15
16
17
18
19
20
21
22
23
24
25
26
27
28
29
30
31
32
33
34

VERBERG - MEYER
CONSULTING ENGINEERS, P.C.

1000 UNIVERSITY AVENUE, SUITE 100
DES MOINES, IOWA 50319
PHONE: 563-281-1111
FAX: 563-281-1112

SCOTT COUNTY ORDINANCE NO 17-_____

AN ORDINANCE TO AMEND CHAPTER 13, SEC. 13-47A-10m through 10t OF THE SCOTT COUNTY CODE RELATIVE TO PLACEMENT OF STOP SIGNS ON SCOTT COUNTY SECONDARY ROADS.

BE IT ENACTED BY THE BOARD OF SUPERVISORS OF SCOTT COUNTY, IOWA:

SECTION 1.

Under Sec. 13-47A-10m - to read: From the North and South Entrance of Nicholas Drive and Hillside Drive intersection.

Under Sec. 13-47A-10n - to read: From the North Entrance of Nicholas Drive and Lynnea Drive intersection.

Under Sec. 13-47A-10o - to read: From the East Entrance of Cait Court and East Park View Drive intersection.

Under Sec. 13-47A-10p - to read: From the West Entrance of Hillside Drive and East Park View Drive intersection.

Under Sec. 13-47A-10q - to read: From the East Entrance of Cait Drive and East Park View Drive intersection.

Under Sec. 13-47A-10r - to read: From the West Entrance of Cait Drive and 190th Avenue intersection.

Under Sec. 13-47A-10s - to read: From the East Entrance of Dawn Court and East Park View Drive intersection.

Under Sec. 13-47A-10t - to read: From the West Entrance of Jacob Drive and East Park View Drive intersection.

SECTION 2.

The County Auditor is directed to keep and maintain a copy of the Ordinance in the County Auditor's office.

SECTION 3. SEVERABILITY CLAUSE

If any of the provisions of the Ordinance are for any reason illegal or void, then the lawful provisions of this Ordinance shall be and remain in full force and effect, the same as if the Ordinance contained no illegal or void provisions.

SECTION 4. REPEALER

All Ordinances or parts of Ordinances in conflict with the provisions of this Ordinance are hereby repealed.

SECTION 5. EFFECTIVE DATE

This Ordinance shall be in full force and effect after its

final passage and publication as by law provided.

APPROVED this _____ day of _____, 2017.

Carol Earnhardt, Chairperson
Scott County Board of Supervisors

ATTESTED BY:

Roxanna Moritz
Scott County Auditor