



JDC AND JAIL NEEDS ASSESSMENT



Board Presentation

June 25, 2019



- Study Objectives
- Process and Participants
- JDC – Staffing and Space Needs
- Jail – Staffing and Space Needs
- Facility Options
- Recommendations ?????



JDC/Jail Assessment

STUDY OBJECTIVES

- How can each Scott County Jail & Juvenile Detention Centers be responsive and cost effective?
- How big should the spaces be?
- How much future expansion should be anticipated and when will it be needed?
- How much future expansion should be built-in vs. added?
- How will emerging technology impact infrastructure needs?
- How will emerging management structures impact space needs?
- How much should be budgeted for today? For tomorrow?



JDC/Jail Assessment PROCESS AND PARTICIPANTS

Core Planning Group Participants

Jeremy Kaiser	Juvenile Detention Center
Sheriff Tim Lane	Sheriff's Office
Major Shawn Roth	Sheriff's Office
Major Bryce Schmidt	Sheriff's Office - Jai- Jail
Mary Thee	Assistant County I
Captain Stefanie Bush	Sheriff's Office Administrator
David Farmer	Budget and Administrative Services
Tammy Speidel	Facility and Support Services

task 1 establish project foundation

task 2 conduct initial meetings/interviews

task 3 collect & analyze data

task 4 project detention housing capacity

task 5 analyze existing facilities condition

task 6 space requirements and standards

task 7 develop options- analyze capital and operational cost implications

task 8 share recommendations to board, stake holders & community

ACHIEVABLE SOLUTION



JDC/Jail Assessment

JDC

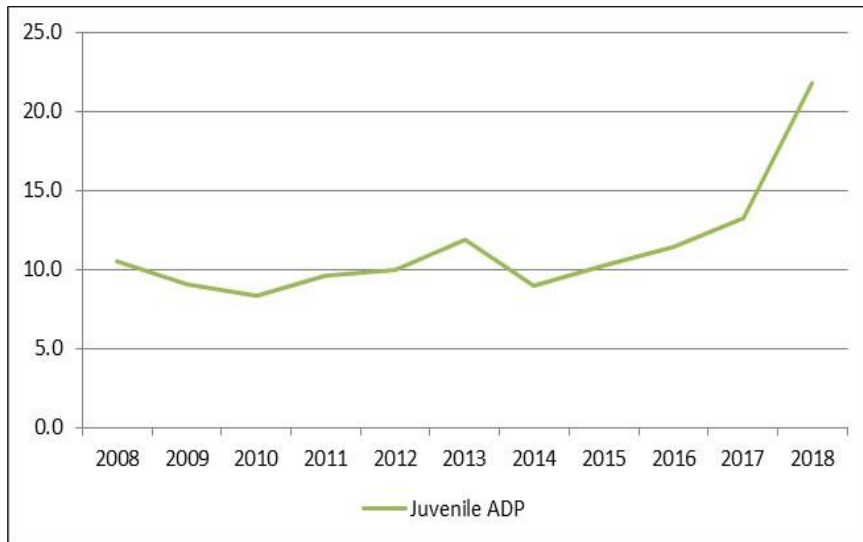




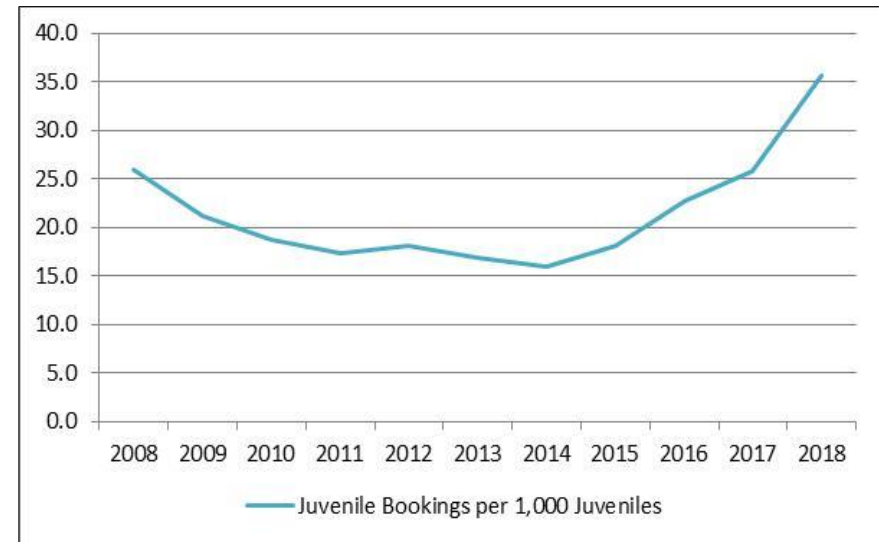
JDC/Jail Assessment

JDC HISTORY & PROJECTIONS

Scott County Juvenile ADP (Including Out of County Placements)



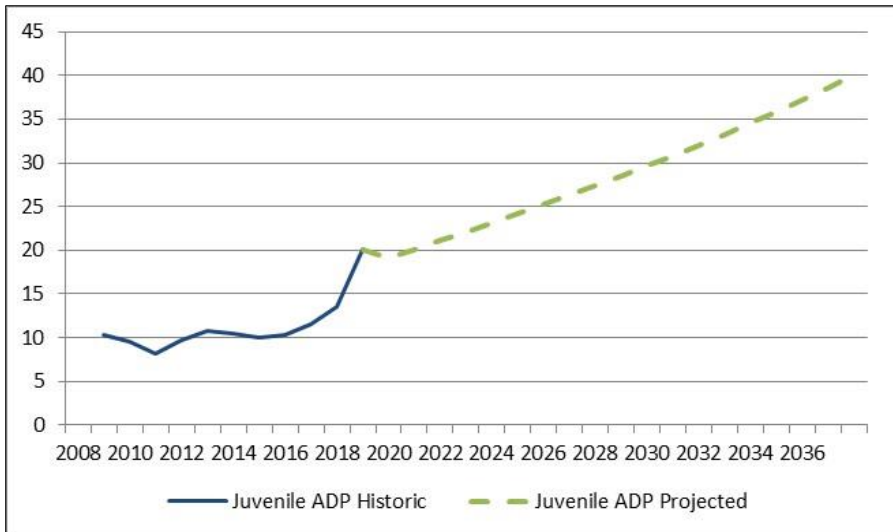
Scott County Juvenile Bookings (Per 1,000 Juveniles)



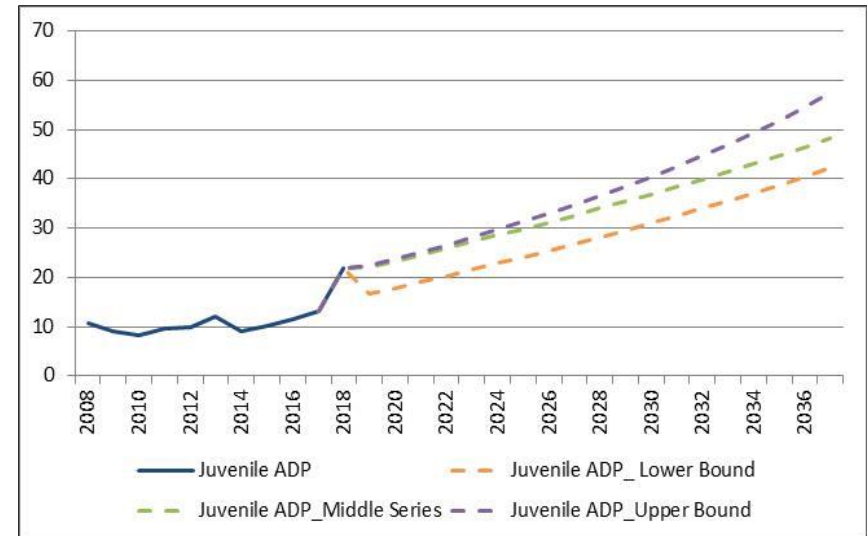


JDC AVERAGE DAILY POPULATION (ADP) HISTORY & PROJECTIONS

Historic and Projected Total Juvenile ADP



ADP Projections: Lower, Middle and Upper Bounds





JDC/Jail Assessment

JDC BED SPACE NEEDS

Juvenile Bed Space (JDC + Out County)	2017	2022	2027	2032	2037
Juvenile ADP - Projected	13	26	33	40	48
Peaking (27.9%)	4	7	9	11	13
Classification (5.0%)	1	1	2	2	2
Bedspace Needed	18	34	43	53	64

The current bed space capacity in the JDC is 16 Beds + 2 in intake



JDC/Jail Assessment

JDC BEDS/SPACE NEEDS

Component		Net Square Feet	Department Gross SF	Bldg Gross - 15%	Total BGSF
1.000	Staff Spaces	808.00	1,050.40	157.56	1,207.96
2.000	Health Services	625.00	875.00	131.25	1,006.25
3.000	Program Services	1,880.00	2,444.00	366.60	2,810.60
4.000	Living Units	12,432.00	18,026.40	2,703.96	20,730.36
5.000	Support Services	1,967.00	2,360.40	354.06	2,714.46
6.000	Court	2,380.00	2,975.00	446.25	3,421.25
GRAND TOTALS		20,092.00	27,731.20	4,159.68	31,890.88

ADDITIONAL JDC STAFF SPACES

The additional administrative spaces consist of two additional staff offices and a meeting space for 6 staff. Space includes a secure staff entry vestibule, staff break room and washrooms.

ADDITIONAL JDC HEALTH SPACES

The proposed space addition includes a health services area with proper office space, examination room, and adequate storage space for medications, equipment, supplies and refuse.

ADDITIONAL JDC PROGRAM SERVICES SPACES

Increasing the size of the JDC will require additional program spaces for the youth. This includes additional interview rooms, classrooms with storage, and additional visitation space.

ADDITIONAL JDC LIVING UNIT SPACES

To accommodate 48 additional youth, the proposed plan includes four 12-bed living units. Each having 12 individual bedrooms, program and recreation space and an outdoor recreation courtyard.



JDC/Jail Assessment

JDC STAFFING

Scott County JDC Net Annual Work Hours		JDC
1	Total hours contracted per employee per year.	2,080.00
2	Avg Bereavement hours taken per year.	2.58
3	Avg Comp-FML hours taken per year.	0.00
4	Avg Comp-Used hours taken per year.	51.07
5	Avg Floating Holiday-FML hours taken per year.	0.00
6	Avg Floating Holiday-Used hours taken per year.	15.62
7	Avg Holiday hours taken per year.	57.25
8	Avg Holiday-FML hours taken per year.	0.67
9	Avg Jury Duty hours taken per year.	0.18
10	Avg Military hours taken per year.	0.00
11	Avg Sick/Medical-FML hours taken per year.	49.61
12	Avg Sick/Medical-Used hours taken per year.	33.07
13	Avg Vacation/PTO-FML hours taken per year.	0.00
14	Avg Vacation/PTO-Used hours taken per year.	131.03
15	Avg Vacation/UPTO-FML hours taken per year.	0.00
16	Workers Comp	0.18
17	Total hours off per year (lines 2 thru 16).	341.26
18	Net Annual Work Hours (line 1 - line 17).	1,738.74

JDC STAFFING FINDINGS & RECOMMENDATIONS

1. A minimum of 13 counselors will be needed during waking hours. Staff on the evening shift can be reduced when the youth are sleeping.
2. Not all new staff will be needed at one time. Therefore, the County should plan for staffing increases to keep pace with the growing numbers of youth to be detained, maintaining a 1:5 ratio of staff-to-youth during the day.
3. As the JDC grows to more than 60 beds, the volume of youth and administrative activities will create the need for an Assistant Director.
4. The increase in administrative activities will also justify adding an Administrative Assistant position.
5. Increasing from 16 to as many as 64 youth will justify the addition of a Nurse for 40 hours each week, rather than relying on the nurses from the adult jail.

Relief Factor	JDC
Hours per year	8,760
Hours per year divided by NAWH	5.04
Relief Factor	1.26



2020-2027 JDC STAFFING AND SPACE RECOMMENDATIONS

Scott County JDC - 48 Beds		Admin				Days/	Rounded
Post/Position	M-F	Day	Evening	Night	Week	FTEs	
Subtotal Director	1.00	0.00	0.00	0.00	5.00	1	
Subtotal Assistant Director	1.00	0.00	0.00	0.00	5.00	1	
Subtotal Shift Leaders	0.00	1.00	0.00	1.00	5.00	2	
Subtotal Youth Counselors	0.00	10.00	10.00	7.00	7.00	45	
Subtotal Non-Counselors	2.00	0.00	0.00	0.00	5.00	2	
						Total Staff Needed:	51

Component		Net Square Feet	Department Gross SF	Bldg Gross - 15%	Total BGSF
1.000	Staff Spaces	808.00	1,050.40	157.56	1,207.96
2.000	Health Services	625.00	875.00	131.25	1,006.25
3.000	Program Services	1,880.00	2,444.00	366.60	2,810.60
4.000	Living Units (3)	9,324.00	13,519.80	2,027.97	15,547.77
GRAND TOTALS		12,637.00	17,889.20	2,683.38	20,572.58



JDC/Jail Assessment

2027-2037 JDC STAFFING RECOMMENDATIONS

Scott County JDC - 64 Beds		Admin				Days/ Week	Rounded
Post/Position	M-F	Day	Evening	Night	Week	FTEs	
Subtotal Director	1.00	0.00	0.00	0.00	5.00	1.00	
Subtotal Assistant Director	1.00	0.00	0.00	0.00	5.00	1.00	
Subtotal Shift Leaders	0.00	1.00	0.00	1.00	5.00	2.00	
Subtotal Youth Counselors	0.00	14.00	13.00	9.00	7.00	60.00	
Subtotal Non-Counselors	2.00	0.00	0.00	0.00	5.00	2.00	
Total Staff Needed:						66	

Scott County JDC - 64 Beds		Admin				Days/ Week	Hours/ Week	Coverage Hrs/Yr	Is Relief Needed	NAWH	Total FTEs	Rounded FTEs
Post/Position	M-F	Day	Evening	Night	Week	Week	Week	Week	Week	Week	Week	Week
Director	1.00				5	40.00	2,085.60	No			1.00	
Subtotal Major	1.00					40.00	2,085.60				1.00	1
Assistant Director	1.00				5	40.00	2,085.60	No			1.00	
Subtotal Assistant Director	1.00					40.00	2,085.60				1.00	1
Shift Leader		1.00		1.00	5	42.00	2,189.88	No			2.00	
Subtotal Shift Leaders	0.00	1.00		1.00		42.00	2,189.88				2.00	2
Youth Counselor		13.00	13.00	9.00	7	1,960.00	102,194.40	Yes	1,738.74		58.77	
Court Monitor		1.00			5	40.00	2,085.60	Yes	1,738.74		1.20	
Subtotal Youth Counselors	0.00	14.00	13.00	9.00		2000.00	104280.00				59.97	60
Administrative Assistant	1.00				5	40.00	2,085.60	No			1.00	
Nurse	1.00				5	40.00	2,085.60	No			1.00	
Subtotal Non-Counselors	2.00	0.00	0.00	0.00		80.00	4,171.20				2.00	2
Total Staff Needed:											66	



JDC/Jail Assessment

JAIL

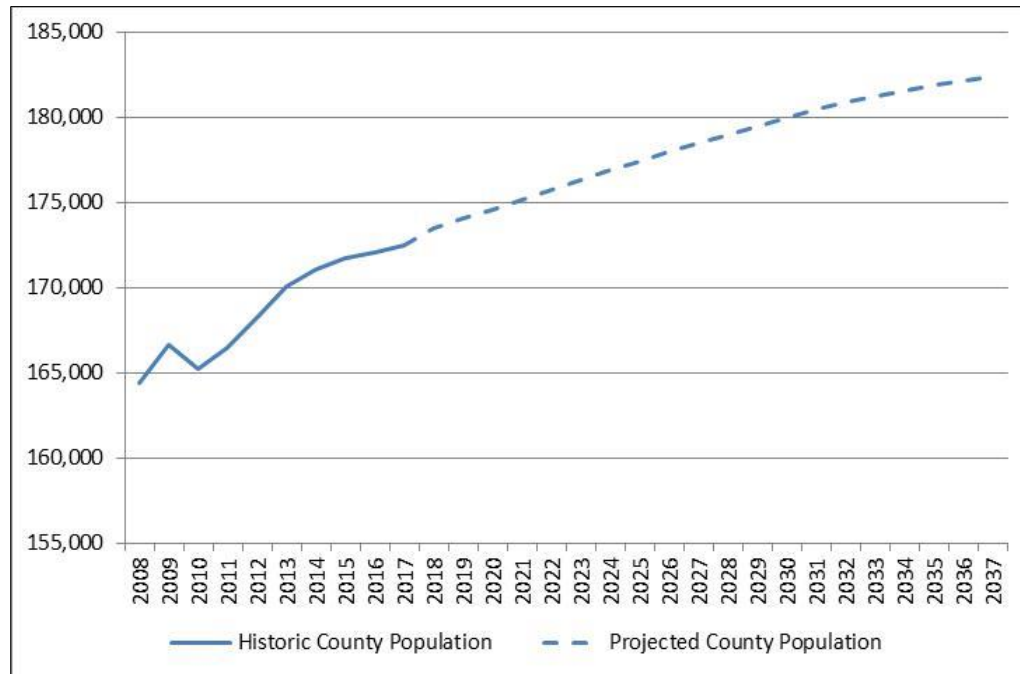




JDC/Jail Assessment

JAIL HISTORY & PROJECTIONS

Scott County Population (history and projected)

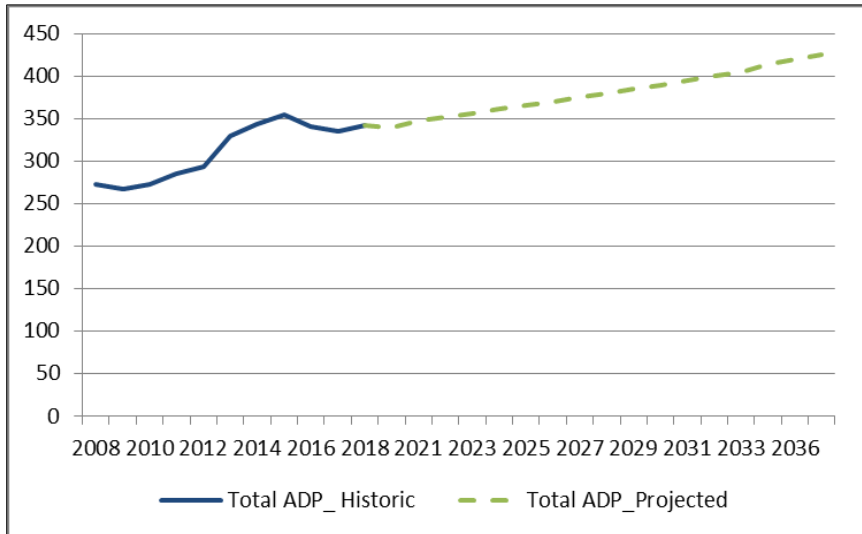


The population is projected to increase from 172,509 in 2017 to 182,434 by 2037

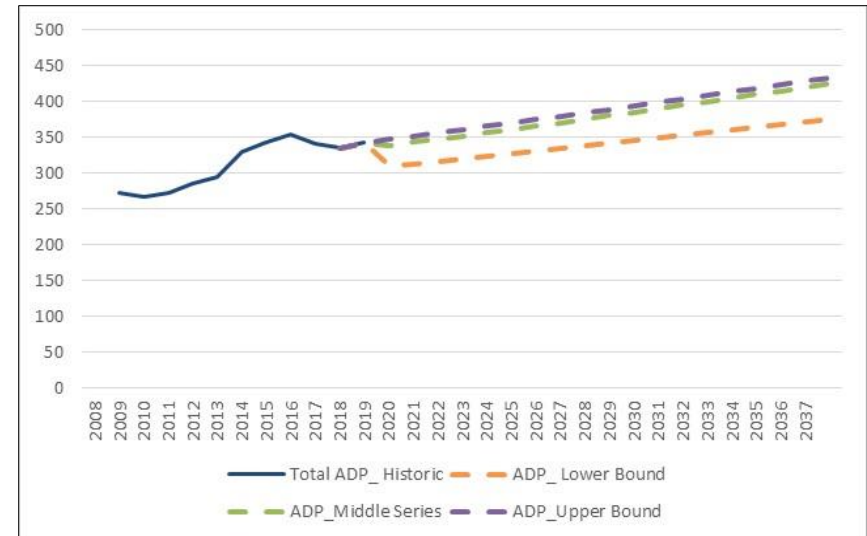


JAIL AVERAGE DAILY POPULATION (ADP) HISTORY & PROJECTIONS

Historic and Projected Total ADP



ADP Projections: Lower, Middle and Upper Bounds



Average Daily Population (ADP) is currently 342 inmates if all Scott County detainees were housed at the jail. The ADP is projected to increase to as much as 433 detainees by 2027



JDC/Jail Assessment

JAIL BED SPACE NEEDS

Current Bed Space in the Jail

Intake	72
Female	50
Special Management	76
Dorm	32
Flex	7
General Population	128
TOTAL	365

Bedspace Projections	2017	2022	2027	2032	2037
Adult ADP - Projected	335	352	375	400	425
Peaking (9.0%)	30	32	34	36	38
Classification (5.0%)	17	18	19	20	21
Bedspace Needed - Projected	382	401	428	456	484



JDC/Jail Assessment

JAIL BEDS/SPACE NEEDS

Component		Net Square Feet	Department Gross SF	Bldg Gross - 15%	Total BGSF
1.100	Housing Control	135.00	209.25	31.39	240.64
1.200	24-Bed Housing Unit	3,626.00	5,620.30	843.05	6,463.35
1.300	48- Bed Housing Units (2)	10,344.00	16,033.20	2,404.98	18,438.18
GRAND TOTALS		14,105.00	21,862.75	3,279.41	25,142.16

HOUSING CONTROL SPACES

As these new housing units may be located separate from the existing housing (i.e. the current parking lot), a Housing Control room has been included to maximize staff presence and security of the new spaces.

24-BED HOUSING UNIT SPACES

The smaller 24-bed Housing Unit may be appropriate for specialty groups of inmates such as those in need of protective custody, inmates with medical needs or mental illness, or others that should not be housed with the general inmate population.

48-BED HOUSING UNIT SPACES

The two additional 48-bed Housing Units may house various groups of inmates based upon the objective classification system.



JDC/Jail Assessment

JAIL STAFFING

Scott County Jail Net Annual Work Hours		Sergeant	Corrections Officer
1	Total hours contracted per employee per year.	2,184.00	2,184.00
2	Avg Bereavement hours taken per year.	4.28	5.71
3	Avg Comp-FML hours taken per year.	6.36	2.84
4	Avg Comp-Used hours taken per year.	64.57	54.67
5	Avg Floating Holiday-FML hours taken per year.	0.51	0.41
6	Avg Floating Holiday-Used hours taken per year.	16.13	9.21
7	Avg Holiday hours taken per year.	65.74	64.68
8	Avg Holiday-FML hours taken per year.	0.70	0.74
9	Avg Jury Duty hours taken per year.	0.09	0.27
10	Avg Military hours taken per year.	0.00	1.90
11	Avg Sick/Medical-FML hours taken per year.	45.87	27.92
12	Avg Sick/Medical-Used hours taken per year.	49.66	3.55
13	Avg Vacation/PTO-FML hours taken per year.	3.76	15.09
14	Avg Vacation/PTO-Used hours taken per year.	171.38	103.17
15	Avg Vacation/UPTO-FML hours taken per year.	0.00	40.58
16	Workers Comp	0.80	0.43
17	Total hours off per year (lines 2 thru 16).	429.86	331.20
18	Net Annual Work Hours (line 1 - line 17).	1,754.14	1,852.80

JAIL STAFFING FINDINGS & RECOMMENDATIONS

1. The Shift Sergeant Posts should have relief staff factored into the staffing complement for times when these staff are away due to illness, vacation, etc. This will require 15 Shift Sergeants to provide full coverage.
2. The posts in the Booking area appear to be adequate, and no additional staffing is recommended.
3. It is recommended that two officers be assigned to the Female Housing, Intake Housing, and Special Management Housing units on days and during the evenings until lockdown.
4. The three Escort officer posts (other than Booking, Female Housing) may be able to be reduced to two during the day, and may be further reduced to one Escort officer after lockdown.
5. Given that public visitation takes place in a non-secure area, the Sheriff may consider converting this to a civilian post.
6. As the inmate population grows, a third Classification Specialist may be needed, and if alternative programs become more prevalent, an Alternative Sentence Specialist may need to be considered.

Relief Factor	Sergeant	Corrections Officer
Hours per year	8,760	8,760
Hours per year divided by NAWH	4.99	4.73
Relief Factor	1.25	1.18



JDC/Jail Assessment

CURRENT JAIL STAFFING RECOMMENDATIONS

Scott County Jail	Admin	Day	Night	Days/Week	Hours/Week	Coverage Hrs/Yr	Is Relief Needed	NAWH	Total FTEs	Rounded FTEs
Post/Position	M-F									
Jail Administrator	1.00			5	40.00	2,085.60	No		1.00	
Subtotal Major	1.00				40.00	2,085.60			1.00	1
Captain	1.00			5	40.00	2,085.60	No		1.00	
Subtotal Captain	1.00				40.00	2,085.60			1.00	1
Shift Commander		1.00	1.00	5	42.00	2,189.88	No		2.00	
Subtotal Lieutenants	0.00	1.00	1.00		42.00	2,189.88			2.00	2
Training Sergeant	1.00			5	40.00	2,085.60	No		1.00	
Program Sergeant	1.00			5	40.00	2,085.60	No		1.00	
Shift Sergeant		3.00	3.00	7	504.00	26,278.56	Yes	1,754.14	14.98	
Subtotal Sergeants	2.00	3.00	3.00		584.00	30,449.76			16.98	17
Booking		1.00	1.00	7	168.00	8,759.52	Yes	1,852.80	4.73	
Identification		1.00	1.00	7	168.00	8,759.52	Yes	1,852.80	4.73	
Booking/Release		1.00	1.00	7	168.00	8,759.52	Yes	1,852.80	4.73	
Booking Escort		1.00	1.00	7	168.00	8,759.52	Yes	1,852.80	4.73	
Female Housing		2.00	1.50	7	294.00	15,329.16	Yes	1,852.80	8.27	
Female Housing Escort		1.00	0.00	7	84.00	4,379.76	Yes	1,852.80	2.36	
General Population - North		1.00	1.00	7	168.00	8,759.52	Yes	1,852.80	4.73	
General Population - South		1.00	1.00	7	168.00	8,759.52	Yes	1,852.80	4.73	
Intake Housing		2.00	1.50	7	294.00	15,329.16	Yes	1,852.80	8.27	
Special Management		2.00	1.50	7	294.00	15,329.16	Yes	1,852.80	8.27	
Housing Escort		2.00	1.50	7	294.00	15,329.16	Yes	1,852.80	8.27	
Central Control		1.00	1.00	7	168.00	8,759.52	Yes	1,852.80	4.73	
Visitation Officer		1.00	0.00	5	60.00	3,128.40	Yes	1,852.80	1.69	
Visitation Officer		0.33	0.00	2	7.92	412.95	Yes	1,852.80	0.22	
Subtotal Correctional Officers	0.00	17.33	13.00		2,503.92	130,554.39			70.46	70
Jail Custodian	4.00	34.66	26.00	5	2,586.40	134,854.90	No		4.00	
Classification Specialist	2.00		60.66	5	2,506.40	130,683.70	No		2.00	
Program Services Coordinator	2.00			5	80.00	4,171.20	No		2.00	
Court Compliance Officer	2.00			5	80.00	4,171.20	No		2.00	
Alternative Sentence Coordinator	1.00			5	40.00	2,085.60	No		1.00	
Food Service Manager	1.00			5	40.00	2,085.60	No		1.00	
Cook		2.00	2.00	7	160.00	8,342.40	No		4.00	
Subtotal Non-Correctional Officer	12.00	36.66	88.66		5,492.80	286,394.59			16.00	16
Total Staff Needed:									107	



EXPANDED JAIL STAFFING RECOMMENDATIONS

Expanded Scott County Jail	Admin				Total	Rounded
Post/Position	M-F	Day	Night	NAWH	FTEs	FTEs
Subtotal Major	1.00	0.00	0.00		1.00	1
Subtotal Captain	1.00	0.00	0.00		1.00	1
Subtotal Lieutenants	0.00	1.00	1.00		2.00	2
Subtotal Sergeants	2.00	3.00	3.00	1,754.14	16.98	17
Subtotal Correctional Officers	0.00	21.33	17.00	1,852.80	89.37	89
Subtotal Non-Correctional Officer	14.00	44.66	112.66		18.00	18
					Total Staff Needed:	128



JDC/Jail Assessment

EXPANDED JAIL STAFFING RECOMMENDATIONS

Expanded - Scott County Jail										
Post/Position	Admin M-F	Day	Night	Days/ Week	Hours/ Week	Coverage Hrs/Yr	Is Relief Needed	NAWH	Total FTEs	Rounded FTEs
Jail Administrator	1.00			5	40.00	2,085.60	No		1.00	
Subtotal Major	1.00				40.00	2,085.60			1.00	1
Captain	1.00			5	40.00	2,085.60	No		1.00	
Subtotal Captain	1.00				40.00	2,085.60			1.00	1
Shift Commander		1.00	1.00	5	42.00	2,189.88	No		2.00	
Subtotal Lieutenants	0.00	1.00	1.00		42.00	2,189.88			2.00	2
Training Sergeant	1.00			5	40.00	2,085.60	No		1.00	
Program Sergeant	1.00			5	40.00	2,085.60	No		1.00	
Shift Sergeant		3.00	3.00	7	504.00	26,278.56	Yes	1,754.14	14.98	
Subtotal Sergeants	2.00	3.00	3.00		584.00	30,449.76			16.98	17
Booking		1.00	1.00	7	168.00	8,759.52	Yes	1,852.80	4.73	
Identification		1.00	1.00	7	168.00	8,759.52	Yes	1,852.80	4.73	
Booking/Release		1.00	1.00	7	168.00	8,759.52	Yes	1,852.80	4.73	
Booking Escort		1.00	1.00	7	168.00	8,759.52	Yes	1,852.80	4.73	
Female Housing		2.00	1.50	7	294.00	15,329.16	Yes	1,852.80	8.27	
Female Housing Escort		1.00	0.00	7	84.00	4,379.76	Yes	1,852.80	2.36	
General Population - North		1.00	1.00	7	168.00	8,759.52	Yes	1,852.80	4.73	
General Population - South		1.00	1.00	7	168.00	8,759.52	Yes	1,852.80	4.73	
Intake Housing		2.00	1.50	7	294.00	15,329.16	Yes	1,852.80	8.27	
Special Management		2.00	1.50	7	294.00	15,329.16	Yes	1,852.80	8.27	
Housing Control		1.00	1.00	7	168.00	8,759.52	Yes	1,852.80	4.73	
New 48 Bed Housing Unit		1.00	1.00	7	168.00	8,759.52	Yes	1,852.80	4.73	
New 48 Bed Housing Unit		1.00	1.00	7	168.00	8,759.52	Yes	1,852.80	4.73	
New 24 Bed Housing Unit		1.00	1.00	7	168.00	8,759.52	Yes	1,852.80	4.73	
Housing Escort		2.00	1.50	7	294.00	15,329.16	Yes	1,852.80	8.27	
Central Control		1.00	1.00	7	168.00	8,759.52	Yes	1,852.80	4.73	
Visitation Officer		1.00	0.00	5	60.00	3,128.40	Yes	1,852.80	1.69	
Visitation Officer		0.33	0.00	2	7.92	412.95	Yes	1,852.80	0.22	
Subtotal Correctional Officers	0.00	21.33	17.00		3,175.92	165,592.47			89.37	89
Jail Custodian	4.00	42.66	34.00	5	3,226.40	168,224.50	No		4.00	
Classification Specialist	4.00		76.66	5	3,226.40	168,224.50	No		4.00	
Program Services Coordinator	2.00			5	80.00	4,171.20	No		2.00	
Court Compliance Officer	2.00			5	80.00	4,171.20	No		2.00	
Alternative Sentence Coordinator	1.00			5	40.00	2,085.60	No		1.00	
Food Service Manager	1.00			5	40.00	2,085.60	No		1.00	
Cook		2.00	2.00	7	160.00	8,342.40	No		4.00	
Subtotal Non-Correctional Officer	14.00	44.66	112.66		6,852.80	357,304.99			18.00	18
Total Staff Needed:									128	



JDC/Jail Assessment

JDC & JAIL OPTIONS





JDC/Jail Assessment

FUTURE JDC SPACE NEEDS

1.000 STAFF SPACES					
	Space Designation	Space Standard SF	No. of Spaces	Total Sq. Ft.	COMMENTS
1.100	Administrative Spaces				
1.101	Office	100	2	200	Desk, file cabinets and side chairs
1.102	Staff Meeting Room	24	6	144	Meeting table and chairs, cabinet
1.200	Staff Facilities				
1.201	Staff Entrance/Secure Vestibule	80	1	80	Dedicated staff access point
1.202	Staff Room	35	8	280	Seating for 8 people, on exterior wall with natural light, counter, sink, refrigerator, microwave, tables and chairs
1.203	Staff Washrooms	52	2	104	
				Net SF	808
Grossing Factor				30%	242
Total DGSF				1,050	
Total DGSF				1,050	
Building Gross				15%	158
Total BGSF for Staff Spaces				1,208	

Source: Wold-Justice Planners, January 2019

3.000 PROGRAM SERVICES					
	Space Designation	Space Standard SF	No. of Spaces	Total Sq. Ft.	COMMENTS
3.100	Programs				
Shared spaces					
3.101	Interview Rooms	60	3	180	View panels in door, accessible from security vestibule only
3.102	Classrooms/ Programs	360	3	1,080	Capacity for 15 inmates each, tables and chairs w/glazing for observation by staff
3.103	Classroom Material Storage Room	60	3	180	shelving, classroom materials and supplies
3.104	Visitation Vestibule	80	1	80	Interlocked
3.105	Group Visitation	360	1	360	Comfortable seating
				Net SF	1,880
Grossing Factor				30%	564
Total DGSF				2,444	
Total DGSF				2,444	
Building Gross				15%	367
Total BGSF for Program Services				2,811	

Source: Wold-Justice Planners, January 2019

2.000 HEALTH SERVICES					
	Space Designation	Space Standard SF	No. of Spaces	Total Sq. Ft.	COMMENTS
2.100	Health Services				
2.101	Doctor/ Nurse Office	100	1	100	Private office
2.102	Washroom	50	1	50	Toilet, sink
2.103	Storage	40	1	40	Office supply closet with shelving
2.104	Examination Room	120	1	120	w/sink and cabinets
2.105	Medication Storage	60	1	60	Secure room, sink, cupboard, mini-refrigerator, ventilated
2.106	Medical Supplies/Equipment Storage	100	1	100	Space to store stretchers and wheelchairs
2.107	Clean Sterile Supply	40	1	40	Counter, shelving. Shared with Infirmary
2.108	Soiled Holding	40	1	40	Secure room
2.109	Bio-Hazardous Waste Storage	40	1	40	Secure room
2.110	Janitor's Closet	35	1	35	w/utility sink
				Net SF	625
Grossing Factor				40%	250
Total DGSF				875	
Total DGSF				875	
Building Gross				15%	131
Total BGSF for Health Services				1,006	

Source: Wold-Justice Planners, January 2019

JDC/Jail Assessment

FUTURE JDC SPACE NEEDS

4.000 LIVING UNITS					
	Space Designation	Space Standard SF	No. of Spaces/Users	Total Sq. Ft.	COMMENTS
4.100	Juvenile Living Unit				12-Bed Living Unit
4.101	Dayroom Sallyport	100	1	100	Interlocking doors.
4.102	Dayroom	35	12	420	With natural light, television, durable seating and tables, wall-mounted phones
4.103	Bedrooms	80	12	960	Single bed , wall-mounted writing surface with seat, exterior window
4.104	Indoor Recreation/ Programs	30	12	360	Movable tables and chairs, computer-smartboard access, monitors
4.105	Showers (ADA)	55	4	220	Observable; ADA; dayroom level; semi-enclosed stalls
4.106	Dayroom sink	15	1	15	Cabinet and sink with hot water
4.107	Storage Room	48	1	48	Secured access
4.108	Inmate Toilets	50	4	200	ADA compliant
4.109	Janitor's Closet	35	1	35	Utility sink
4.110	Outdoor Recreation Courtyard	750	1	750	Adjacent to and visible from dayroom
				Net SF	3,108
Grossing Factor 45%				1,399	Outdoor courtyard not included in total
Total Gross SF				4,507	
Number of Housing Units = 4				18,026	
Total DGSF				18,026	
Building Gross 15%				2,704	
Total BGSF for Housing				20,730	

Source: Wold-Justice Planners, January 2019

6.000 COURT					
	Space Designation	Space Standard	No. of Spaces	Total Sq. Ft.	COMMENTS
6.100	Court				
6.101	Entry Vesibule	80	1	80	Weather vestibule
6.102	Lobby	400	1	400	Information kiosks, seating
6.103	Washrooms	60	2	120	Includes changing stations
6.104	Family Staging/ Waiting	20	24	480	Capacity for 24 people, seating
6.105	Courtroom	1,100	1	1,100	Bench, recorder, attorneys, family seating
6.106	Chambers	200	1	200	
				Net SF	2,380
Grossing Factor 25%				595	
Total DGSF				2,975	
Total DGSF				2,975	
Building Gross 15%				446	
Total BGSF for Program Services				3,421	

Source: Wold-Justice Planners, January 2019

5.000 SUPPORT SERVICES					
	Space Designation	Space Standard SF	No. of Spaces	Total Sq. Ft.	COMMENTS
5.100	Food Services				
5.101	Kitchen Office	100	1	100	One room with a view of the food preparation area, three workstations plus file shelving one wall
5.102	General Cooler Room	120	1	120	For daily delivered fresh products
5.103	General Freezer Room	100	1	100	For incidental/Emergency products.
5.104	Bulk Dry Goods Store	160	1	160	Shelves and racks for dry and canned goods.
5.105	Preparation/Finishing Area	260	1	260	Cooking equipment, food preparation
5.106	Tray/M meal Delivery Cart Staging Area	120	1	120	Transport carts are loaded and staged for delivery.
5.107	Beverage Production Area	60	1	60	For bulk brewing of beverages and preparation of insulated containers.
5.108	Central Dishwashing	120	1	120	
5.109	Meal Tray Storage Area	100	1	100	For the storage of clean trays
5.110	Cart Wash Area	100	1	100	Adjacent to the dishwash area.
5.111	Washroom	60	2	120	Includes vestibule with lockers
5.112	Chemical Storage	60	1	60	As required for kitchen chemicals. Locate in close proximity to janitor closet
5.113	Janitor Closet	35	1	35	Mop sink.
				Net SF	1,455
Grossing Factor 20%				291	
Total DGSF				1,746	
5.200	Laundry Services				
5.201	Laundry Room	260	1	260	Industrial washer & dryer for institutional clothing, bedding, towels, and blankets and one small washer for contaminated items. Folding tables
5.202	Chemical Storage/Supplies/Janitor	80	1	80	
5.203	General Laundry Storage	120	1	120	
5.204	Inmate Washroom	52	1	52	
				Net SF	512
Grossing Factor 20%				102	
Total DGSF				614	
Total DGSF				2,360	
Building Gross 15%				354	
Total BGSF for Housing				2,714	

Source: Wold-Justice Planners, January 2019



JDC/Jail Assessment
FUTURE JDC SPACE NEEDS

TOTAL JDC 2037 SPACE NEEDS – 64 BEDS

STAFF SPACES	1,208 sf	
HEALTH SERVICES	1,006 sf	
PROGRAM SERVICES	2,811 sf	
(5) 12 BED LIVING UNITS	25,915 sf	(scalable)
(1) 4 BED UNIT	1,727 sf	
SUPPORT SERVICES	2,714 sf	
COURT	3,421 sf	
TOTAL	38,802 sf	



JDC/Jail Assessment

FUTURE JAIL SPACE NEEDS

ADULT JAIL PROPOSED HOUSING					
	Space Designation	Space Standard	No. of Spaces	Total Sq. Ft.	COMMENTS
1.100	Housing Control				
1.101	Housing Control Sallyport	64	1	64	Interlocked doors, secure entry to Housing Control
1.102	Housing Control	120	1	120	Controls inner door of the secure vestibule serving the housing pods, controls cell doors and lighting, raised control room. Flooring must accommodate electronics, workstation
1.103	Staff Washroom	52	2	104	Access from Housing Control
1.104	Equipment Storage	100	1	100	Shelving
1.105	Janitor's Closet	35	1	35	Utility sink and shelving
				Net SF	135
Grossing Factor				55%	74
				Total DGSF	209

ADULT JAIL PROPOSED HOUSING					
	Space Designation	Space Standard	No. of Spaces	Total Sq. Ft.	COMMENTS
1.200	24-Bed Housing Unit				
1.201	Dayroom Sallyport	100	1	100	Interlocking doors.
1.202	Triage Room	80	1	80	Access from sallyport, operable window into dayroom for med pass, secure storage, triage room
1.203	Dayroom	35	24	840	With natural light
1.204	Officer's Workstation	64	1	64	Open workstation
1.205	Inmate Cell - Single Occupancy	80	24	1,920	Bunk beds , 2 wall-mounted writing surfaces with seats, ss combo toilet/lav
1.206	Interview Room	60	1	60	View panels in door, accessible from security vestibule only
1.207	Multipurpose/Program Room	15	12	180	visible from dayroom, shelves on wall for library books
1.208	Video Visitation Booth	12	2	24	
1.209	Showers (ADA)	55	2	110	Observable; ADA; dayroom level; semi-enclosed stalls
1.210	Handwash Station	10	1	10	
1.211	Dayroom sink	15	1	15	Cabinet and sink with hot water
1.212	Inmate Telephone	4	2	8	
1.213	Storage Room	80	1	80	Secured access
1.214	Inmate Toilet (ADA)	50	2	100	
1.215	Janitor's Closet	35	1	35	Utility sink
1.216	Outdoor Recreation Courtyard	750	1	750	Adjacent to and visible from dayroom
				Net SF	3,626
Grossing Factor				55%	1,994
				Total DGSF	5,620



JDC/Jail Assessment

FUTURE JAIL SPACE NEEDS

ADULT JAIL PROPOSED HOUSING					
	Space Designation	Space Standard	No. of Spaces	Total Sq. Ft.	COMMENTS
1.300	48-Bed Housing Unit				
1.301	Dayroom Sallyport	100	1	100	Interlocking doors
1.302	Triage Room	80	1	80	Access from sallyport, operable window into dayroom for med pass, secure storage, triage room
1.303	Dayroom	35	48	1,680	With natural light
1.304	Officer's Workstation	64	1	64	Open workstation
1.305	Inmate Cell - Double Occupancy	100	24	2,400	Bunk beds , 2 wall-mounted writing surfaces with seats, ss combo toilet/lav
1.306	Interview Room	80	1	80	View panels in door, accessible from security vestibule only
1.307	Multipurpose/Program Room	15	16	240	visible from dayroom, shelves on wall for library books
1.308	Video Visitation Booth	12	4	48	
1.309	Showers (ADA)	55	4	220	Observable; ADA; dayroom level; semi-enclosed stalls
1.310	Handwash Station	10	1	10	
1.311	Dayroom sink	15	1	15	Cabinet and sink with hot water
1.312	Inmate Telephone	4	5	20	
1.313	Storage Room	80	1	80	Secured access
1.314	Inmate Toilet (ADA)	50	2	100	
1.315	Janitor's Closet	35	1	35	Utility sink
1.316	Outdoor Recreation Courtyard	750	1	750	Adjacent to and visible from dayroom
			Net SF	5,172	Outdoor courtyard not included in total
		Grossing Factor	55%	2,845	
			DGSF	8,017	
		Number of Housing Units =	2	16,033	
			Total DGSF	21,863	
		Building Gross	15%	3,279	
			Total BGSF for Housing	25,142	

Source: Wold-Justice Planners, January 2019



FUTURE JAIL EXPANSION SPACE NEEDS

TOTAL JAIL 2039 ADDITIONAL SPACE NEEDS – 120 BEDS

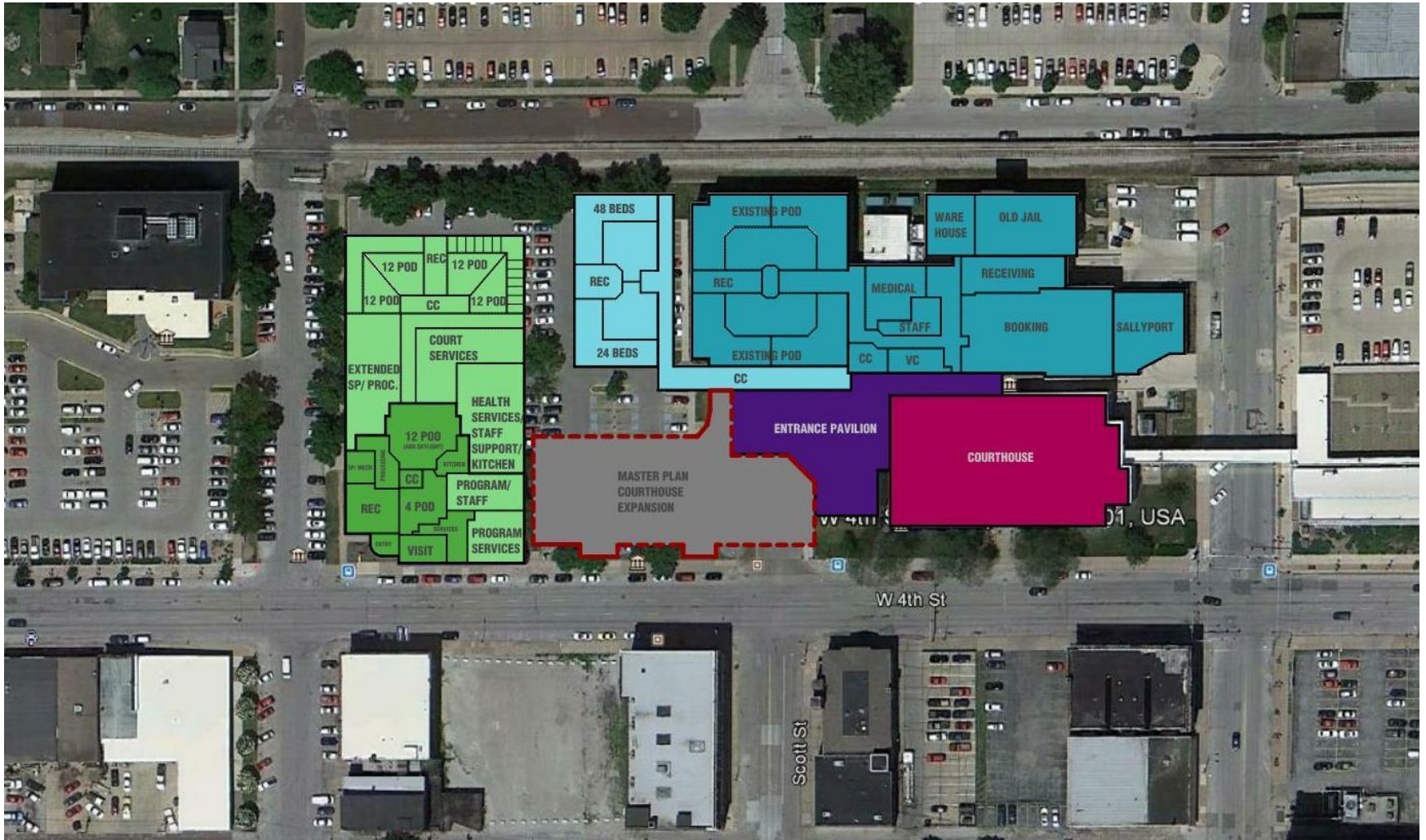
CONTROL SPACES	209 sf
(1) 24 BED HOUSING UNIT	5,620 sf
(2) 48 BED HOUSING UNIT	25,142 sf
TOTAL	30,971 sf

(scalable)

JDC/Jail Assessment

OPTION I – JDC & JAIL ADDITIONS

Separate Facilities





OPTION 1 – BUDGET ESTIMATE

JDC Addition/Renovations

Addition (full build-out)	23,150 SF x \$425	= \$ 9,838,750
Addition (shelled space)	2,840 SF x \$175	= \$ 497,000
Renovations	4,200 SF x \$350	= \$ 1,470,000
Additional Site Work/Grading		= \$ 750,000
	Total Construction Cost	= \$12,555,750
	Project Cost Multiplier	x 1.3
	Total Project Costs	= \$16,322,475

Jail Addition

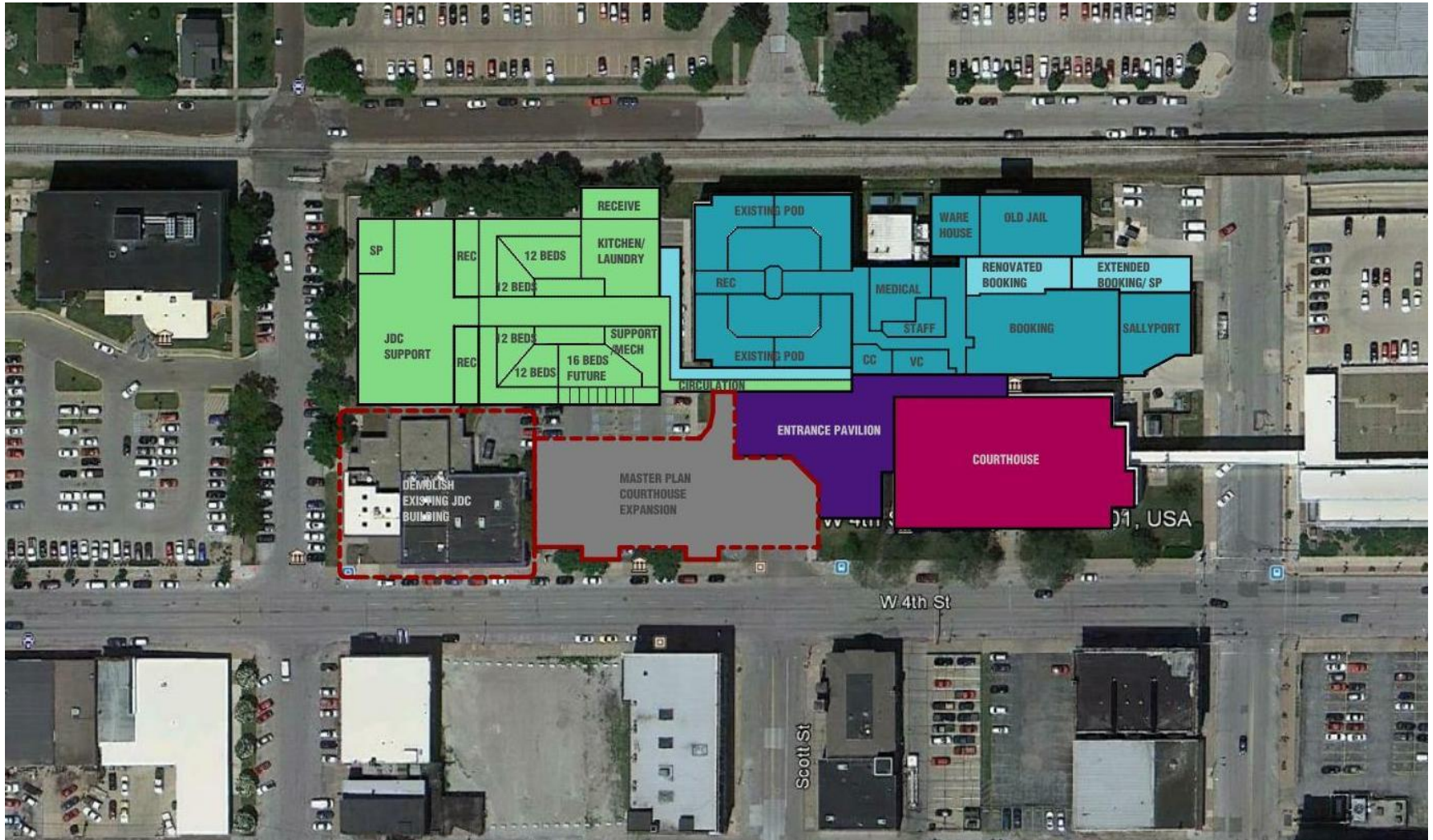
Addition (full build-out)	16,265 SF x \$425	= \$ 6,912,625
Addition (shelled space)	12,725 SF x \$175	= \$ 2,226,875
Fiber Relocate		= \$ 35,000
	Total Construction Cost	= \$ 9,147,500
	Project Cost Multiplier	x 1.3
	Total Project Costs	= \$11,926,850

Total Option 1 Project Costs = \$28,249,325

** Costs do not include relocated parking approx. 110 spots

OPTION 2 – COMBINED JDC/JAIL ADDITION

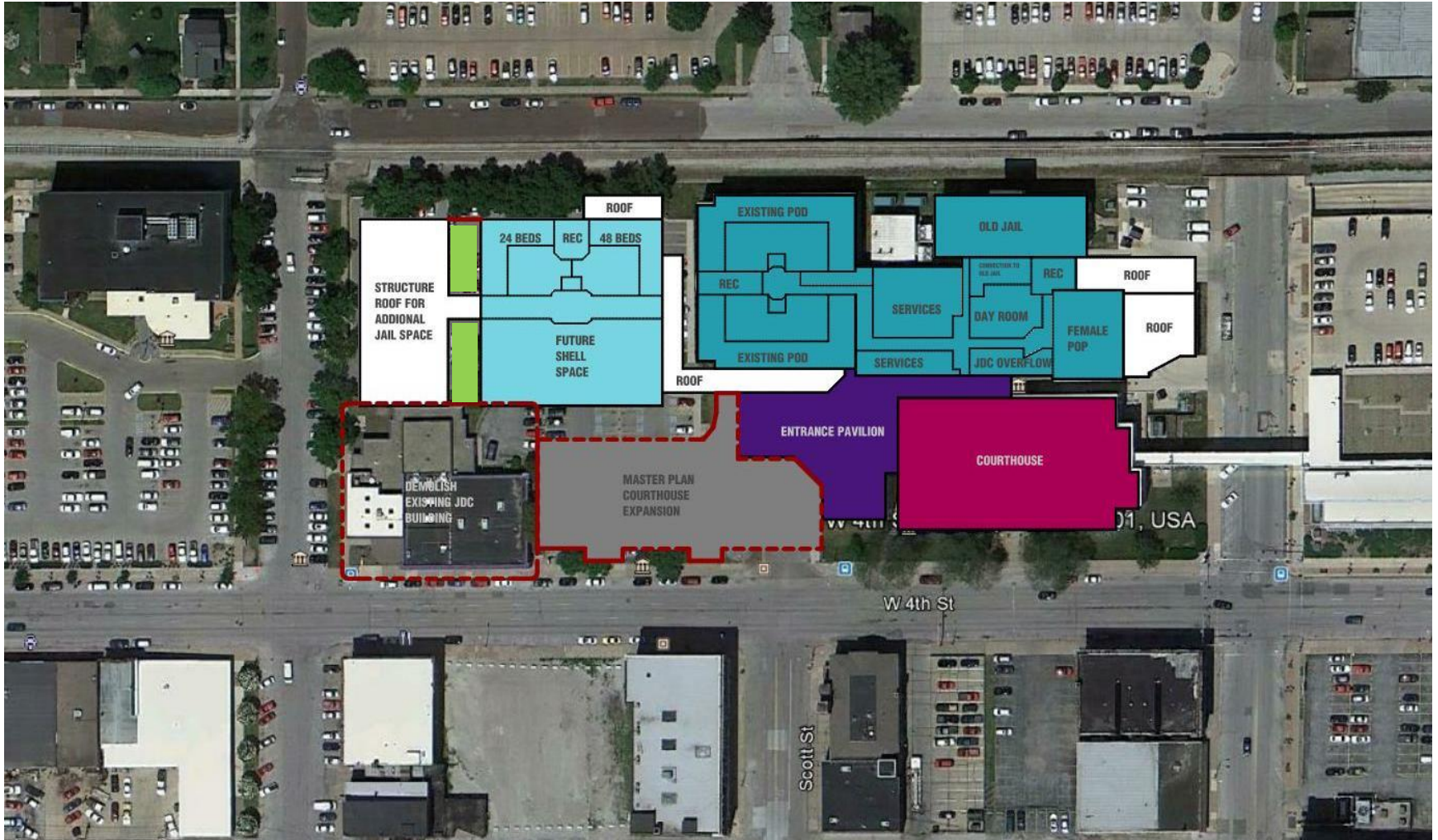
Main Level





OPTION 2 – COMBINED JDC/JAIL ADDITION

Upper Level





OPTION 2 – BUDGET ESTIMATE

JDC Addition

Addition (full build-out)	41,910 SF x \$425	= \$17,811,750
Addition (shelled space)	3,300 SF x \$175	= \$ 577,500
Fiber Relocation		= \$ 35,000
Total Construction Cost		= \$18,424,250
Project Cost Multiplier	x	1.3
Total Project Costs		= \$23,951,525

Jail Addition/Renovations

Addition (full build-out)	13,600 SF x \$425	= \$ 5,780,000
Addition (shelled space)	11,200 SF x \$175	= \$ 1,960,000
Booking Addition	2,800 SF x \$425	= \$ 1,190,000
Booking Renovations	2,650 SF x \$350	= \$ 927,500
Total Construction Cost		= \$ 9,857,500
Project Cost Multiplier	x	1.3
Total Project Costs		= \$12,814,750

Total Option 2 Project Costs = \$36,766,275

** Costs do not include relocated parking approx. 150 spots

Potential Future Jail Build-Out Above JDC = 12,700 SF x \$425 = \$ 5,397,500

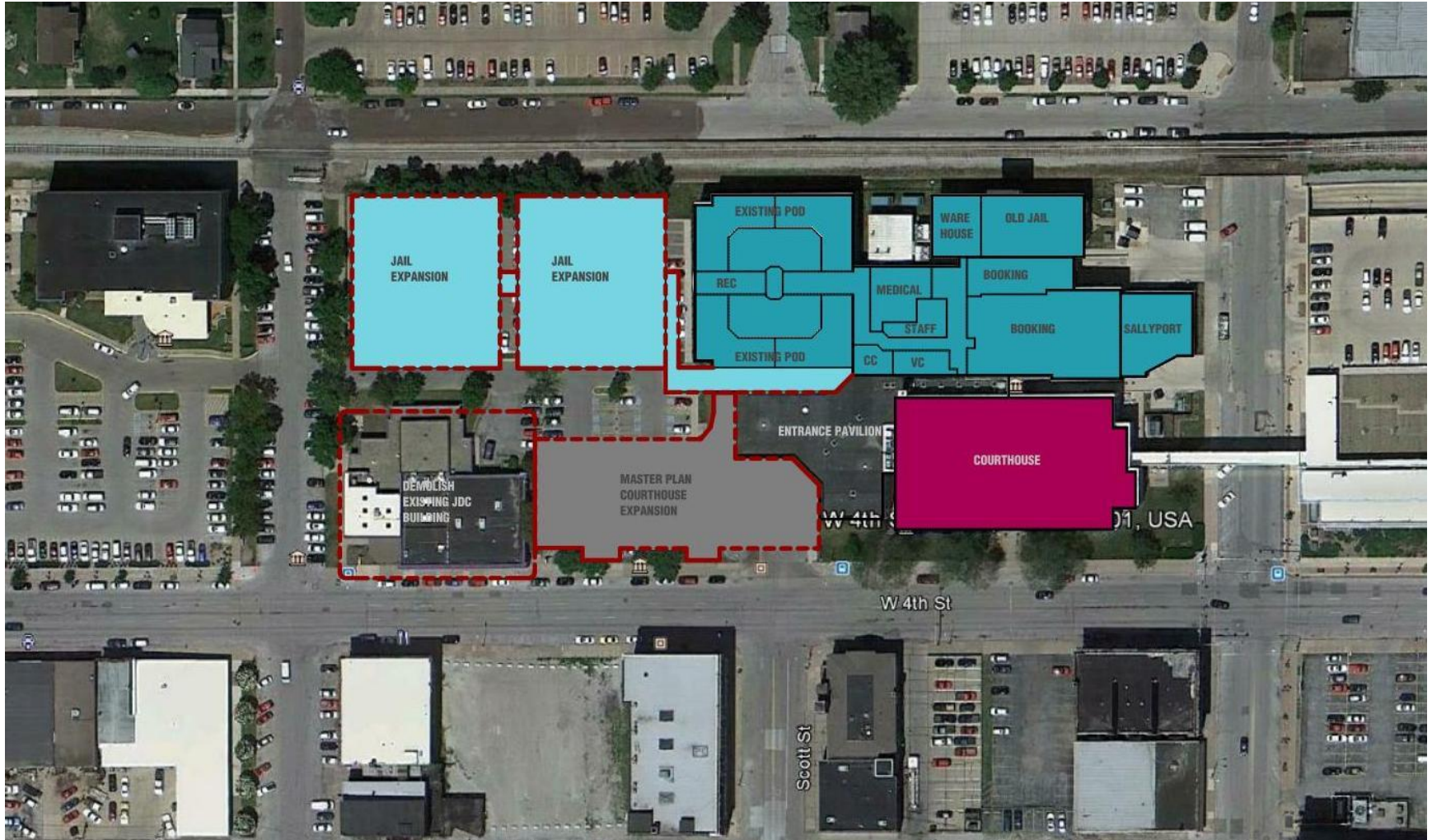
JDC/Jail Assessment

OPTION 3 – JAIL ADDITION & NEW JDC OFF-SITE



JDC/Jail Assessment

OPTION 3 – JAIL ADDITION & NEW JDC OFF-SITE

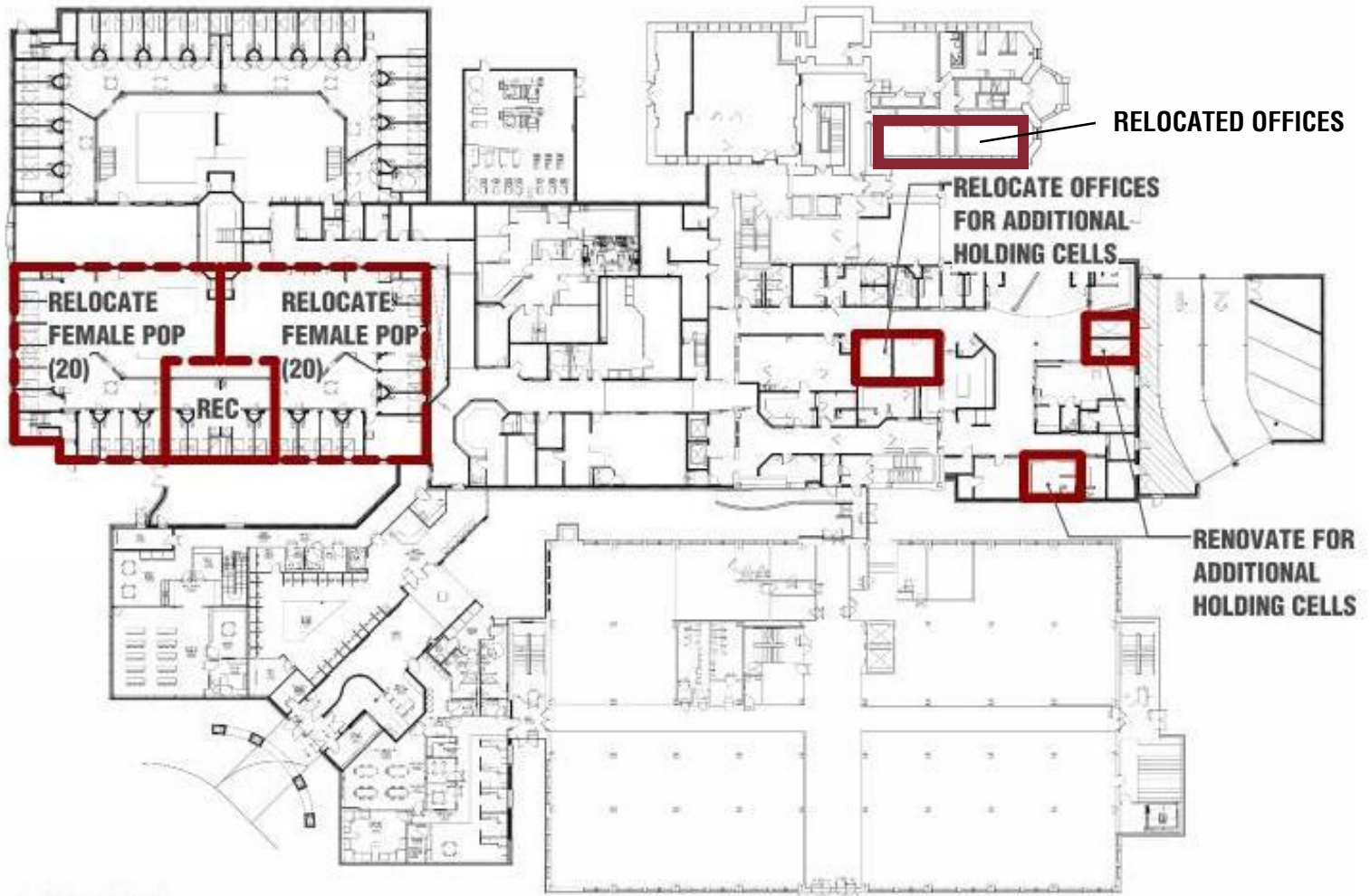


JDC/Jail Assessment

SHORT TERM JAIL OPTION- A

Renovations Main Level

Each Female Pod could be 40 if double bunked (80 total)

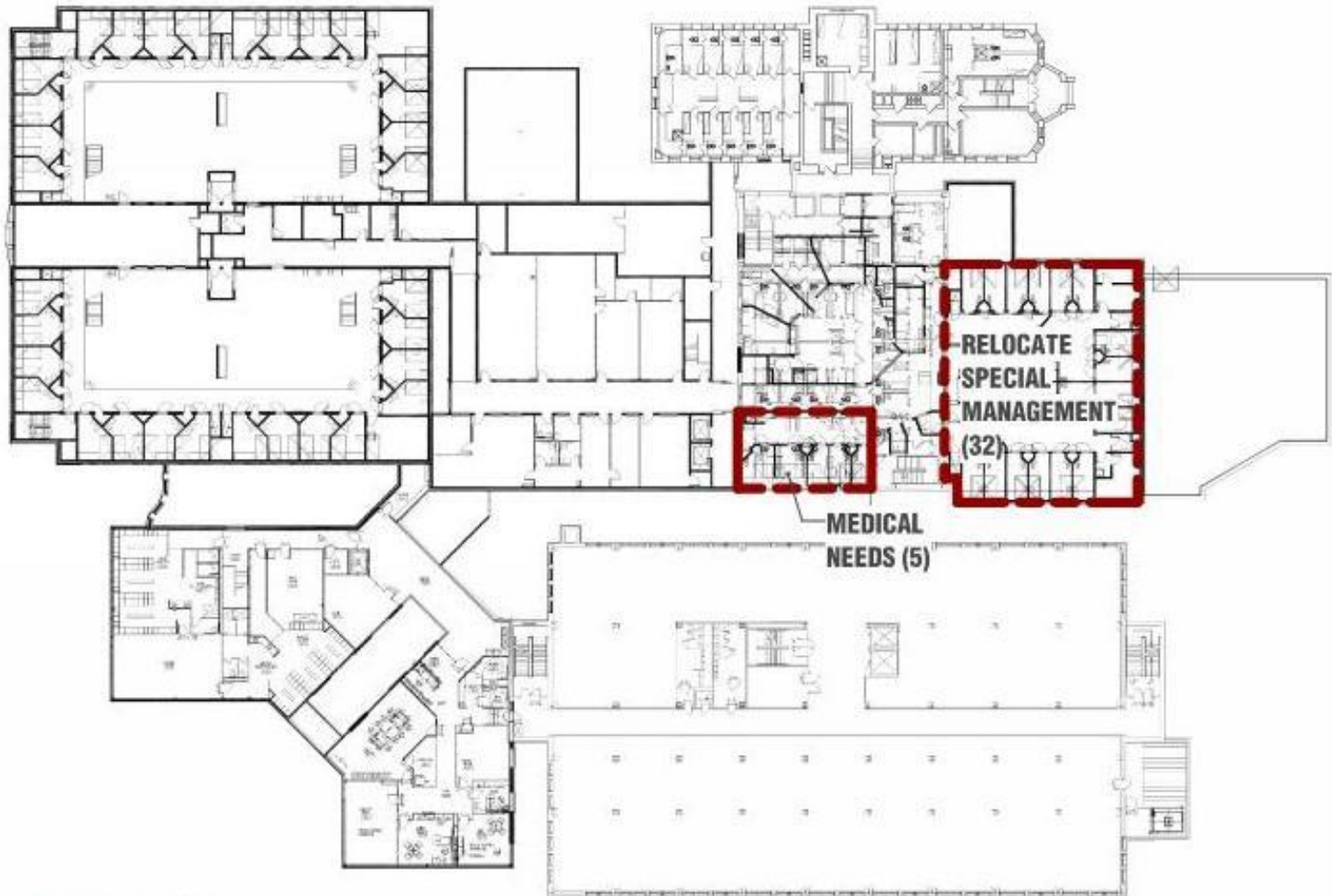




JDC/Jail Assessment

SHORT TERM JAIL OPTION- A

Renovations Upper Level

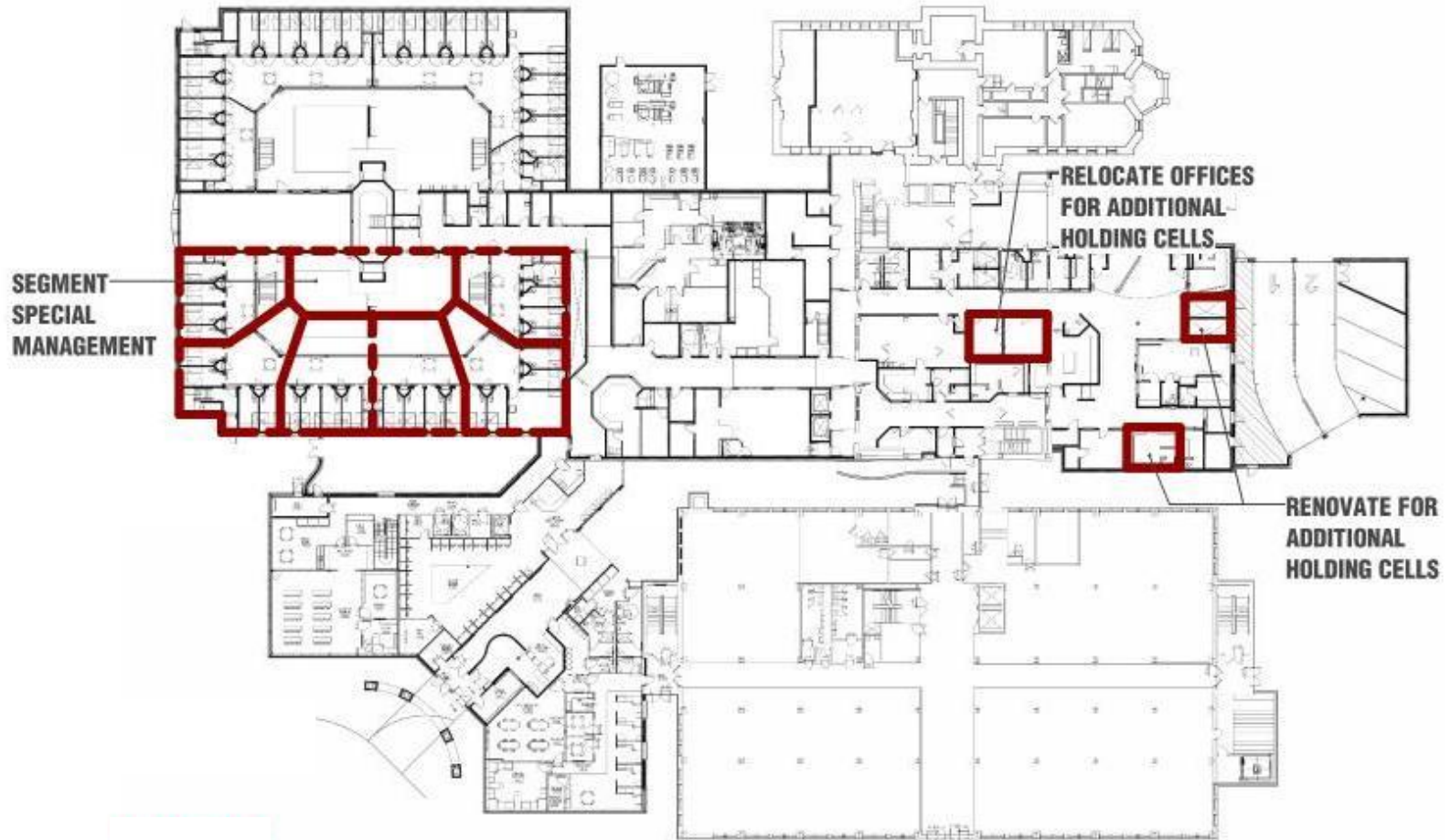




JDC/Jail Assessment

SHORT TERM JAIL OPTION- B

Renovations Main Level

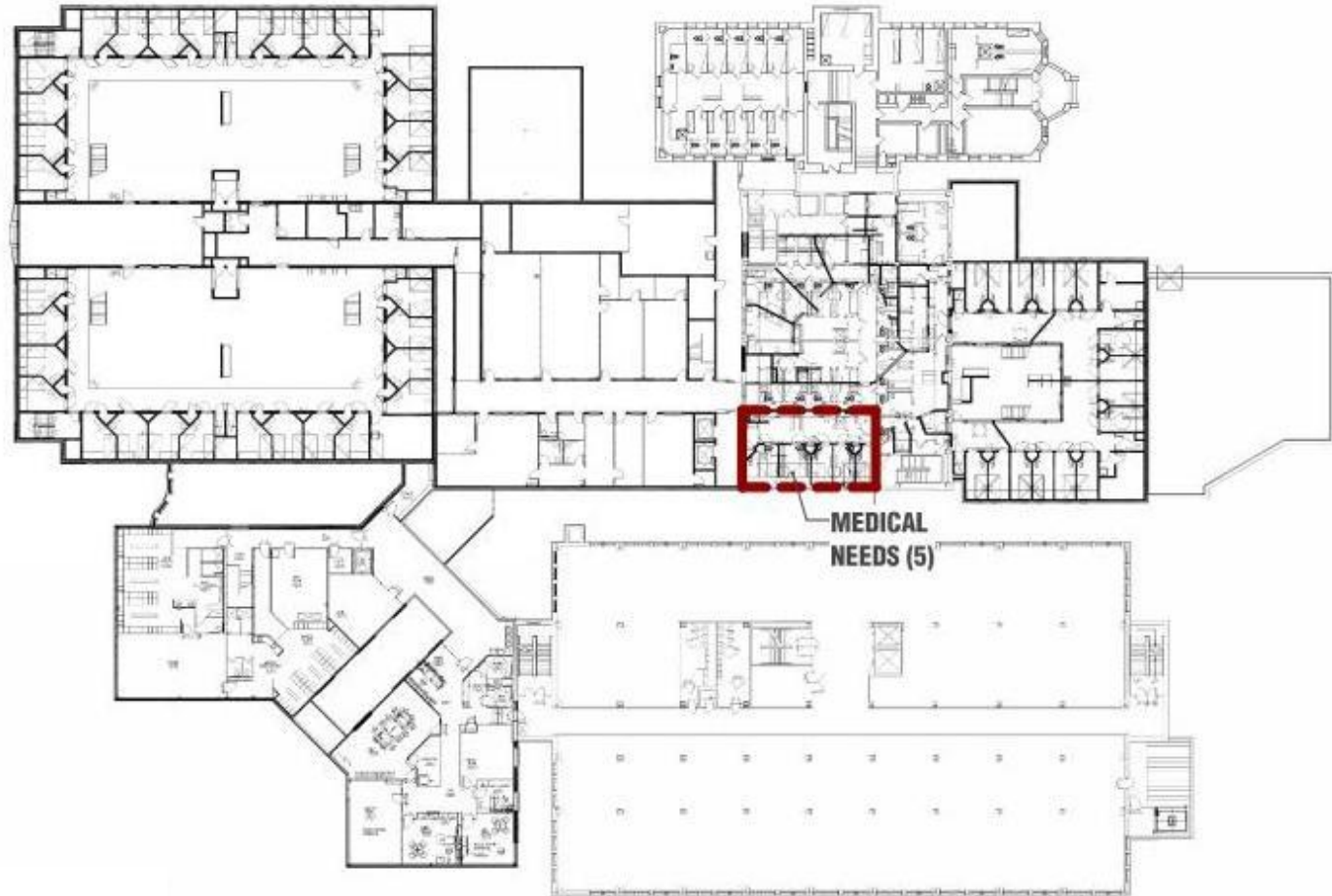




JDC/Jail Assessment

SHORT TERM JAIL OPTION- B

Renovations Upper Level





JDC/Jail Assessment

OPTIONS COST ESTIMATE MATRIX

Total Project Cost Estimate Summary (Rounded Up)

	JDC	Jail	Total
Option 1 JDC & Jail Addition (Separate)	\$16,322,0000	\$11,927,000	\$28,250,000
Option 2 Combined Jail/JDC Addition	\$23,952,000	\$12,815,000	\$36,767,000
Recommendations	Option 3 Jail Addition and New JDC Offsite	\$23,299,000	\$37,848,000
	Option A & B Renovations to Jail	–	\$6,591,000

TOTAL JDC OPTION 3 AND JAIL OPTION B = \$30,543,000



CORE PLANNING GROUP RECOMMENDATIONS

I. Start a budgeting / planning process for replacing the JDC (option 3)

- Allows for Jail to expand (long term) on current site
- JDC can build a single story structure for preferred supervision model
- JDC can be designed to be more operationally efficient and energy efficient than adding onto existing facility
- It can be built specifically for their needs and planned for future capacity

I. Begin the planning and design process for the short term jail renovations- Option B.

- Opportunity to refine current and future operations until future housing needs can be funded
- Solves immediate challenges of special management and booking areas
- Renovations will allow for better separations of various classifications (increasing safety and security for staff and inmates)



JDC/Jail Assessment

QUESTIONS?

THANK YOU!