

A photograph of a pond filled with lily pads and yellow water lilies. The water is calm, reflecting the sky and the plants. In the background, there is a line of trees under a clear sky. The text is overlaid on the center of the image.

Water Quality

healthy water, strong communities

Presented by Partners of Scott County Watersheds

What is Water Quality?

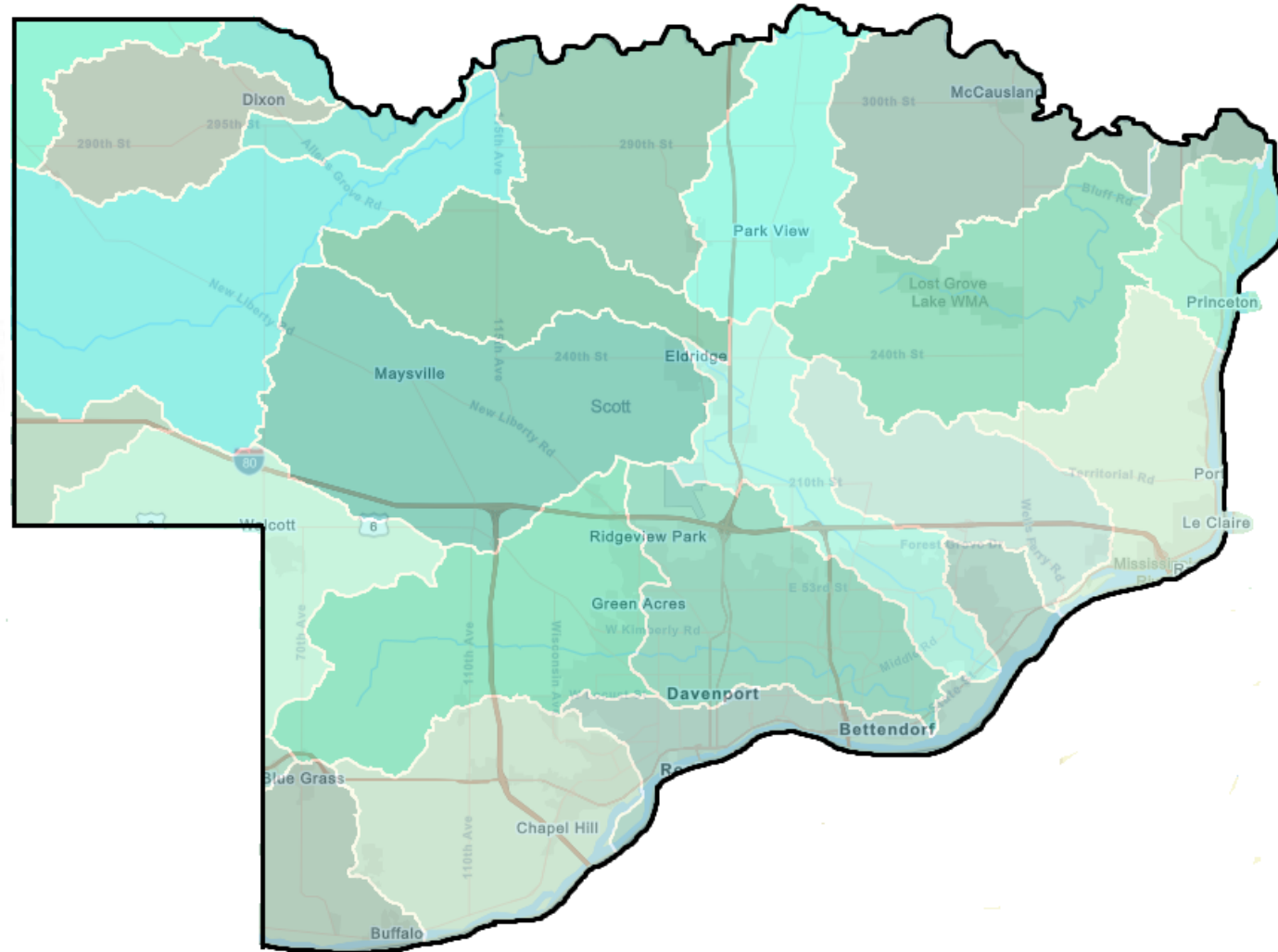
the health & suitability of water for a particular use

based on physical, chemical, and biological characteristics

- color
- odor
- transparency
- pH
- nitrogen
- chloride
- dissolved oxygen
- organisms

Water Quality & Watersheds

A watershed is an area of land that drains water to a particular stream, river, lake, or wetland.



Why is Water Quality Important?

Healthy water contributes to...


Human, Plant, & Animal Health

- Drinking water
- Cooking & cleaning
- Plant growth
 - Photosynthesis, producing oxygen
- Habitat & nutrients for animals

Recreation Opportunities

- Swimming
- Fishing
- Paddling
- Wadding/stomping
- Hiking/exploring
- Wildlife viewing

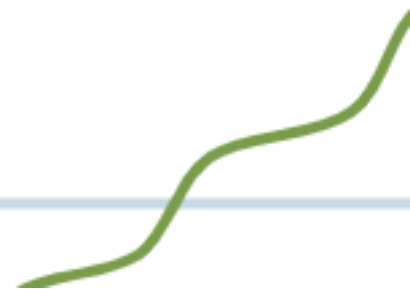
Global & Local Economy

- Product transportation
 - Crop irrigation
 - Fish industry
 - Tourism
- 



Threats to Water Quality

both rural and urban living can pollute our watersheds

- Pesticides
 - Herbicides
 - Fungicides
 - Trash/ litter
 - Animal waste
 - Urban runoff
 - Fertilizers/ nutrients
 - Sediments
 - Industrial waste
- 

Ways to Improve Water Quality

1. Wash your car at a car wash
2. Pick up after your pet
3. Sweep your driveway instead of hosing down
4. Avoid fertilizers with phosphorus
5. Do not flush medication down the toilet
6. Take hazardous materials/chemical to a recycling center
7. Avoid using antibacterial soaps
8. Use a rain barrel to collect and recycle water



Improve Water Quality with PSCW

Join Partners of Scott County Watersheds in improving the health of our local watersheds

Who is PSCW?

- A non-profit organization focused on improving water quality & reducing flooding
- 16 Board members representing multiple municipalities & agencies in Scott County
 - Includes Cities of Davenport, Bettendorf, and Eldridge
 - Scott County Conservation
 - Scott County Board of Supervisors
 - Iowa DNR
 - Nahant Marsh
 - Iowa American Water
 - Individual farmers and city residents



What does PSCW do?

Education

- Free monthly forums
- Technical workshops
- Provide outreach for community events and school programs
- Help implement studies and research for St. Ambrose, WIU, and Augustana
- Annual newsletter
- Provide internship for college students in Envr. field

Volunteer Opportunities

- Work with communities for trash cleanups, invasive species removal, habitat improvement, and more
- Set up and implement Crow Creek WMA restoration events
- Adoption of Crow Creek WMA, partnering with IA DNR

Technical Guidance

- Develop interactive watershed & water quality online map
- Analyzes & interpret water quality data to determine areas of concern and relays to public
- Conduct specialized analyses for fecal DNA, pesticides, herbicides
- Conducts site visits to residents regarding erosion and water quality concerns
- Implementing cutting edge practices to remediate WQ issues

Improve Water Quality & Get Involved!

Join Partners of Scott County Watersheds in improving the health of our local watersheds

- Become a Member
- Donate!
- Attend an educational forum
- Join a community cleanup
 - Aug. 21: Princeton
 - Sept. 25: LeClaire
 - Crow Creek WMA- TBD
- Volunteer for Snapshot- Oct. 5
- Be a good water steward!

Partners of Scott County Watersheds



Water Quality Month

**Reminds us to appreciate our water resources, and
consider the role it plays in our communities**