

- Reprecincting**
- ▭ State Senate Boundary
 - ▭ State House Boundary
 - ▭ Precinct Boundary

Current Rural Precincts



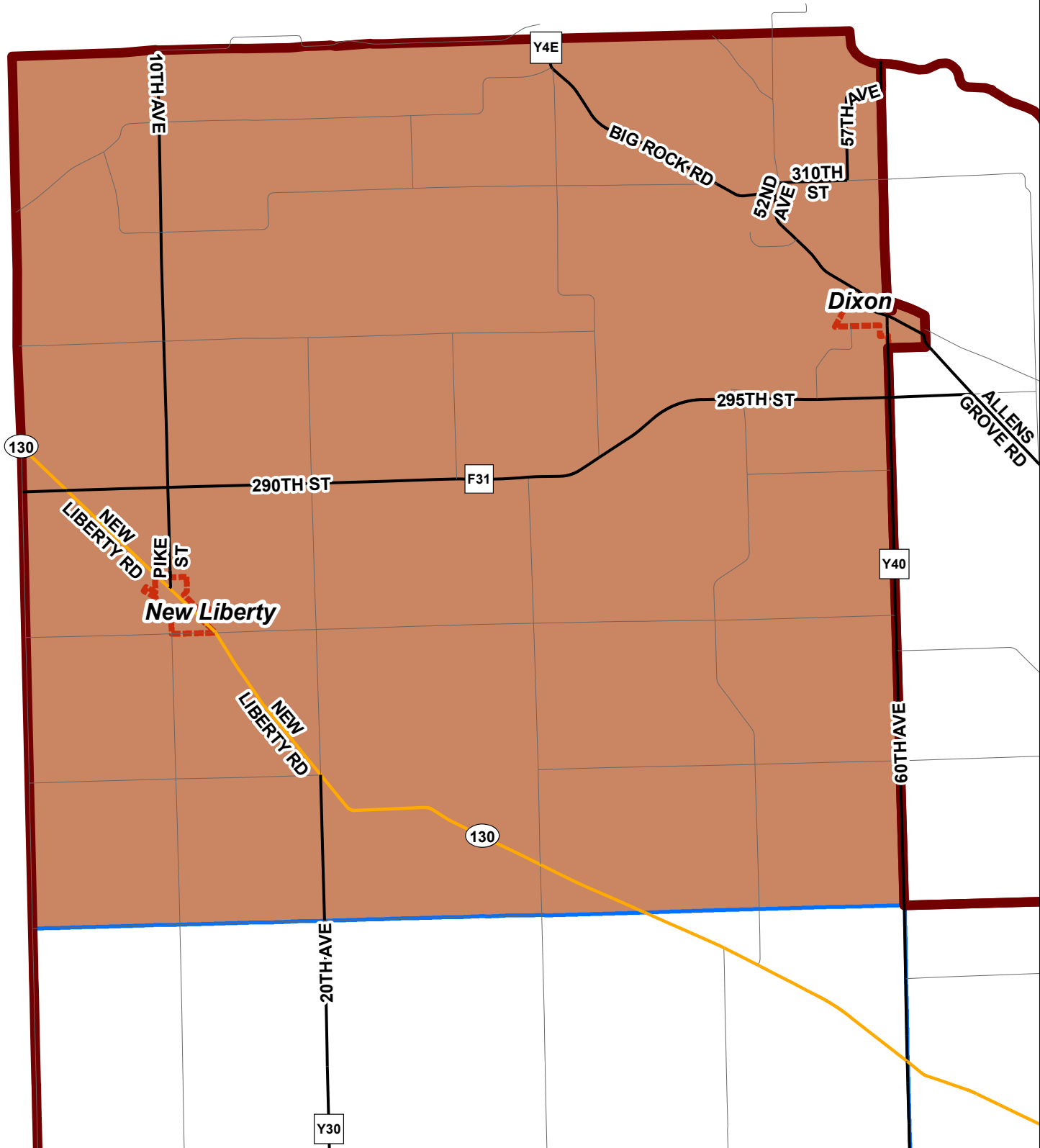
Scott County Auditor's Office
2011 Census Precincts
Scott County Rural Precincts



Scott County Auditor's Office
2021 Reprecincting
 Precinct: Liberty TWP

Proposed

Population: 760

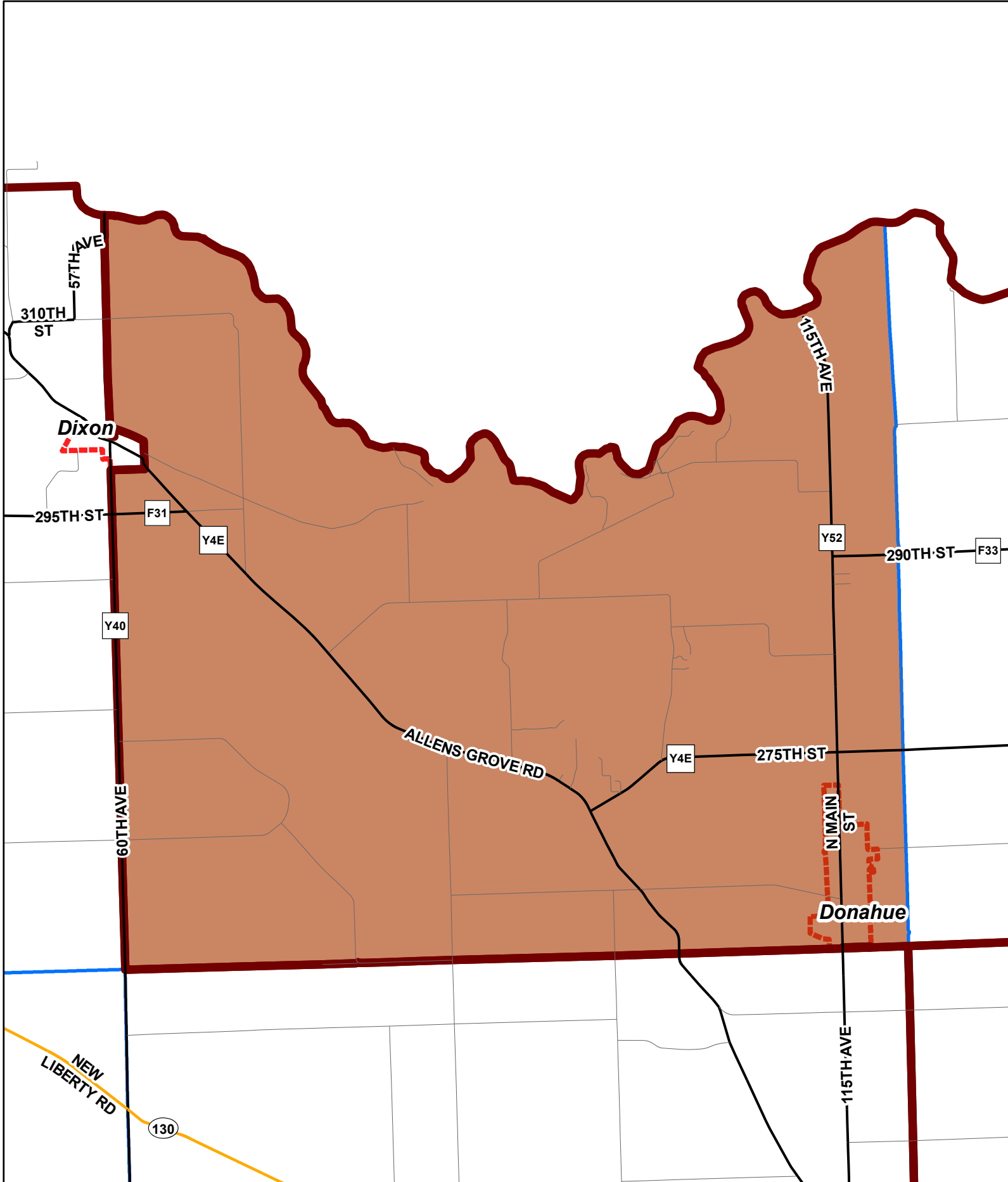




Scott County Auditor's Office
2021 Reprecincting
 Precinct: Allen's Grove TWP

Proposed

Population: 857

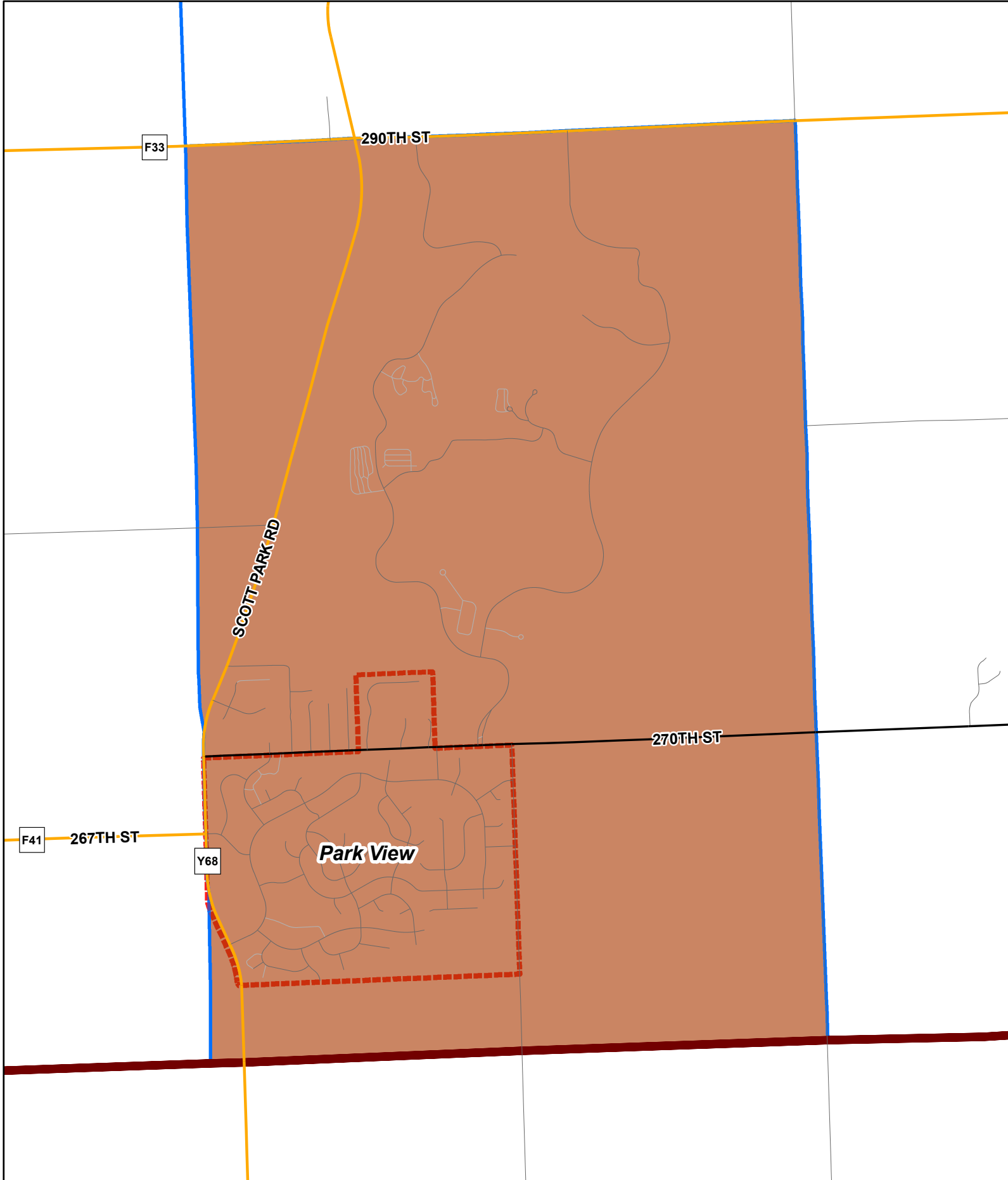




Scott County Auditor's Office
2021 Reprecincting
Precinct: Park View

Proposed

Population: 2,773

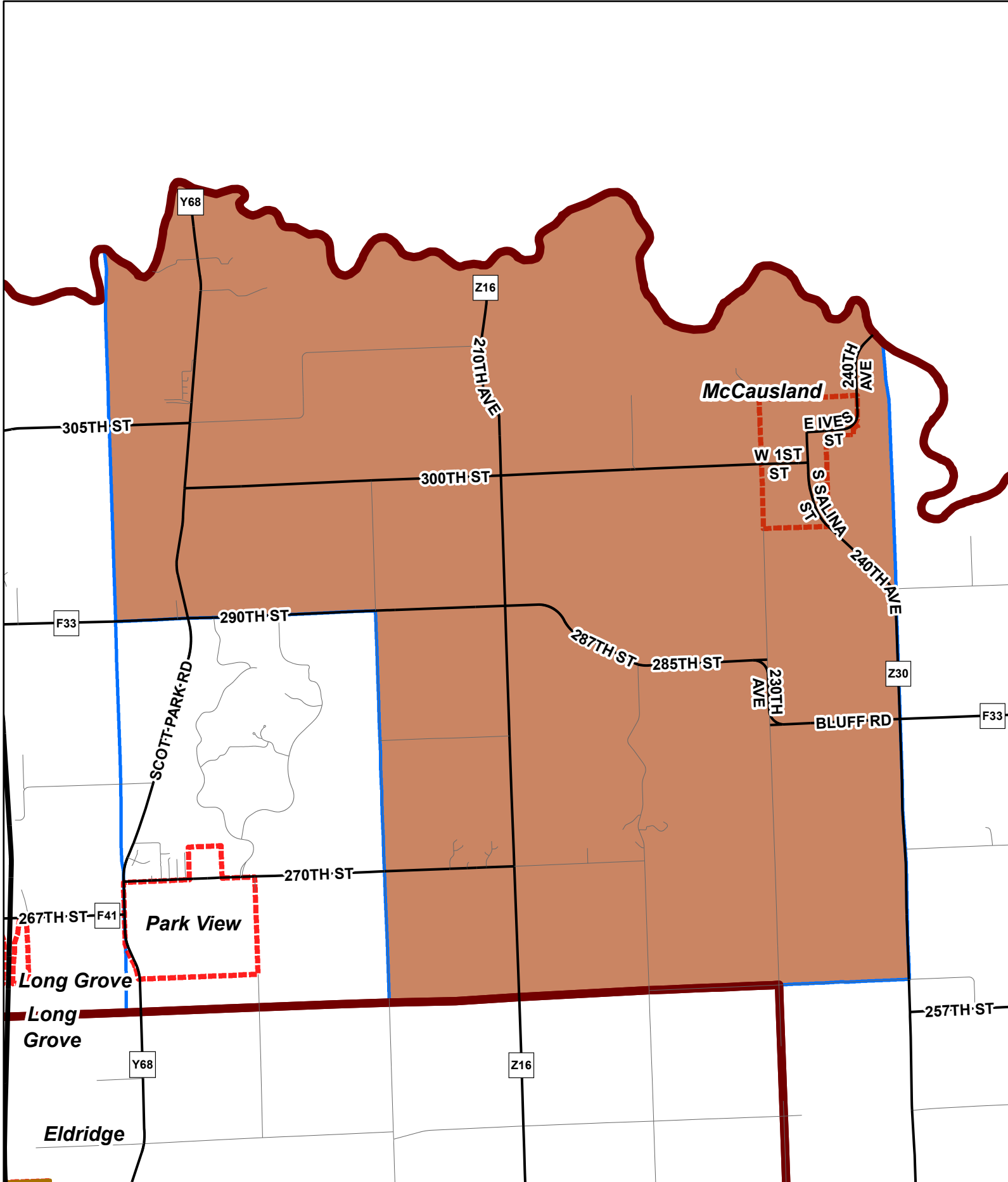




Scott County Auditor's Office
2021 Reprecincting
Precinct: McCausland

Proposed

Population: 994

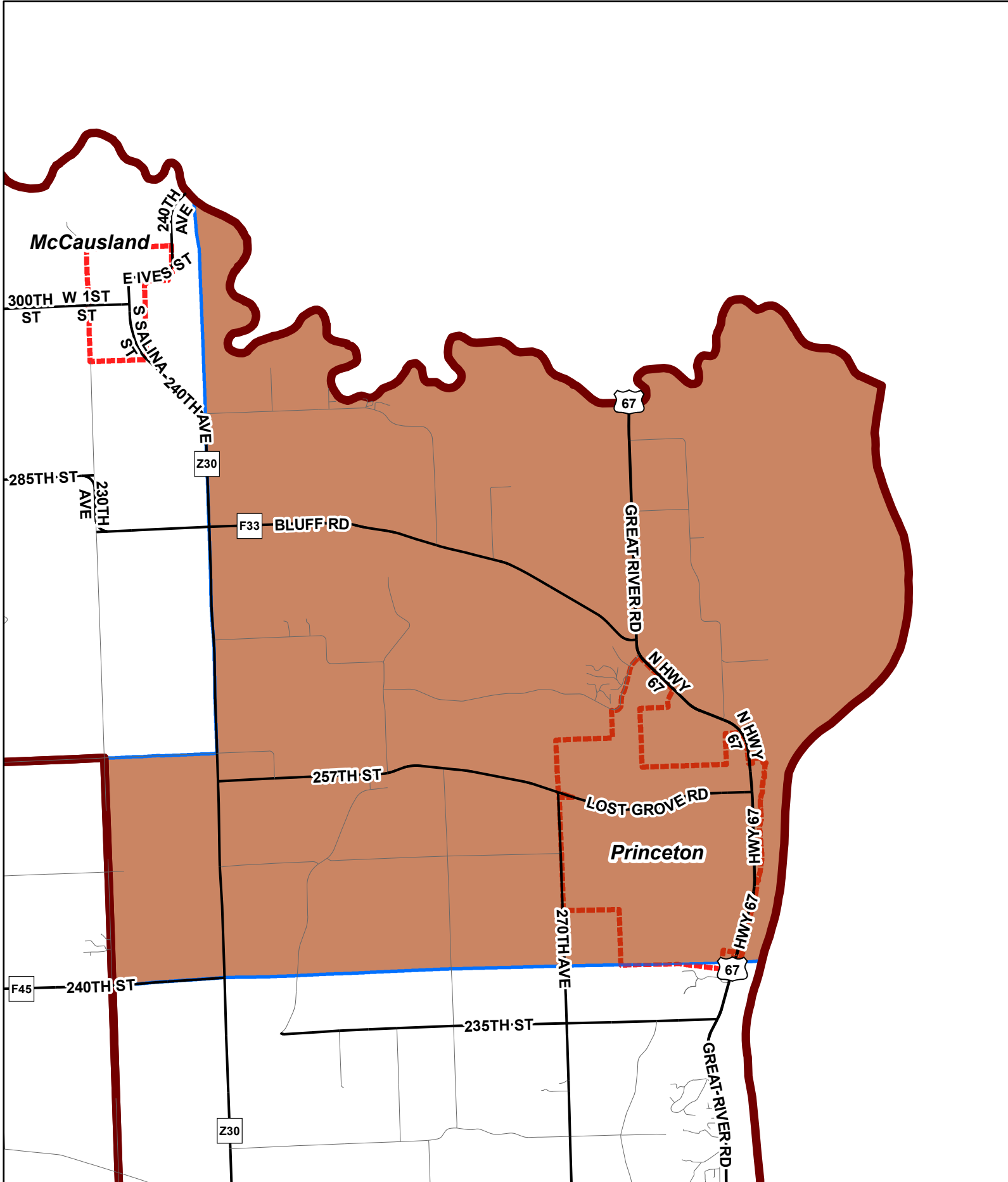




Scott County Auditor's Office
2021 Reprecincting
 Precinct: Princeton TWP

Proposed

Population: 1,387

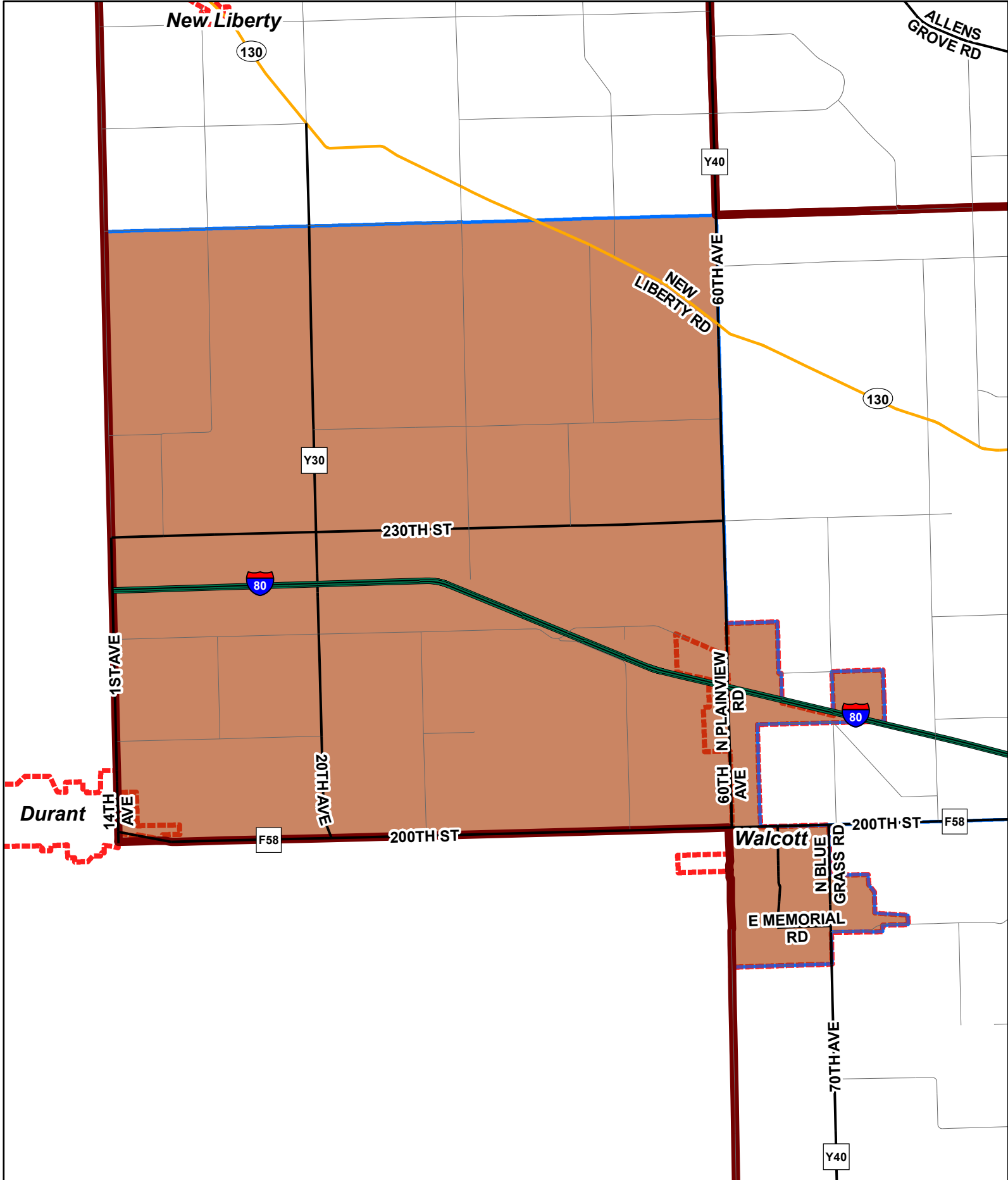




Scott County Auditor's Office
2021 Reprecincting
Precinct: Walcott

Proposed

Population: 1,970

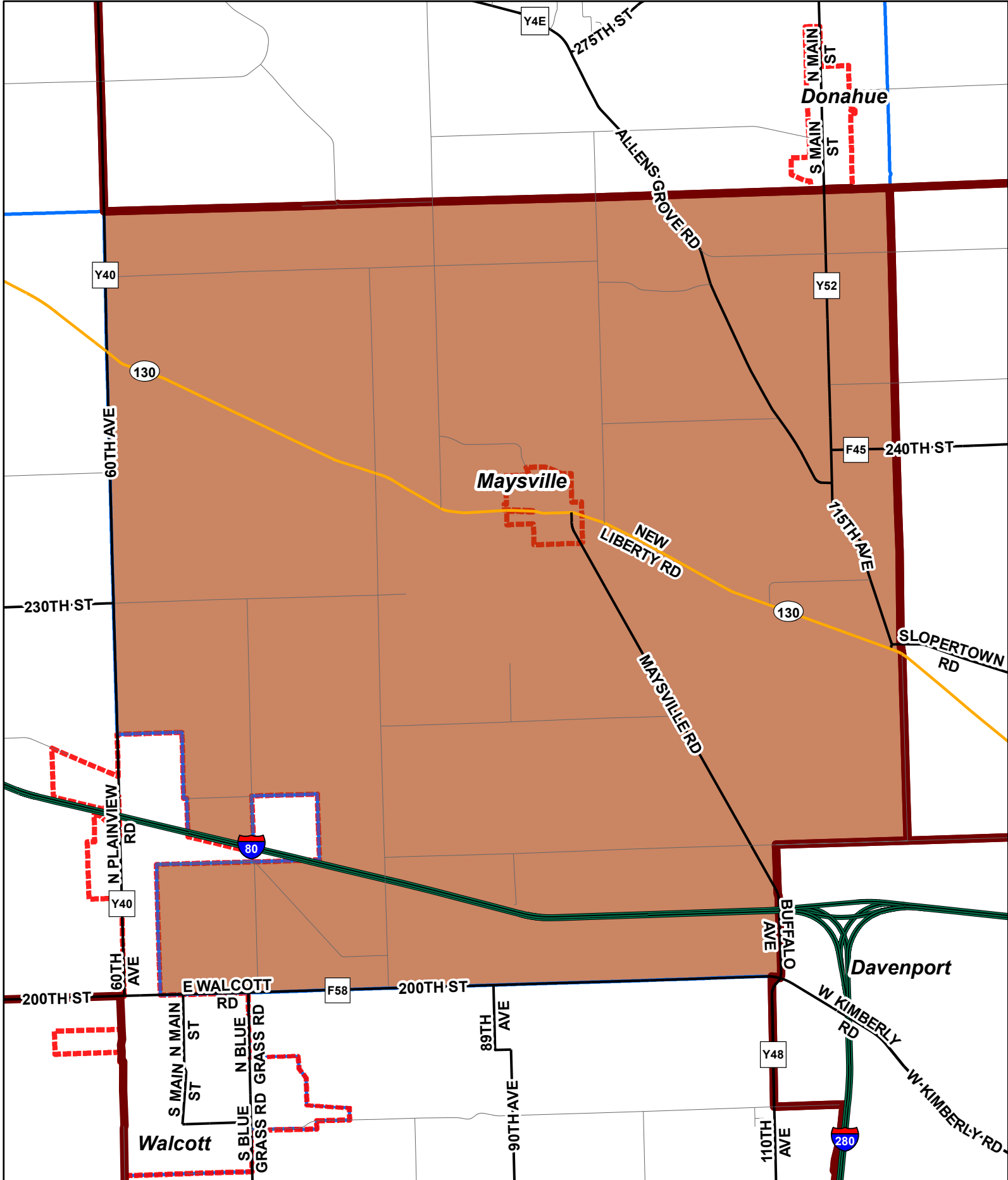




Scott County Auditor's Office
2021 Reprecincting
Precinct: Hickory Grove TWP

Proposed

Population: 627

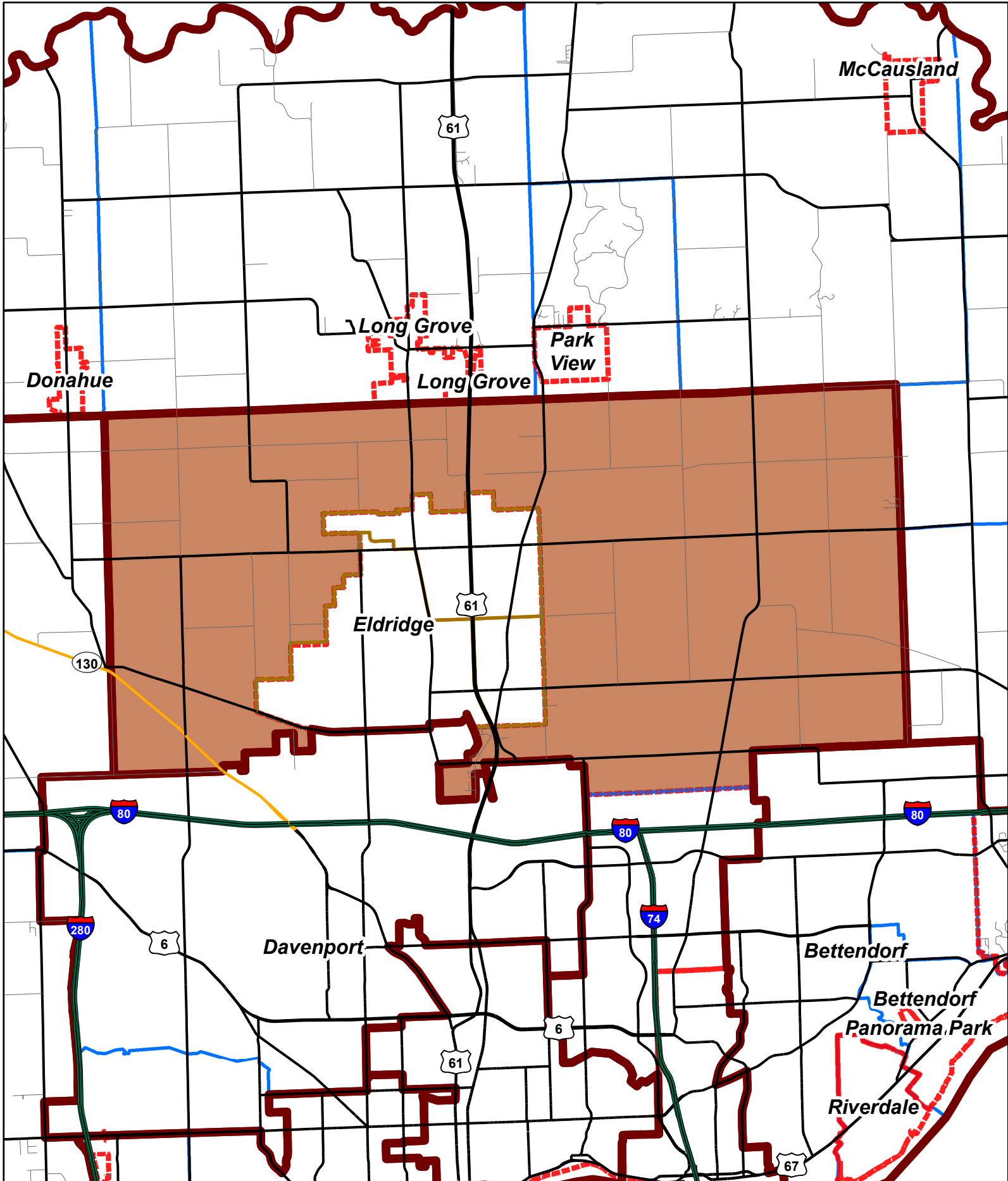




Scott County Auditor's Office
2021 Reprecincting
Precinct: Lincoln-Sheridan TWP

Proposed

Population: 966

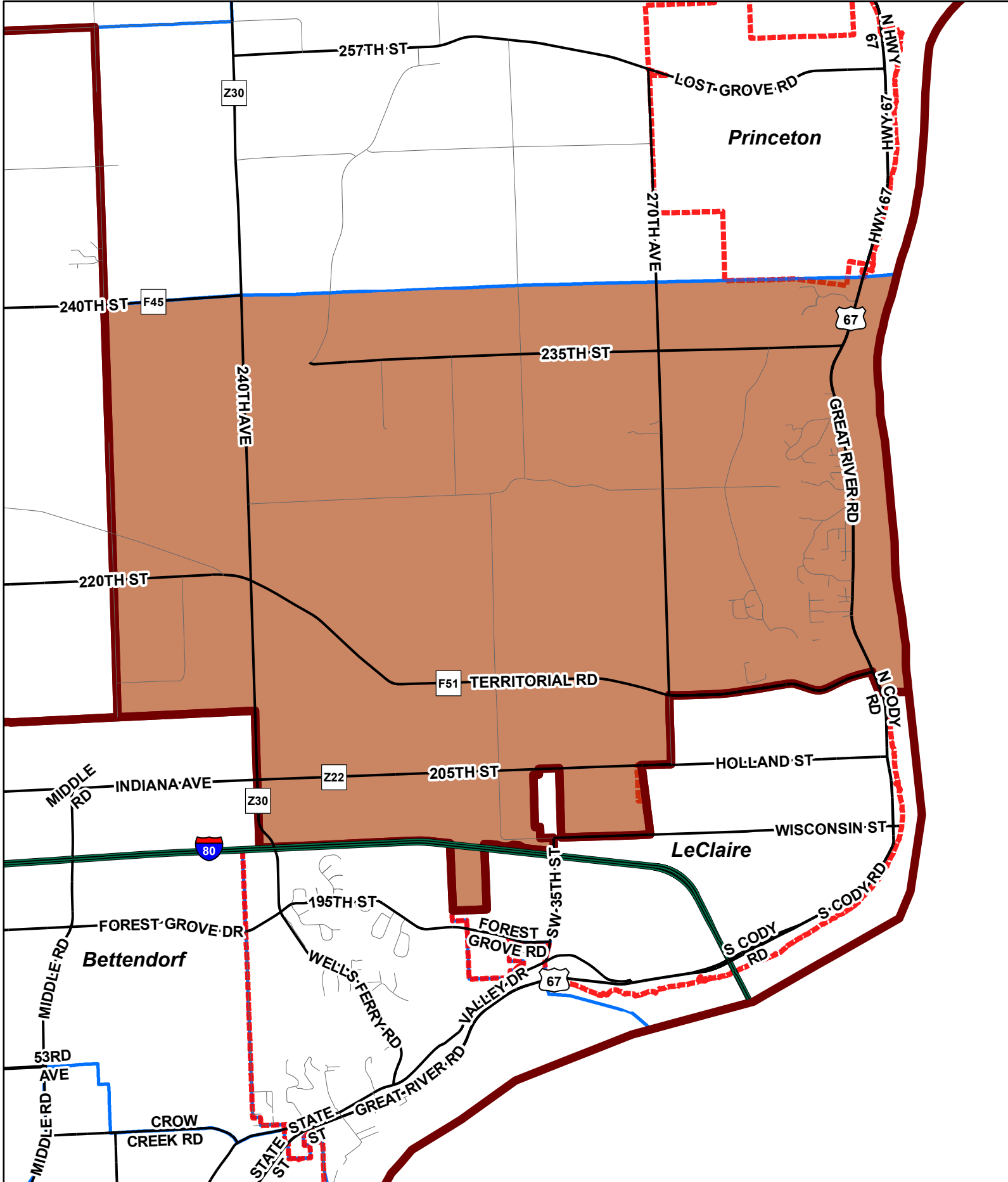




Scott County Auditor's Office
2021 Reprecincting
Precinct: LeClaire TWP

Proposed

Population: 1,458

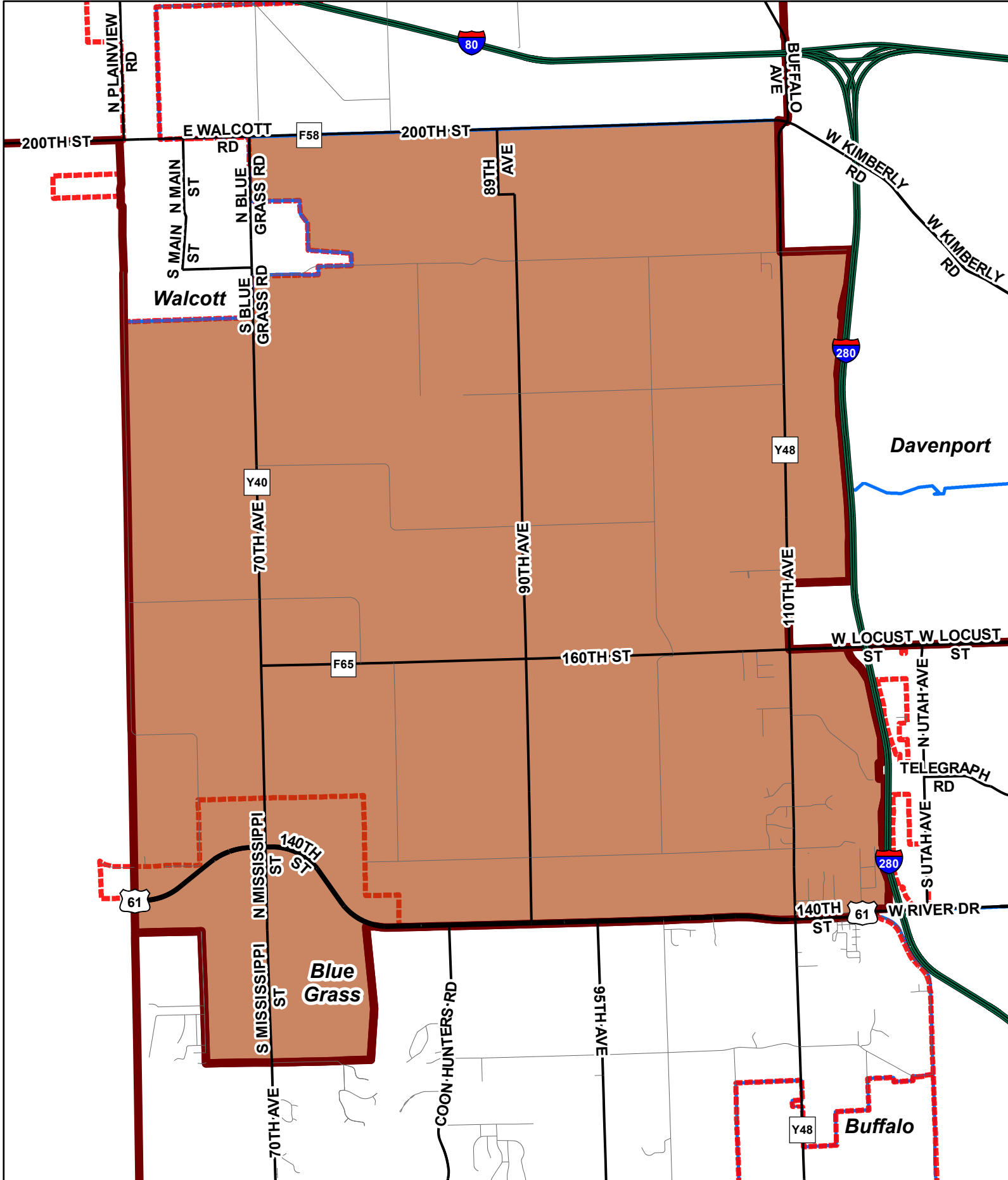




Scott County Auditor's Office
2021 Reprecincting
Precinct: Blue Grass TWP

Proposed

Population: 2,752

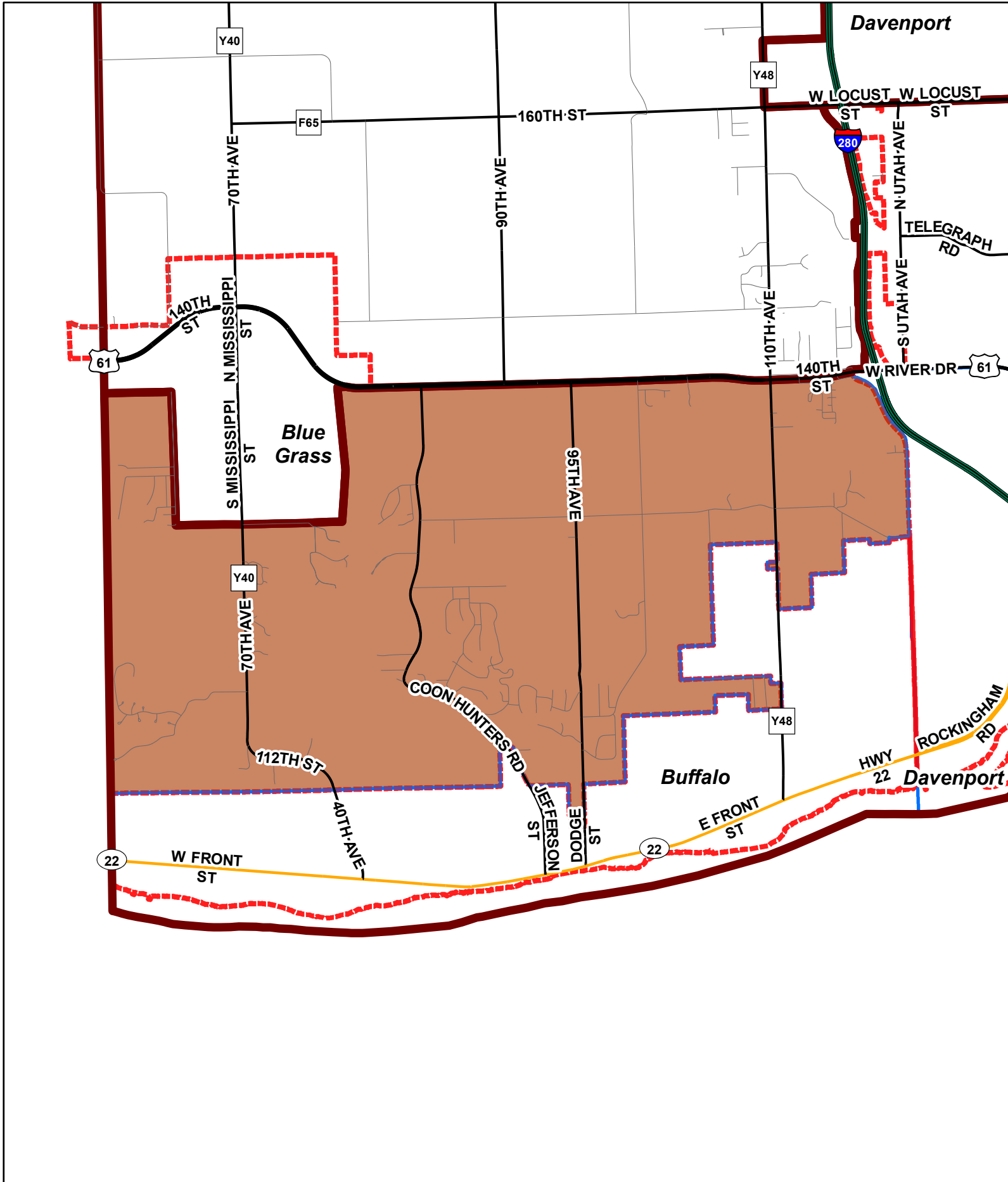




Scott County Auditor's Office
2021 Reprecincting
Precinct: Buffalo TWP

Proposed

Population: 2,982

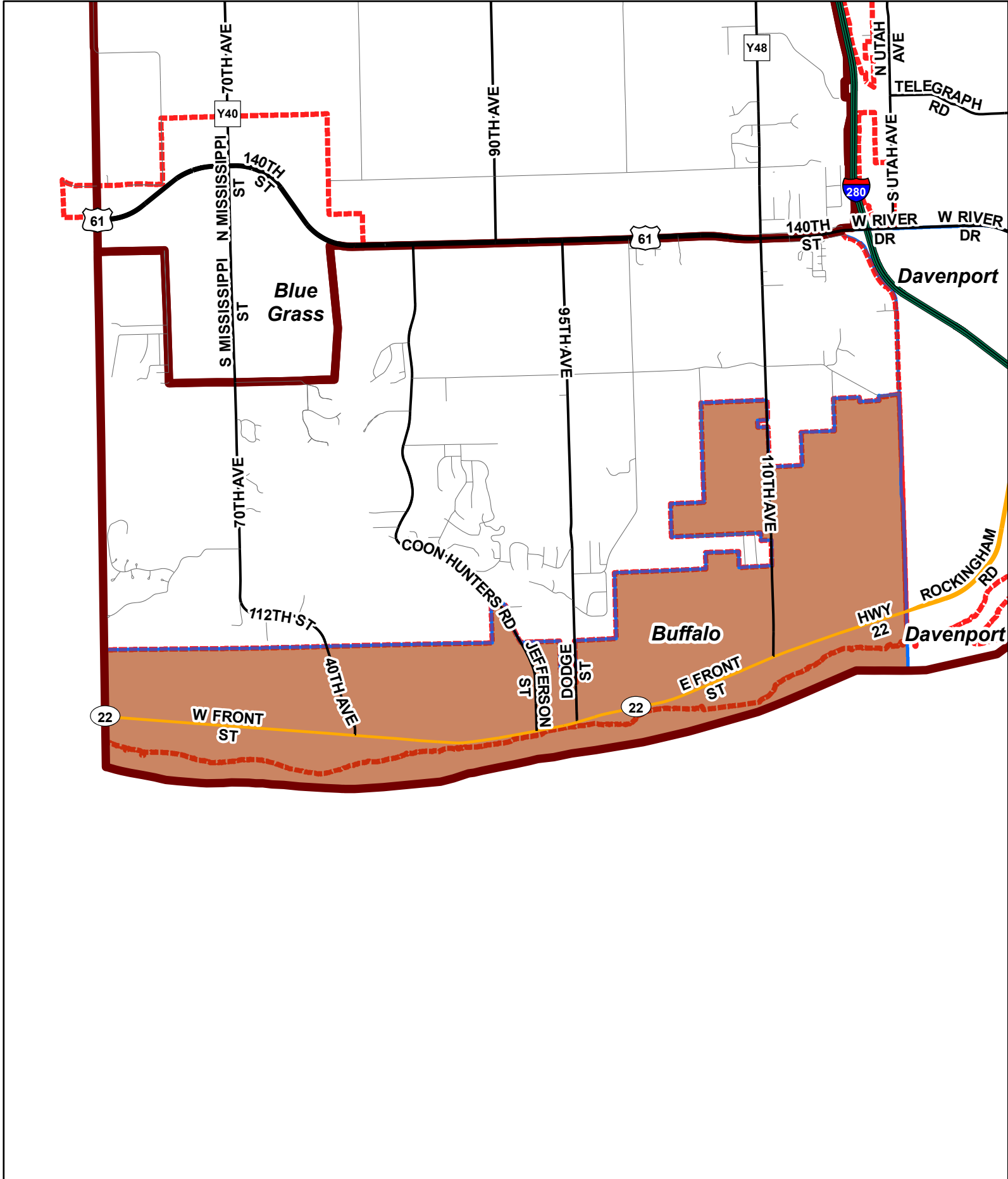




Scott County Auditor's Office
2021 Reprecincting
Precinct: Buffalo

Proposed

Population: 1,194

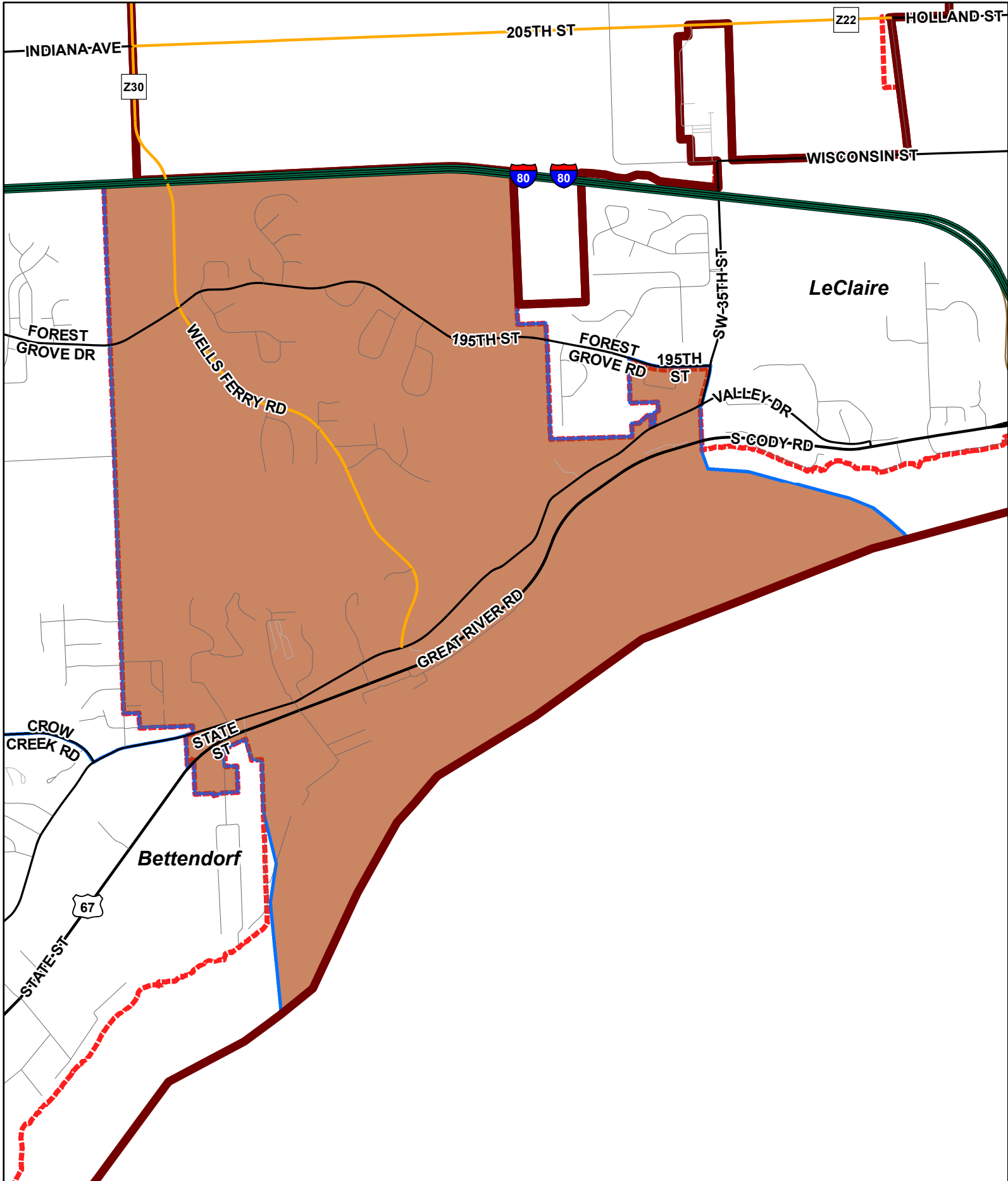




Scott County Auditor's Office
2021 Reprecincting
Precinct: Pleasant Valley TWP

Proposed

Population: 1,402





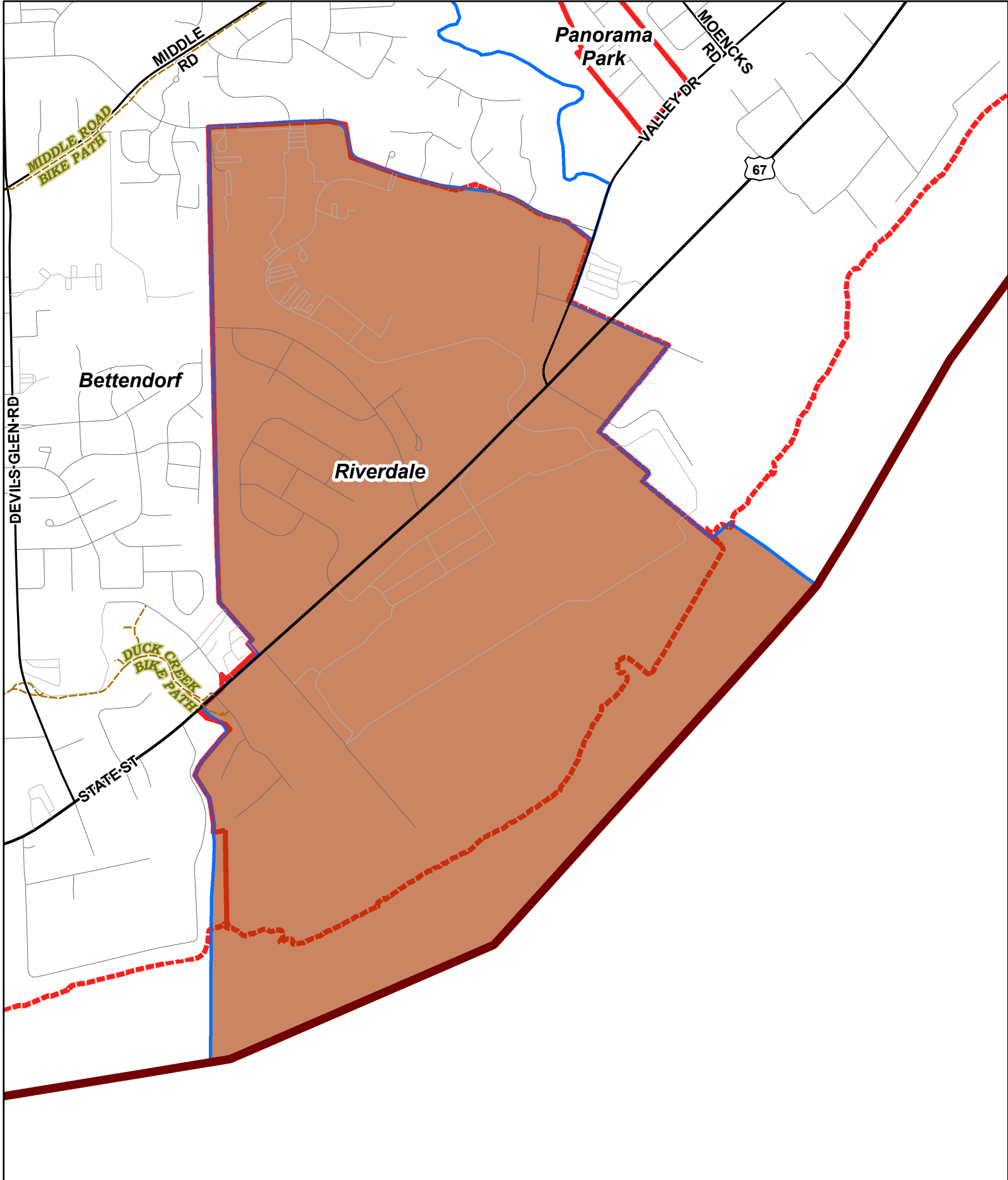
Scott County Auditor's Office

2021 Reprecincting

Precinct: Riverdale

Proposed

Population: 379

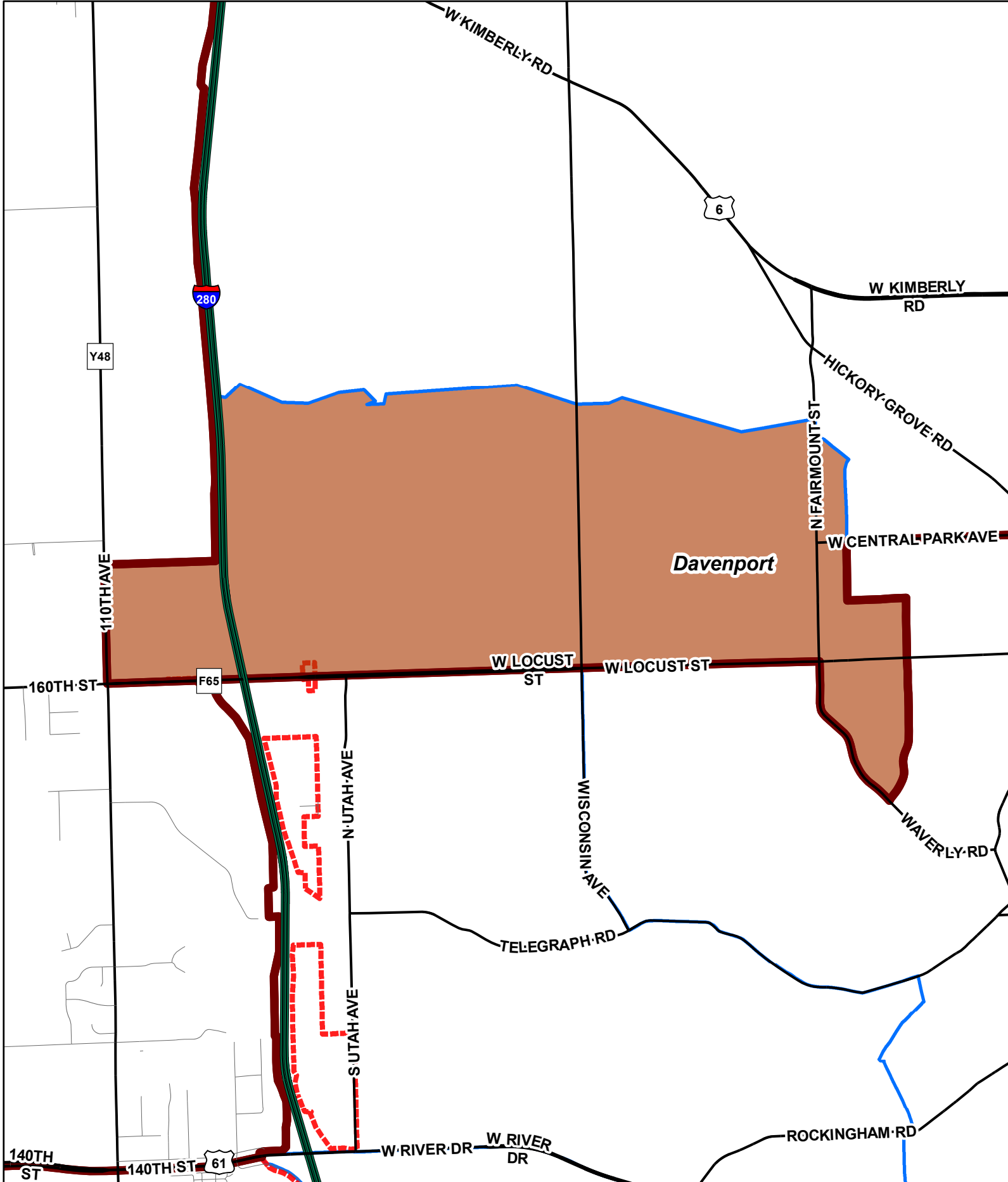




Scott County Auditor's Office
2021 Reprecincting
 Precinct: Dav W1 P1

Proposed

Population: 3,286

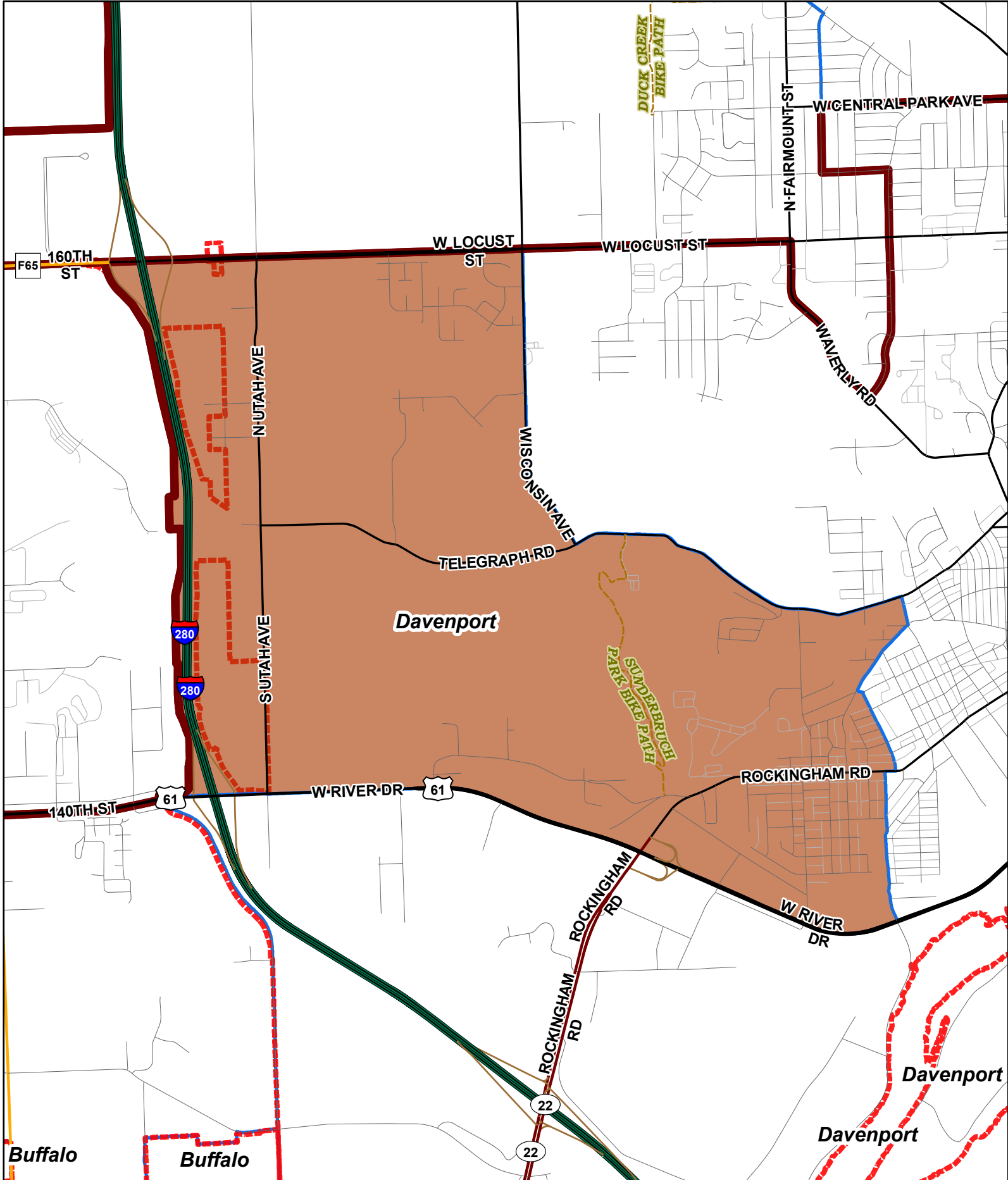




Scott County Auditor's Office
2021 Reprecincting
 Precinct: Dav W1 P3

Proposed

Population: 3,218

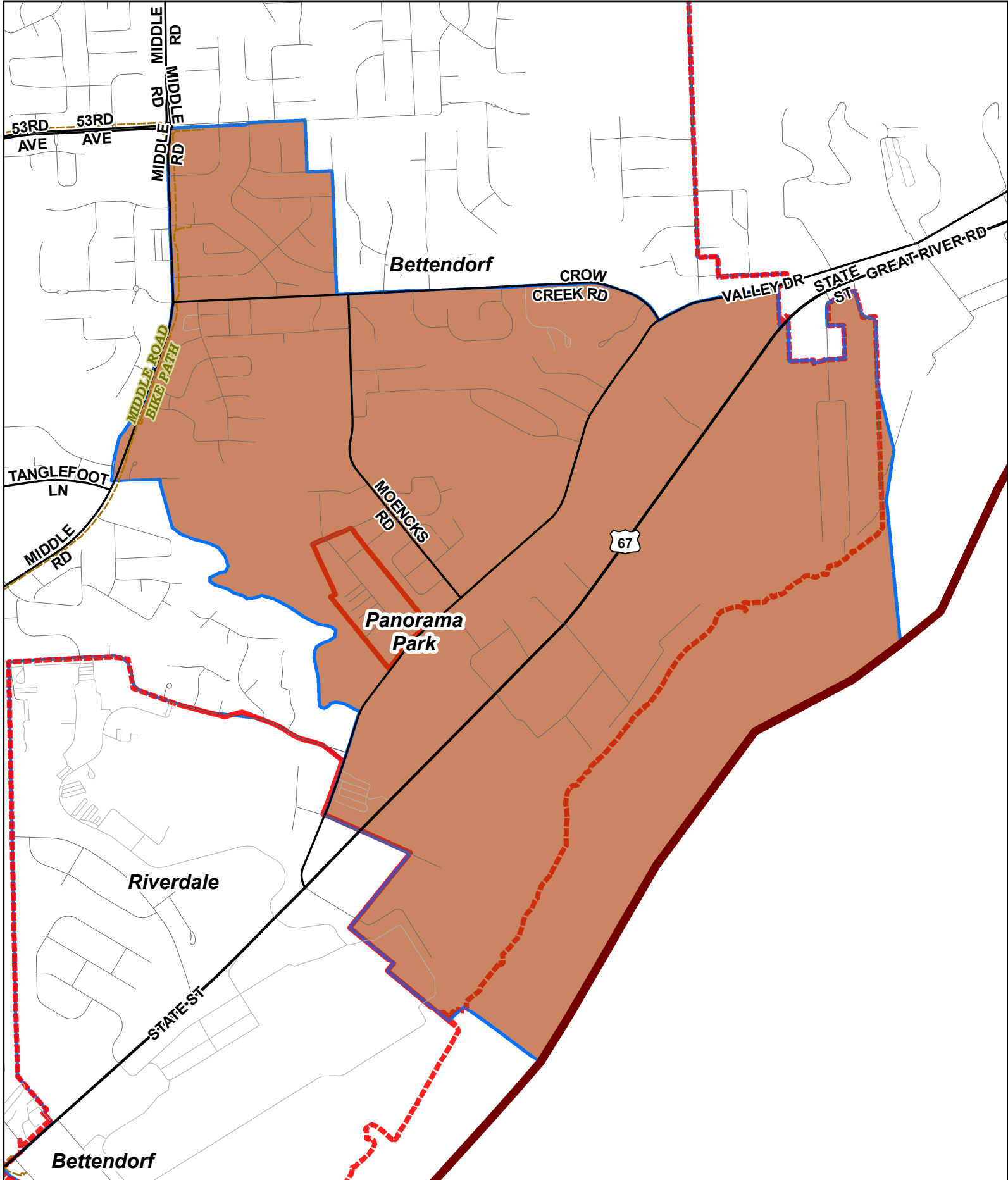


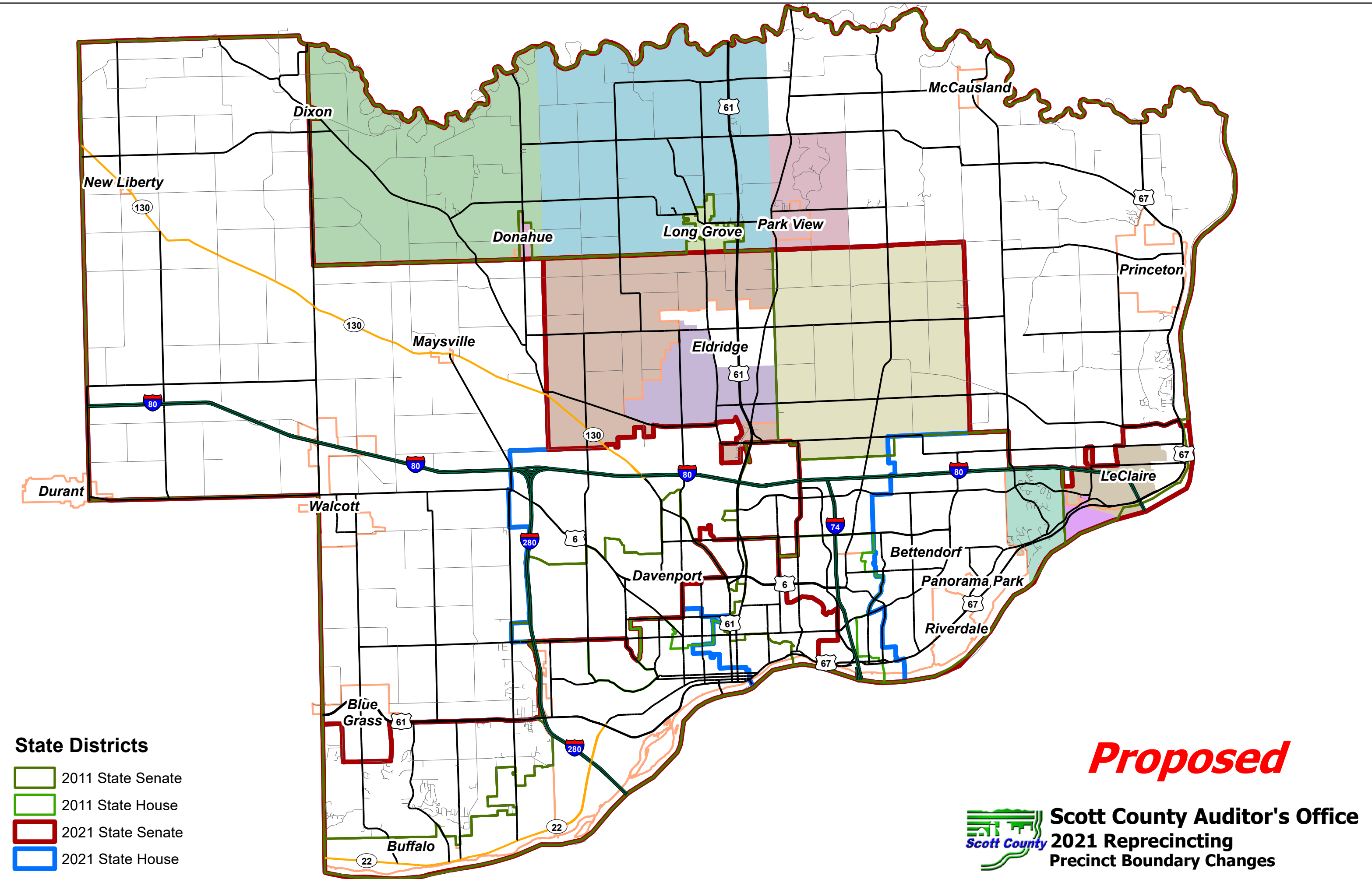


Scott County Auditor's Office
2021 Reprecincting
Precinct: Bett W5 P1

Proposed

Population: 2,670





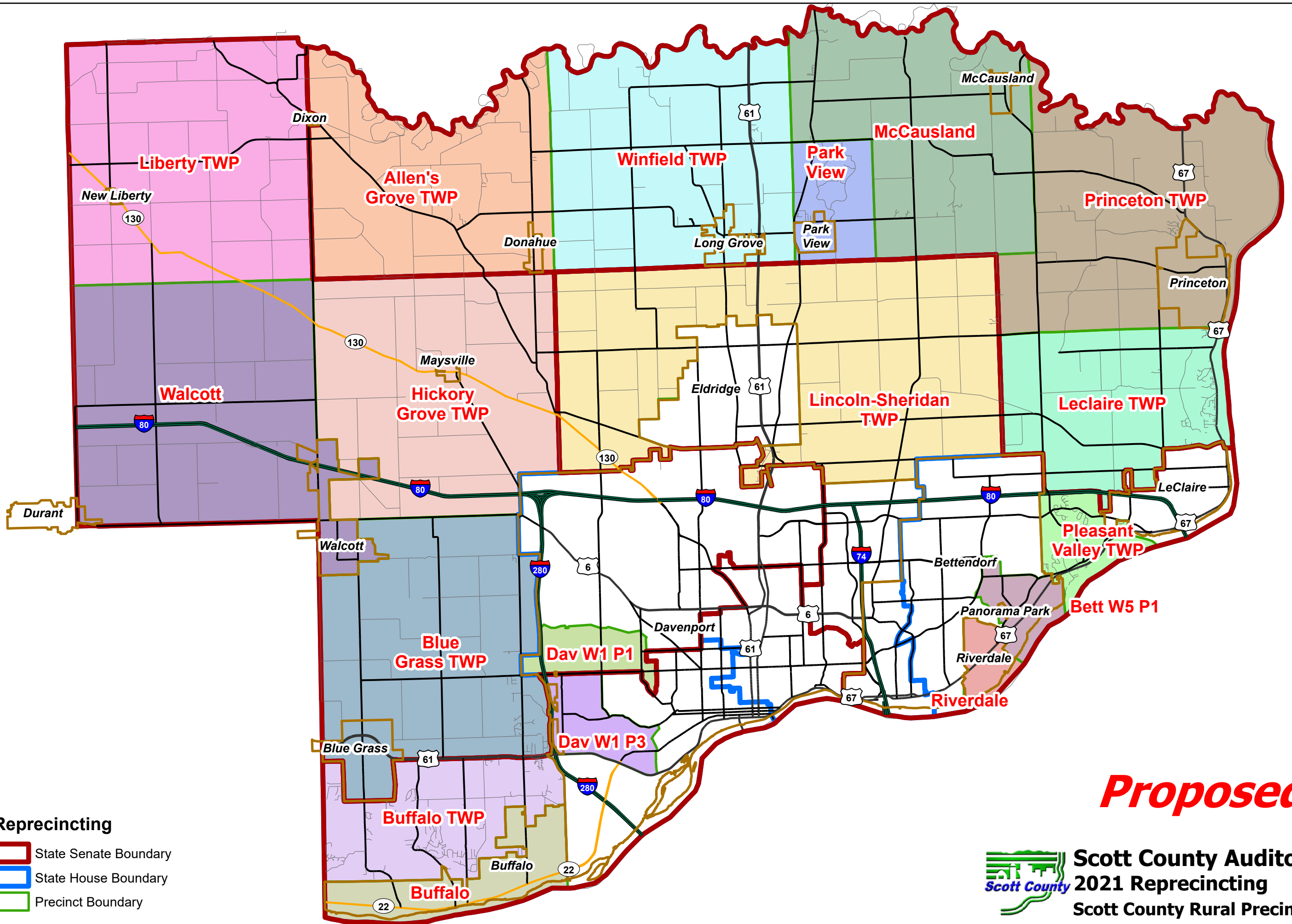
State Districts

- 2011 State Senate
- 2011 State House
- 2021 State Senate
- 2021 State House

Proposed



Scott County Auditor's Office
2021 Reprecincting
Precinct Boundary Changes



- Reprecincting**
- State Senate Boundary
 - State House Boundary
 - Precinct Boundary

Proposed



Scott County Auditor's Office
2021 Reprecincting
Scott County Rural Precincts