

Potential Sites

- 200 E Kimberly Rd: 2.84 Acres  
Owner: Green State Credit Union (Land behind Green State Credit Union at Kimberly & Brady)  
2021 Assessment: 1,045,310 Commercial

<https://beacon.schneidercorp.com/Application.aspx?AppID=1024&LayerID=21532&PageTypeID=4&PageID=9191&Q=148615018&KeyValue=P1308A02>

Former Toys R Us is now demolished



- 5202 Brady Street: 7.18 acres  
Owner: Jay Shreeji 1 LLC  
2021 Assessment: 1,400,000 – Commercial.

<https://beacon.schneidercorp.com/Application.aspx?AppID=1024&LayerID=21532&PageTypeID=4&PageID=9191&Q=566264417&KeyValue=P1209-03A>

Hotel is now demolished



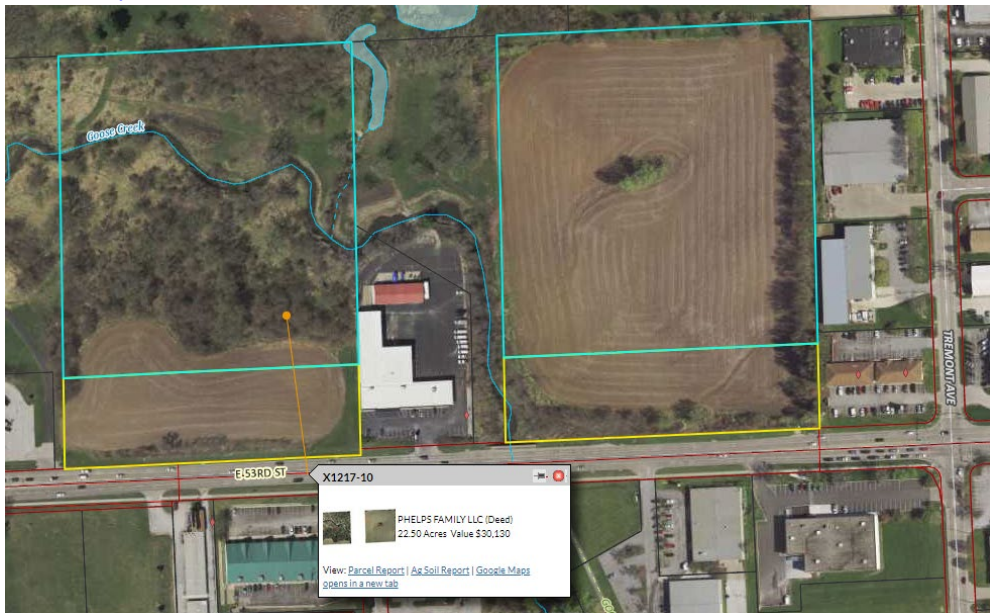
- Parcel X1203-01: 10.17 Acres  
Owner: Humane Society of Scott County  
2021 Assessment: \$16,770 – Agriculture –

<https://beacon.schneidercorp.com/Application.aspx?AppID=1024&LayerID=21532&PageTypeID=4&PageID=9191&Q=1019109807&KeyValue=X1203-01>

North of 53<sup>rd</sup> and West of Tremont



- Parcels X1217-12 & X1217-10: 28.8 Acres Between both parcels and frontage on E 53<sup>rd</sup> Street  
Owner Phelps Family LLC  
2021 Assessment - \$9,310 – Agriculture – Topography questions? Soil issues (just south of Tremont from above).  
2021 Assessment - \$30,130 – Agriculture - Topography questions? Soil issues (just south of Tremont from above).  
<https://beacon.schneidercorp.com/Application.aspx?AppID=1024&LayerID=21532&PageTypeID=4&PageID=9191&Q=987666046&KeyValue=X1217-12>  
<https://beacon.schneidercorp.com/Application.aspx?AppID=1024&LayerID=21532&PageTypeID=4&PageID=9191&KeyValue=X1217-10>



- Parcel X0155-27F: 3.0 Acres  
Owner: Wood Development LLC  
2021 Assessment: \$7,540 Agriculture;  
Acreage size too small?

<https://beacon.schneidercorp.com/Application.aspx?AppID=1024&LayerID=21532&PageTypeID=4&PageID=9191&Q=1211614411&KeyValue=X0155-27F>

South of Vet's Memorial on Tremont





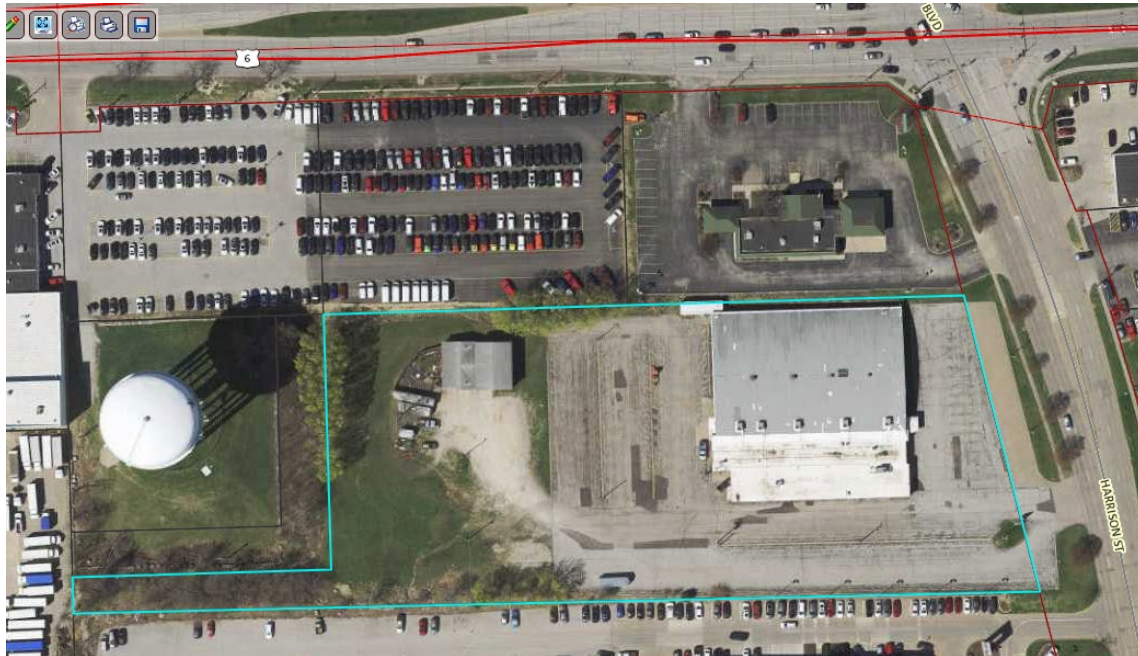
- 3812 Harrison: 4.35 Acres

Owner: Bowling Center, Inc (former 30 Lanes Bowling)

2021 Assessment: \$917,020 – Commercial

Key Commercial area?

<https://beacon.schneidercorp.com/Application.aspx?AppID=1024&LayerID=21532&PageTypeID=4&PageID=9191&Q=997263455&KeyValue=P1411-18A>



- Parcel S2907-03 & S2907-04: 2.74 Acres

Owners: Three Trusts

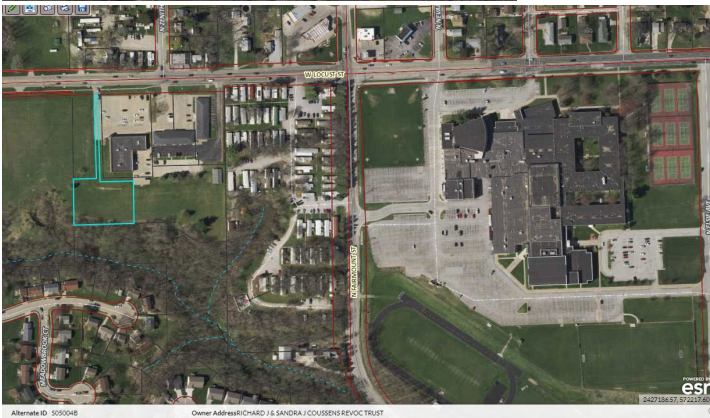
2021 Assessment: \$5,310 – Agriculture

2021 Assessment: \$34,730 – Agriculture

<https://beacon.schneidercorp.com/Application.aspx?AppID=1024&LayerID=21532&PageTypeID=4&PageID=9191&Q=1632120323&KeyValue=S2907-03>

<https://beacon.schneidercorp.com/Application.aspx?AppID=1024&LayerID=21532&PageTypeID=4&PageID=9191&KeyValue=S2907-04>

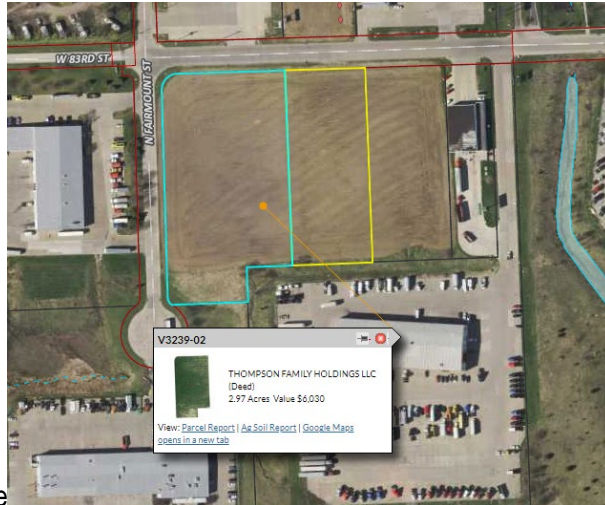
West of West High School



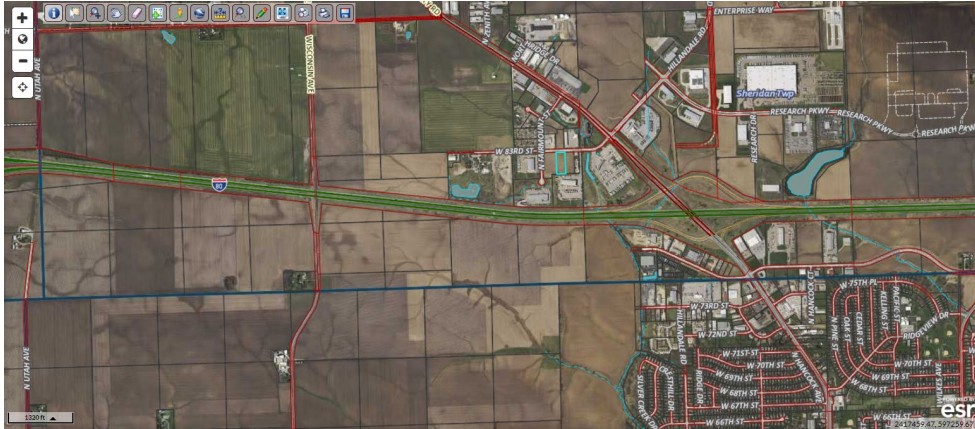
- Parcel V3239-02: 4.7 Acres total  
Owner: Thompson Family Holdings  
2021 Assessment: \$6,030 Agriculture  
2021 Assessment: \$3,620 Agriculture

<https://beacon.schneidercorp.com/Application.aspx?AppID=1024&LayerID=21532&PageTypeID=4&PageID=9191&Q=1610650381&KeyValue=V3239-02>

<https://beacon.schneidercorp.com/Application.aspx?AppID=1024&LayerID=21532&PageTypeID=4&PageID=9191&KeyValue=V3239-08>



West of NW Blvd and Hillandale





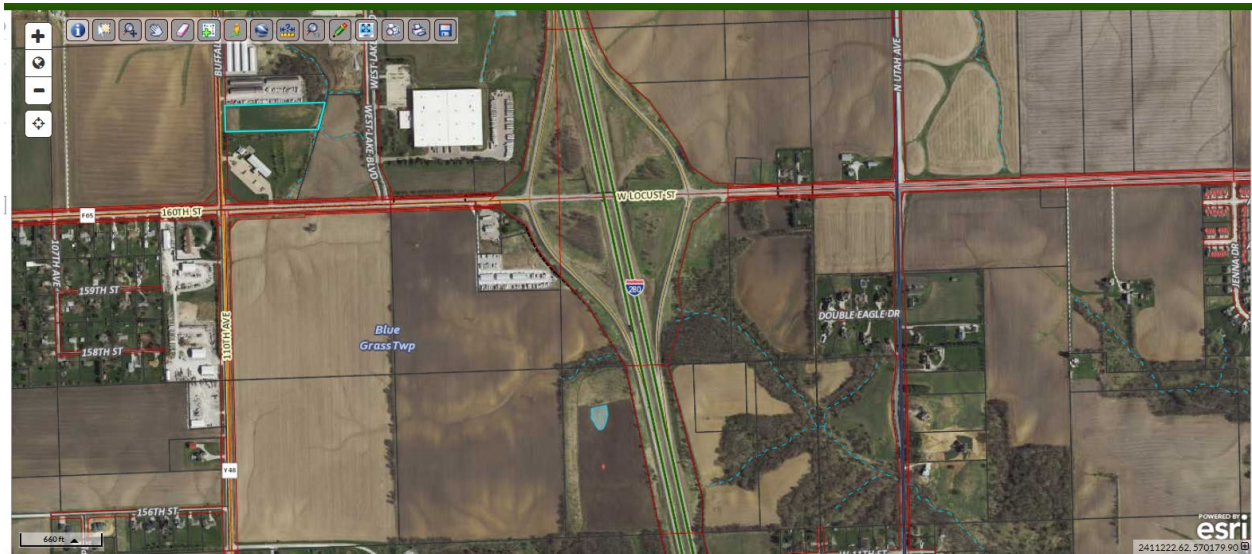
- Parcel T2449-02C: 3.5 Acres

Owner: New Life Southern Baptist Church

2021 Assessment: \$8,750 Commercial

<https://beacon.schneidercorp.com/Application.aspx?AppID=1024&LayerID=21532&PageTypeID=4&PageID=9191&KeyValue=T2449-02C>

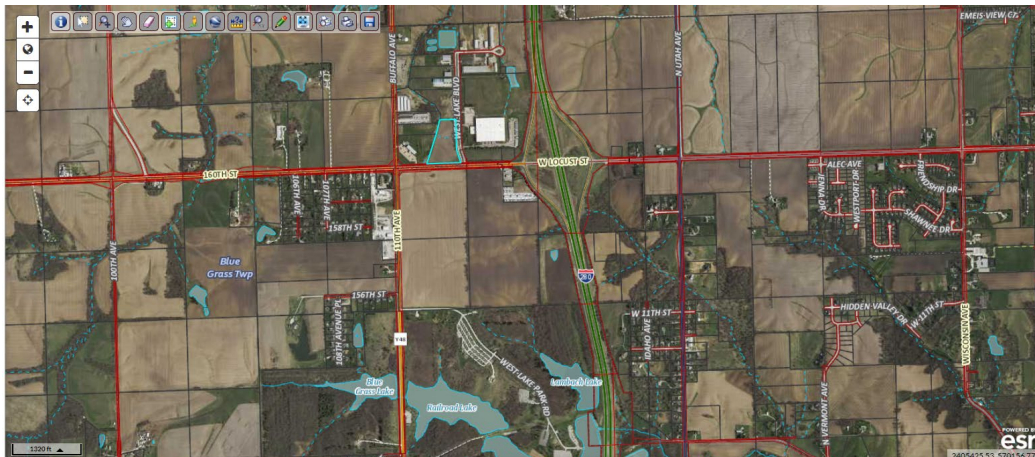
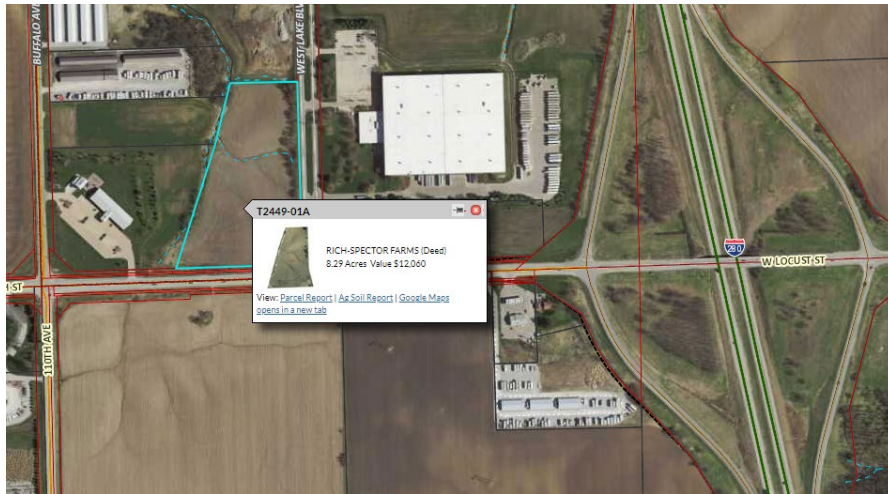
West of I-280 & Locust Street



- Parcel T2449-01A: 2.29 Acres  
Owner: Rich Spector Farms  
2021 Assessment: \$12,060 Agriculture  
Acreage size? Location to County Resources? Wastewater?

<https://beacon.schneidercorp.com/Application.aspx?AppID=1024&LayerID=21532&PageTypeID=4&PageID=9191&KeyValue=T2449-01A>

West of I-280 & Locust Street





- 4715 Tremont Ave: 4.59 Acres

Owner: Scott County Iowa

<https://beacon.schneidercorp.com/Application.aspx?AppID=1024&LayerID=21532&PageTypeID=4&PageID=9191&KeyValue=P1214-071>

