

To: Roger Kean, Conservation Director
Scott County Conservation

From: Greg Schaapveld, PE
Shive-Hattery, Inc.

Date: November 23, 2022

Subject: Scott County Park & West Lake Park Trail Master Plan

In 2022 Scott County Conservation embarked on a master planning exercise for an accessible off-road trail network in Scott County Park and West Lake Park, and selected Shive-Hattery, Inc. to facilitate the process. A kick-off meeting with County staff was held to better understand the desired outcomes.

Following the kick-off meeting, a base map of each park was prepared to detail existing conditions. Those maps included aerial photography, topographic (elevation) data, and park utility mapping. County staff reviewed the maps and provided additional information, particularly at West Lake Park, on any work that has occurred in recent years that wasn't captured in the base maps.

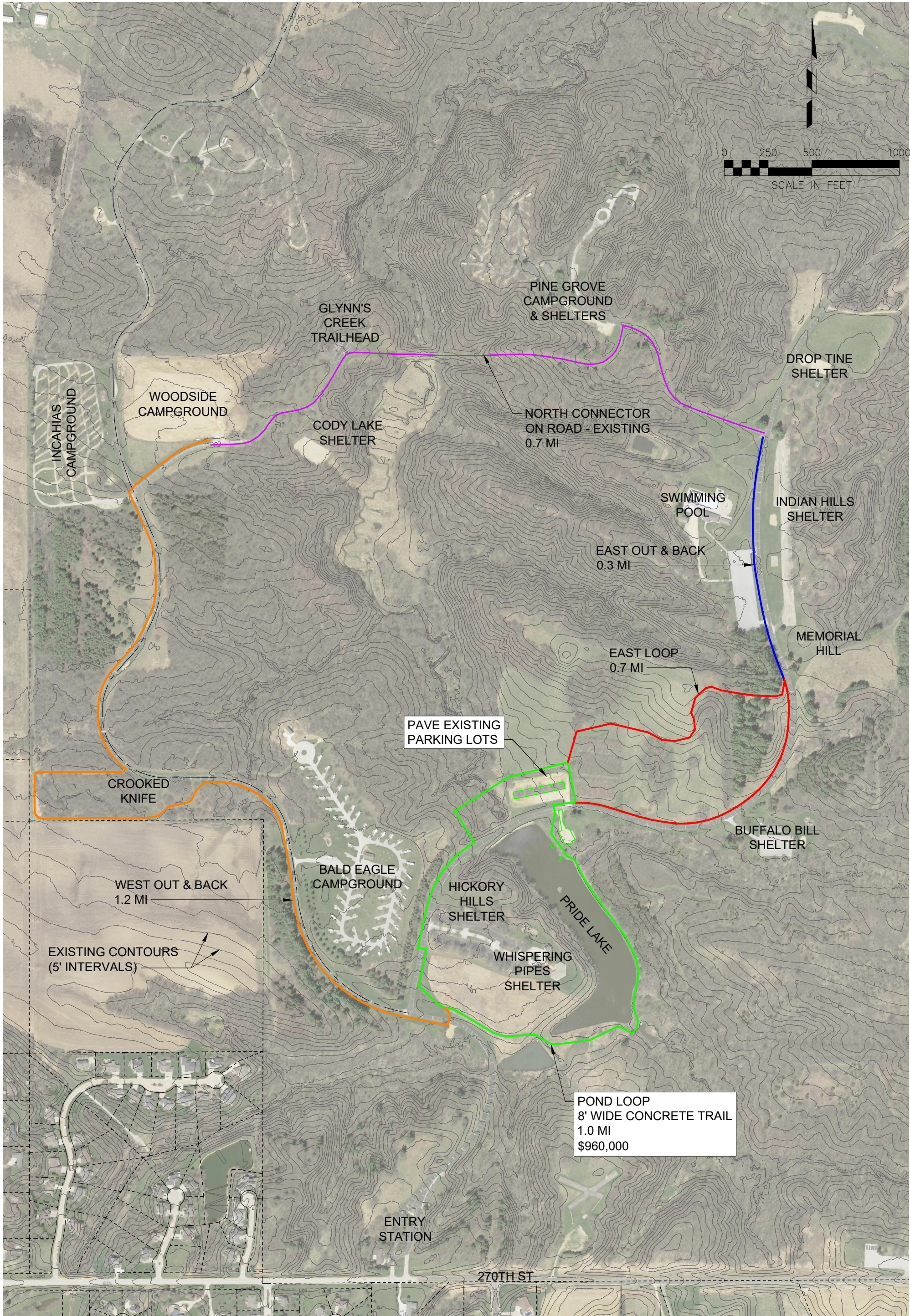
The next step involved reviewing the existing park amenities, road networks, trail networks, and existing topography to identify routes that would connect the various park amenities via terrain that is flat enough to meet accessibility requirements without conflicting with existing park features. Accessibility requirements limit the steepness of trails to 5% or less in the walking/traveling direction (1' rise over a 20' distance). An exception to that slope requirement is that when trails are added along existing roads, the trail slope may match the slope of the road regardless of the steepness of the road. For purposes of this study, trails were generally designed at 4% slopes to accommodate real-world deviations from the topographic information used herein.

After a tabletop review of those preliminary routes, County staff and Shive-Hattery personnel toured both parks to identify the various routes, noting challenges and possible alternative alignments. Revised routes were prepared, and a follow-up meeting with County staff and Shive-Hattery personnel yielded the attached master plan maps, including identification in green of priority projects in both parks. Project costs for those priority items are included on the maps, and include anticipated construction costs, 15% contingency, 15% design/construction administration/construction observation fees, and one year of 5% inflation (anticipated 2023 construction).

If you have any questions or comments please call me at 309-738-5879 or email me at gschaapveld@shive-hattery.com. Thank you!

Attachments: Scott County Park Trail Master Plan, West Lake Park Master Plan.





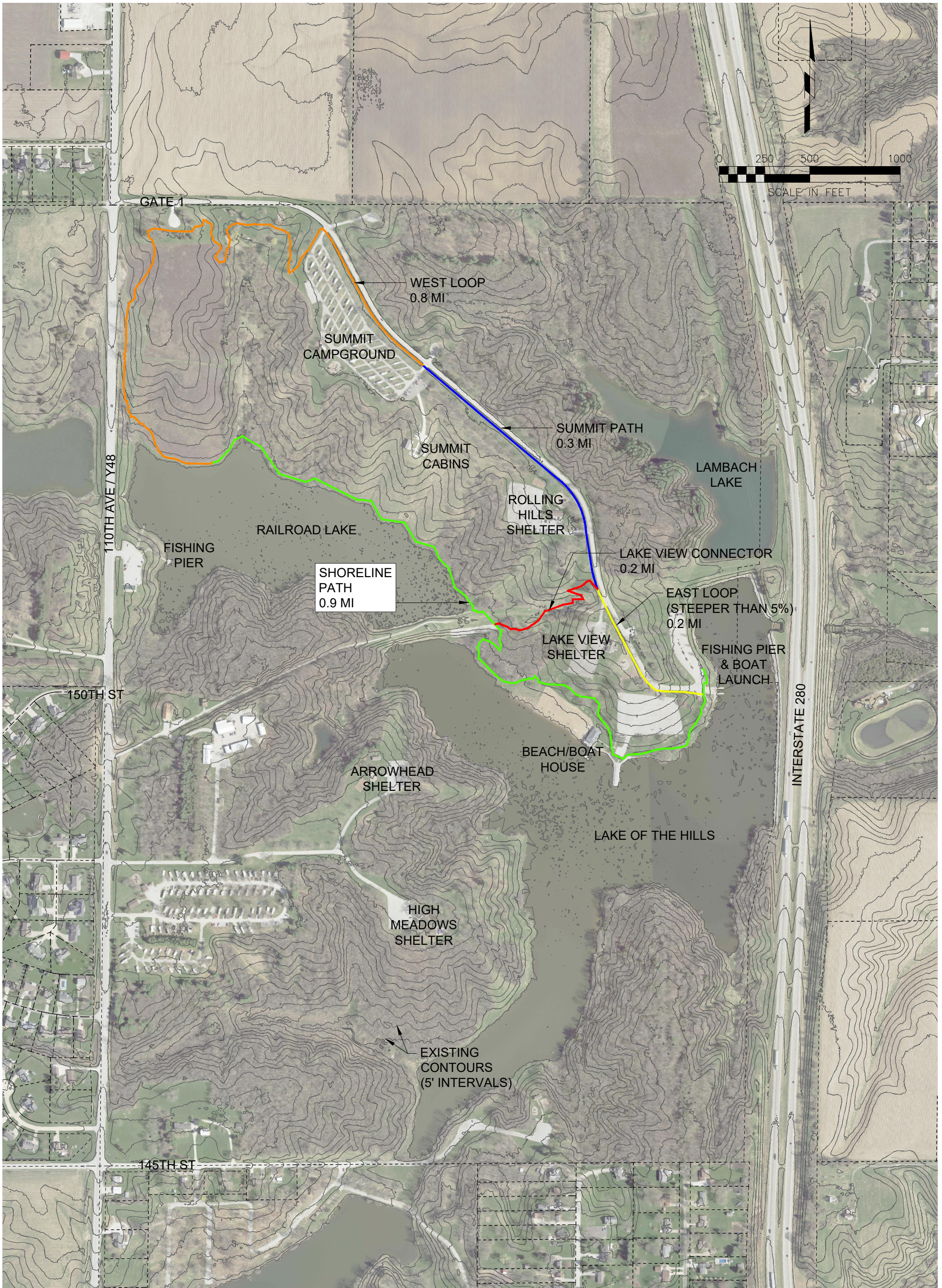
g:\projects\MO2132202550\Deliverables\Drawings\XREF\base-scott-co_2.dwg | 11/23/2022 3:05 PM

PHASE 1 (ITEMS IN GREEN)
 1.0 MI OF 8' WIDE CONCRETE TRAIL
 PAVED PARKING LOT, ACCESSIBLE FISHING PIER, CANOE/KAYAK
 LAUNCH @ PRIDE LAKE
 \$1,150,000

POND LOOP
 8' WIDE CONCRETE TRAIL
 1.0 MI
 \$960,000

SCOTT COUNTY PARK
TRAIL MASTER PLAN
 11/23/2022
 2132202550

OVERALL TRAIL LENGTH - ALL PHASES = 3.8 MI



PHASE 1 (ITEMS IN GREEN)
 0.9 MI OF 8' WIDE CONCRETE TRAIL
 \$1,000,000

OVERALL TRAIL LENGTH - ALL PHASES = 2.4 MI